

የፖርቱጋል ግንባታ ስራ ለግንባታ ስራ- የግንባታ ስራ ለግንባታ ስራ የግንባታ ስራ ለግንባታ ስራ ለግንባታ ስራ (2007-2011)



ግንባታ ስራ ለግንባታ ስራ ለግንባታ ስራ
ሰኔ 6-8, 2011, ግንባታ ስራ ለግንባታ ስራ
ግንባታ ስራ ለግንባታ ስራ ለግንባታ ስራ

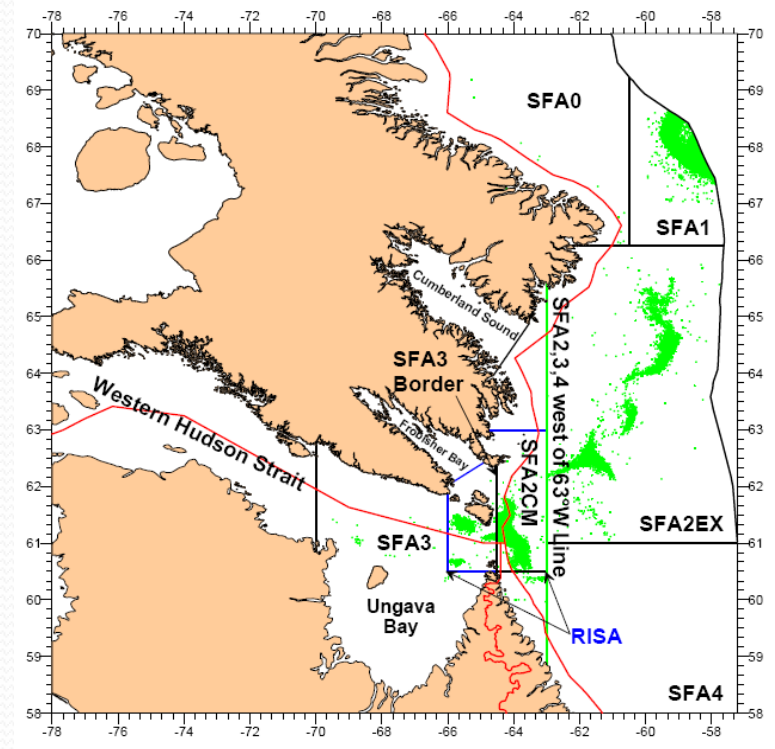
ግንባታ ስራ ለግንባታ ስራ ለግንባታ ስራ ለግንባታ ስራ

ርዕዮታችን

- ከጋራ ግንዛቤና ግንኙነት ጋር የሚያደግ ልማት (CSAS)
→ ግንዛቤና ግንኙነት ጋር የሚያደግ ልማት ለማሳካት ከጋራ
- ለሰላም ግንኙነት ልማት ማሳካት ለሚያስፈልጉት ግንኙነት (NAFO)
- ለሰላም ግንኙነት ልማት ማሳካት ለሚያስፈልጉት ልማት ማሳካት ለሚያስፈልጉት ልማት ማሳካት
 - ለሰላም ግንኙነት ልማት ማሳካት ለሚያስፈልጉት ልማት ማሳካት ለሚያስፈልጉት ልማት ማሳካት

የህጋዊ ምርመራ ለጊዜ ለሆኑ የህጋዊ ምርመራ ለጊዜ ለሆኑ ለጊዜ ለሆኑ ለጊዜ ለሆኑ
 → ለርኅብ ለርኅብ ለርኅብ ለርኅብ ለርኅብ ለርኅብ ለርኅብ ለርኅብ ለርኅብ ለርኅብ ለርኅብ ለርኅብ
 ለጊዜ ለሆኑ ለጊዜ ለሆኑ ለጊዜ ለሆኑ ለጊዜ ለሆኑ ለጊዜ ለሆኑ ለጊዜ ለሆኑ ለጊዜ ለሆኑ ለጊዜ ለሆኑ

2008



2011

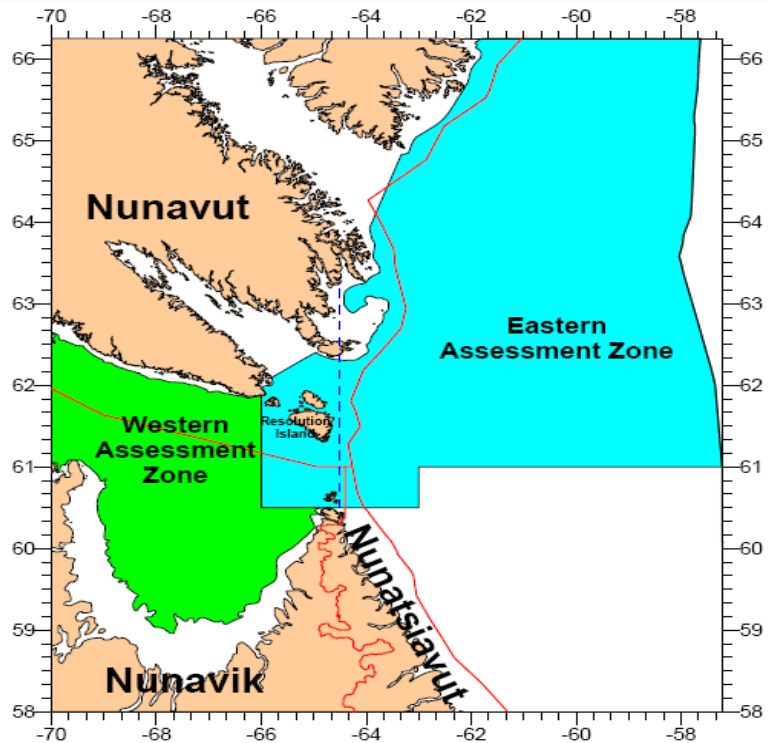


Figure 1. Map of Shrimp Fishing Areas and survey study areas in Hudson Strait and Ungava Bay, Davis Strait and Baffin Bay. Points are fishing locations from 1985-2009. Land claim boundaries are marked in red.

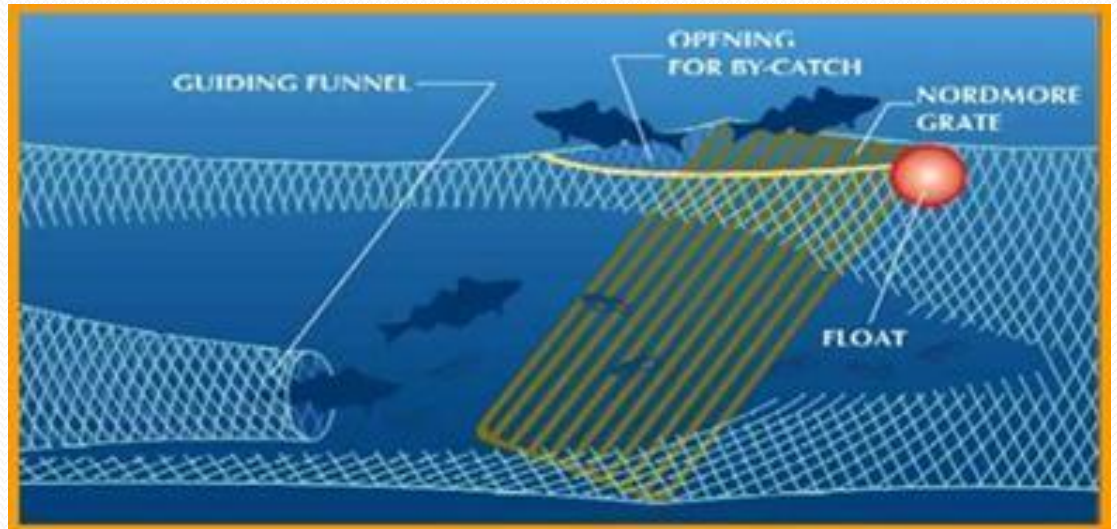
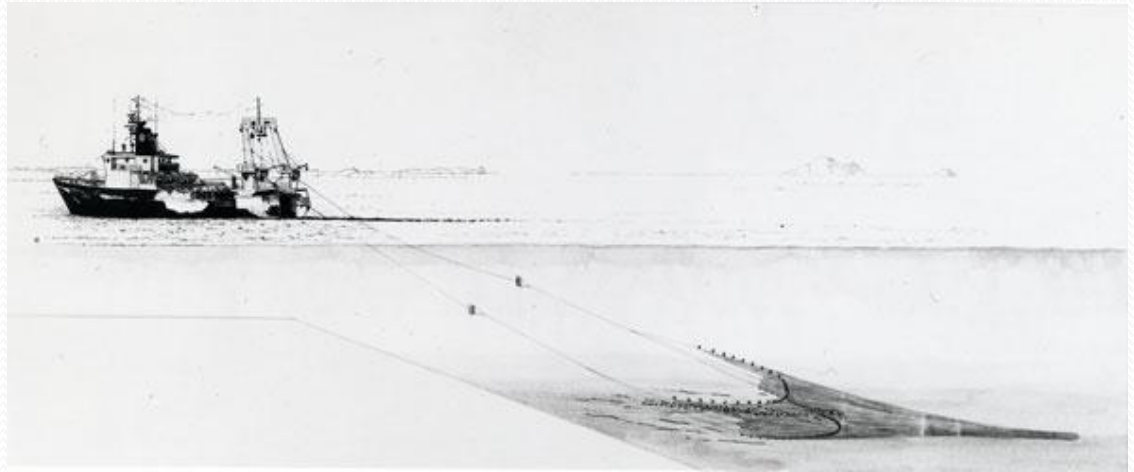
Figure 2 Eastern and Western assessment zones which underlay Shrimp Fishing Area 2 (east of blue dashed line) and 3 (west of blue dashed line). Boundaries of the Nunavut, Nunavik and Nunatsiavut land claims are shown in red.

የሚገኝበት - ስራ ለጋራ ጥራትና ጥራት ምዕራፍ

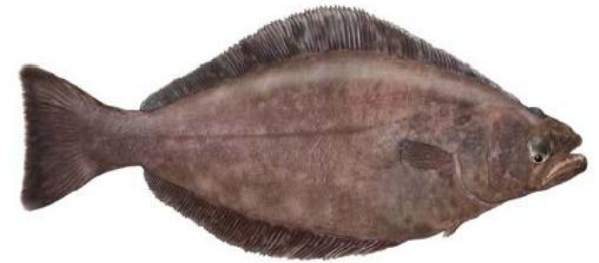
- የሚገኝበት 0 ለብሉ ለሚሰጠው ስራ ለጋራ
 - ለጋራ ስራ ለጋራ ስራ ለጋራ
- የሚገኝበት 2 ለብሉ ስራ ለጋራ ስራ ለጋራ
 - ስራ ለጋራ ስራ ለጋራ
 - ስራ ለጋራ ስራ ለጋራ
 - ስራ ለጋራ ስራ ለጋራ = 9% (ለጋራ ስራ ስራ ስራ = 14%)
 - ስራ ለጋራ ስራ ለጋራ
 - ስራ ለጋራ ስራ ለጋራ ስራ ለጋራ ስራ ለጋራ
 - ስራ ለጋራ ስራ ለጋራ ስራ ለጋራ ስራ ለጋራ = 5% (ለጋራ ስራ ስራ ስራ = 56-89%)
- የሚገኝበት 3
 - ስራ ለጋራ ስራ ለጋራ ስራ ለጋራ ስራ ለጋራ ስራ ለጋራ

ለኔግቲቭ ስርዓት ምህንድስና ልማት 0-3 (1979-2009)

- Nordmore ምህንድስና (1993) ለግብርና ልማት ስርዓት ልማት
- ለግብርና: ምህንድስና ልማት ልማት ልማት ልማት
- ለግብርና: ምህንድስና ልማት 0 (69%) (ምህንድስና)
- ለግብርና: ምህንድስና ልማት 2 (1.7%)
- ለግብርና: ምህንድስና ልማት 1 ልማት 3 (3.5%, 4.2%)



ፍጥናት



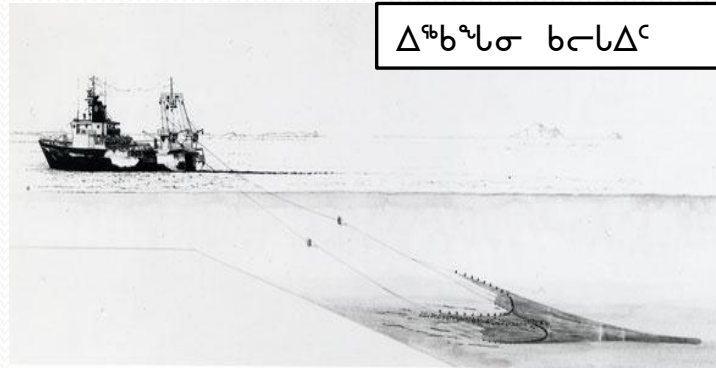
Bonnie Ross, Ross Illustrations

- ኢንፎርሜሽን ልዩጋል፣ ኮሌጅ/ዩኒቨርሲቲ/ሥራተኛ
- ማህተም ልማት/ጥራት ማረጋገጫ፣ ልዩጋት ልማት፣ ሥነ-ምግባር (ፍልጋት ልማት ልማት)
- ለጥናት/ጥናት/ጥናት ልማት ልማት ልማት ልማት ልማት
- ከፍተኛ-ከፍተኛ ልማት ልማት ልማት ልማት 1981

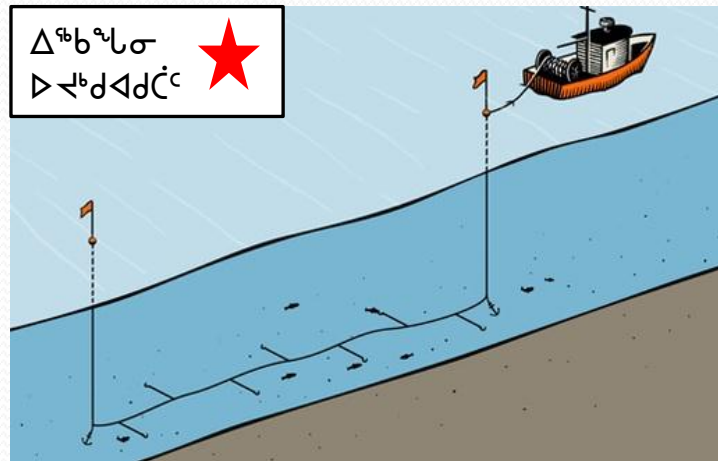
ገጽ ፩ ስርዓተ ግብርና - ገጽ ፩

ግብርና ስርዓተ ግብርና

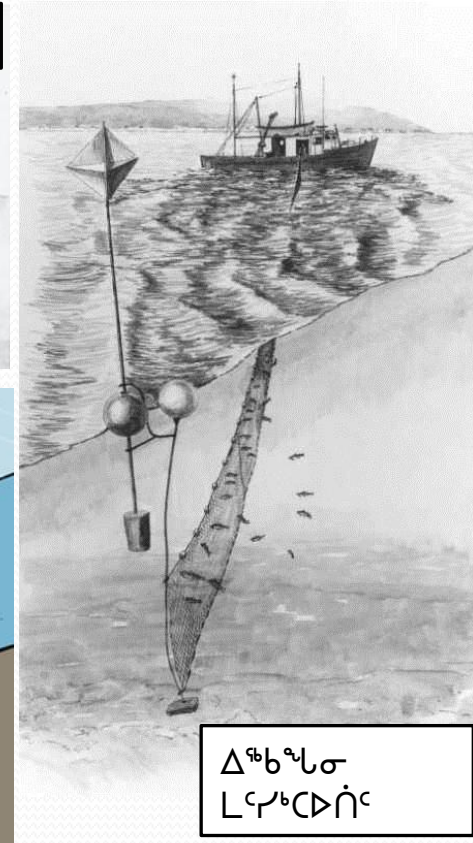
- ግብርና ስርዓተ ግብርና
- ግብርና ስርዓተ ግብርና
 - ግብርና ስርዓተ ግብርና
 - ግብርና ስርዓተ ግብርና
 - ግብርና ስርዓተ ግብርና
 - ግብርና ስርዓተ ግብርና
 - ግብርና ስርዓተ ግብርና
 - ግብርና ስርዓተ ግብርና



ግብርና ስርዓተ ግብርና



ግብርና ስርዓተ ግብርና ★



ግብርና ስርዓተ ግብርና

የሚገኝ ግጥም





ᖃᑦᑦᑦᑦᑦ - ᐱᑭᑦᑦᑦᑦᑦ ᐱᑦᑦᑦᑦᑦ ᐱᑦᑦᑦᑦᑦᑦᑦ

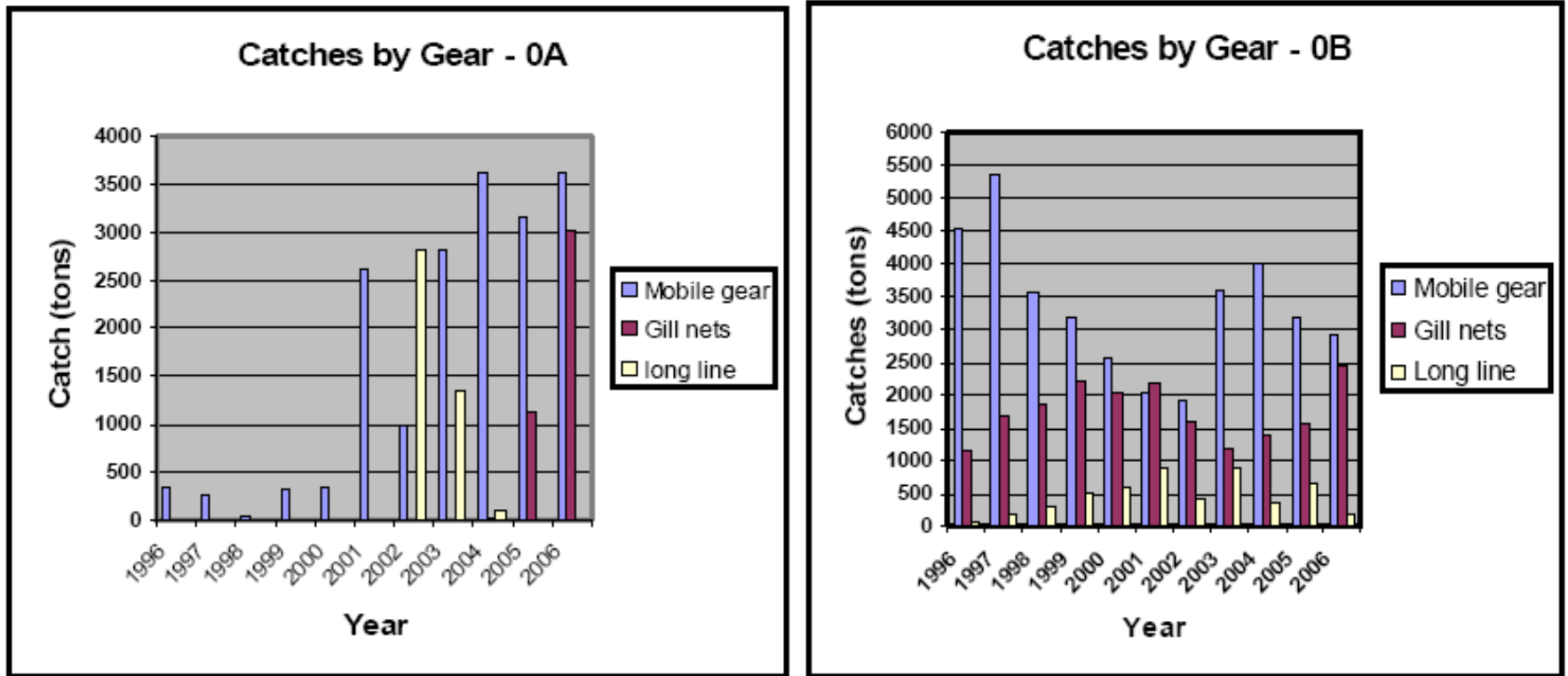


Figure 3. Subarea 0 Greenland halibut catches by gear type (1996-2005).
 * Data for catches by gear type in 0B from 1996 to 1999 may contain inaccuracies.

ᐱᑦᑦᑦᑦᑦ ᐱᑦᑦᑦᑦᑦ ᐱᑦᑦᑦᑦᑦᑦᑦ ᖃᑦᑦᑦᑦᑦᑦ ᐱᑦᑦᑦᑦᑦᑦᑦᑦ ᐱᑦᑦᑦᑦᑦᑦᑦᑦᑦ 2006-2008 (NAFO ᐱᑦᑦᑦᑦᑦ)

ግጥሙና ስርዓቱ NAFO - ስፔሻላይዥን

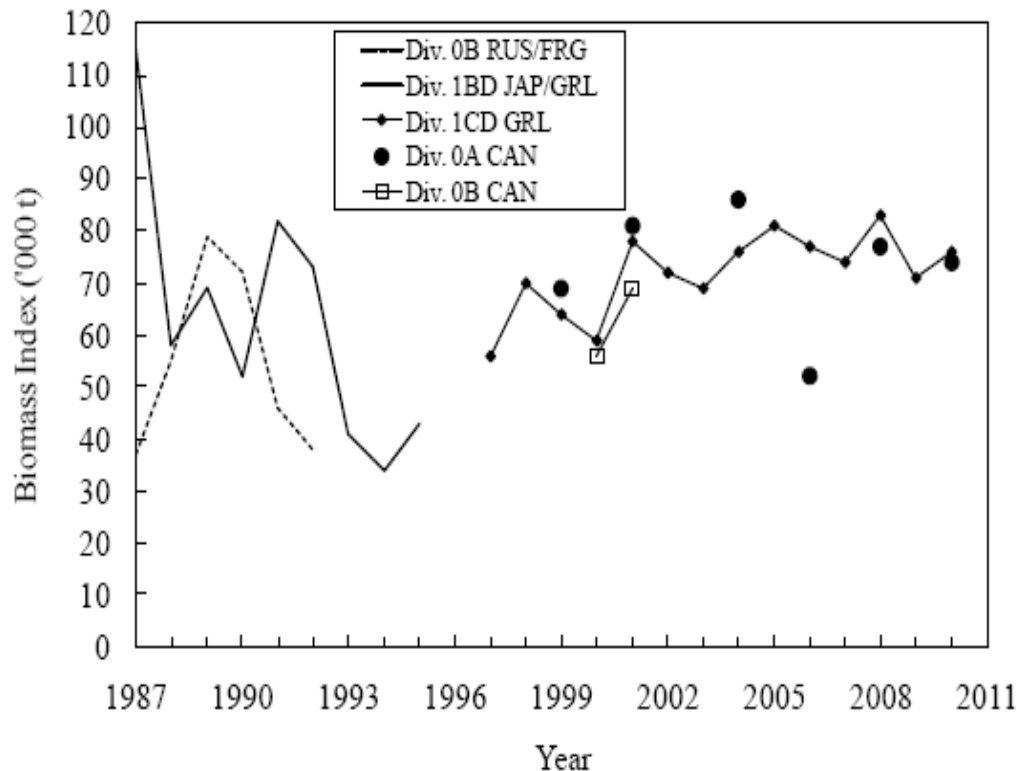


Fig. 1.3. Greenland halibut in Subareas 0+1 (excluding Div. 1A inshore): biomass estimates from bottom trawl surveys. Note, incomplete coverage of the 2006 survey in Div. 0A and that survey estimates from Div. 0A does not include surveys in the northern part in 2004 and 2010. Further, the survey estimates from Div. 1A in 2001, 2004 and 2010 are not included.

ᐅᐅᐅᐅ NAFO - ᐅᐅᐅᐅᐅᐅᐅ

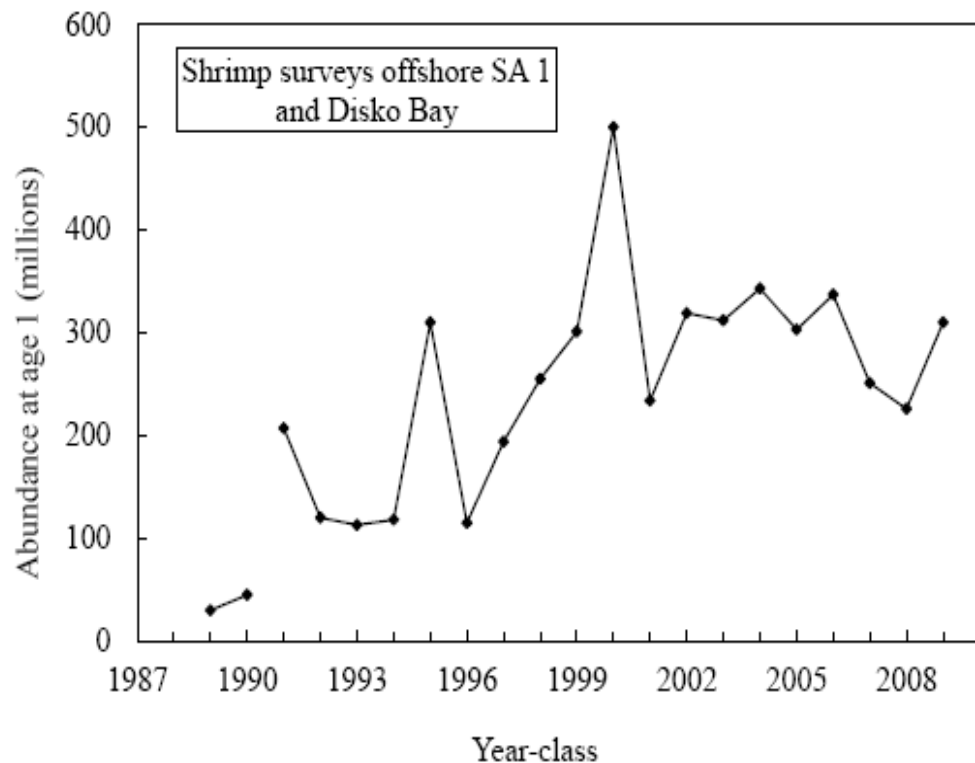


Fig. 1.4. Greenland halibut in Subareas 0+1: recruitment index at age 1 in Subarea 1 derived from the Greenland shrimp trawl surveys. Note that the survey coverage was not complete in 1990 and 1991 (the 1989 and 1990 year-classes are poorly estimated as age 1).