

SUBMISSION TO THE
NUNAVUT WILDLIFE MANAGEMENT BOARD AND NUNAVIK MARINE
REGION WILDLIFE BOARD

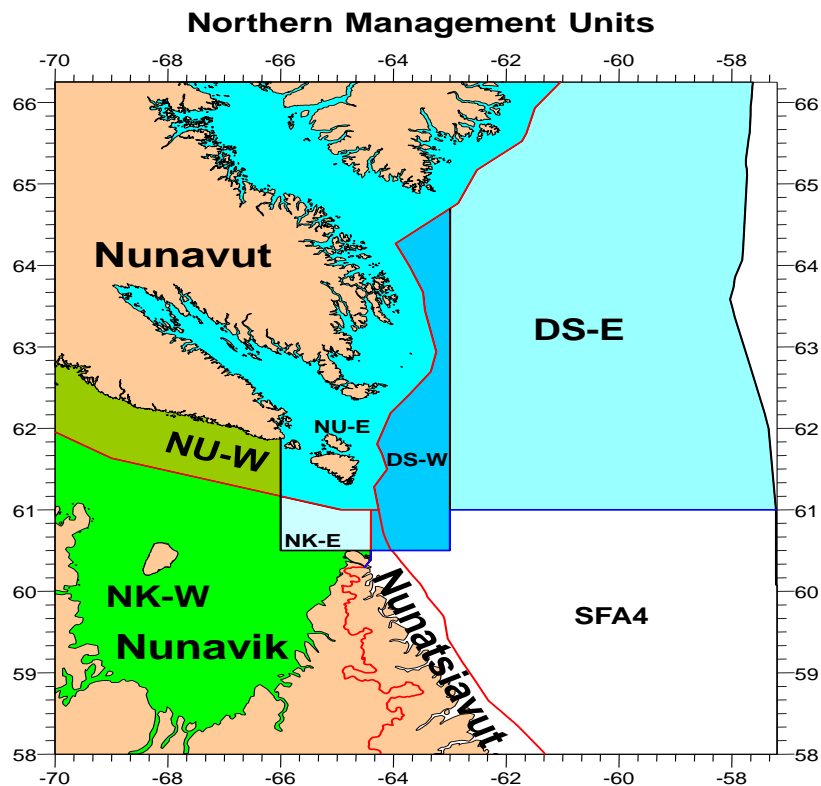
FOR

Information:

Decision: X

Recommendation: X

Issue: Season Bridging Pilot Project for Nunavut and Nunavik allocations in the Northern shrimp fishery from 2018/19 – 2020/21 seasons



Map:

Blue areas – Eastern Assessment Zone

Green areas – Western Assessment Zone

Background

Two shrimp species (*Pandalus Montagu* and *Pandalus Borealis*) occur in the Northern shrimp fishery that takes place in the Davis Strait and eastern Hudson Strait which includes parts of the Nunavut Settlement Area (NSA) and the Nunavik Marine Region (NMR). Total Allowable Catch (TAC) for each species is set for two distinct science assessment zones (East and West), then distributed into management units as per defined sharing arrangements.

Season Bridging

Collectively, season bridging refers to 1) borrowing from the following year's quota to be fished in the last month of the current year; and 2) the ability to carry forward some of the current year's unused quota to be caught in the following year.

Season bridging currently applies to the offshore sector in Davis Strait and SFAs 4 – 5 when the stock is in the Healthy Zone. Should there be a conservation concern in a particular Shrimp Fishing Area (SFA) as evidenced by its positioning in the Cautious or Critical zones, amounts may be capped or suspended in that SFA.

Proposal

Based on requests from industry, the Department is seeking decisions from the Boards on allowing season bridging for Nunavut and Nunavik Montagu allocations in the Western Assessment Zone (WAZ), and recommendations on season bridging for Borealis in Davis Strait for a two year pilot project (2018/19 – 2020/21). At that time, the Department will return to industry and the Boards for input, and decisions and recommendations, respectively.

The Department met with affected Nunavut and Nunavik industry and stakeholders in January 2018, and a follow up conference call was held in April to discuss the pilot proposal. Industry participants unanimously agreed to the proposal as described below.

Nunavut Considerations

Nunavut quotas are generally sub allocated at various percent shares to some or all of four Nunavut based entities. Some suballocations are transferred to other suballocation holders to be fished due.

Considering that Nunavut suballocates it's allocations to various entities, the Department proposes that:

- 1) carried forward amounts will accompany suballocations proportionately
- 2) transfers of quotas include carry forward amounts
- 3) carried forward quota will be available exclusively to the suballocation holder that made the carry forward request. Quota that is allocated in one year and carried forward and caught in the following year remains the previous year's allocations, and has already been subject to the Board and Ministerial decision processes.
- 4) borrowing will only be permitted if suballocation decisions have been made for the following year.

The Western Assessment Zone Montagu – For Decision

The Department is seeking a decision from the Boards on allowing season bridging of Montagu. There is no Precautionary Approach (PA) for this stock and the most recent science represents the 4th data point in the time series. When the pilot project is reviewed in 2020/21, Science will have collected the full number of data points and a PA framework will likely have been implemented, which would inform stock trends and health (i.e. Healthy, Cautious or Critical Zone).

Carry Forward

The Department will make 800t available in the WAZ for carry forward to Nunavut and Nunavik allocation holders annually; sharing of this amount will be consistent with the

sharing arrangement established by the Boards. Currently, based on the 50/50 split, Nunavut and Nunavik will each be able to bridge a total of 400t each. Any carry forward quota not caught by September 30 of the following year will remain unfished.

Borrowing

Nunavut and Nunavik shall share a total of 550t annually for borrowing based on sharing arrangements established by the Boards, which is currently 275t each. Requests to borrow quota will be assessed by the Department on a case by case basis in consideration of ice and climate conditions. Borrowed quota that is successfully fished will be deducted from that entity's allocation the following year, while unharvested quota will be returned.

The Eastern Assessment Zone – Davis Strait Borealis – For Recommendation

The Borealis stock in the EAZ is in the Healthy Zone of the PA Framework.

In the Nunavut East (NUE) and Nunavik East (NKE) management units, Borealis is caught as bycatch. Season bridging provisions in the EAZ apply only to the Davis Strait management units, where Borealis is the directed fishery.

Nunavut and Nunavik's 2017/18 allocations in Davis Strait totaled 2,688t and 120t respectively. There are no sharing arrangements established among the Boards.

Carry Forward - Borealis Davis Strait

350t will be available for carry forward for Nunavut and 20t for Nunavik allocations, to be fished by July 31 of the following year. Quota that is not caught by this date will remain unfished.

Borrowing - Borealis Davis Strait

Nunavut and Nunavik entities shall be allowed to borrow a total of 225t and 10t respectively from their following year's allocations, to be fished in the last month (March) of the current fishery.

Summary of Request

The Department is seeking from the Board, for the 2018/19 fishery:

- 1) Decisions on a 2 year pilot project for season bridging of Montagu allocations as described above in the WAZ.
- 2) Recommendations on a 2 year season bridging pilot project for Borealis allocations in Davis Strait as described above.

Prepared by: Ecosystems and Fisheries Management, Fisheries and Oceans Canada

Date: April, 2018

Consultation Summary

Season Bridging in the Eastern and Western Assessment Zones for Nunavut and Nunavik Allocations

Face to Face meeting: Iqaluit, January 22, 2018

Participants:

- Brian Burke – Nunavut Fisheries Association
- Jerry Ward – Qikiqtaaluk Corporation
- Peter Rose – Makivik
- Patrick Martin – Baffin Fisheries Coalition
- Vicki Sahanatien – NWMB
- Jason Akearok – NWMB
- Sandra Courchesne – DFO
- Christi Horne – DFO
- Shelly Michie – DFO
- Allison McPhee – DFO
- Charlotte Sharkey – DFO

At the face to face meeting, the season bridging proposal was introduced to the group and discussed. After the meeting, the Department received questions from NFA and a subsequent conference call was held on April 3, 2018.

Participants in the April 3 call / discussion:

- Brian Burke – Nunavut Fisheries Association
- Jerry Ward – Qikiqtaaluk Corporation
- Peter Rose – Makivik
- Patrick Martin* – BFC
- Amber Giles – NWMB
- Mark Basterfield, NMRWB
- Leigh Edgar – DFO (Chair)
- Christi Horne – DFO
- Charlotte Sharkey – DFO
- Brian Lester – DFO

During this call, questions from industry were answered and rationales explained. Industry was consulted on several points regarding season bridging, including amounts available for carry forward and borrowing in each area as well as time limitations. All consultation points were agreed upon unanimously during the call and through a few follow up emails, and form the basis of the pilot project reflected in the Briefing Note to the Nunavut and Nunavik Boards on Season Bridging.

*Patrick Martin (Baffin Fisheries Coalition) was not on the call but was briefed in full via telephone immediately after and was part of the subsequent group email exchange. His views were sought on all decision points, with full agreement.

Prepared by: Ecosystems and Fisheries Management, Fisheries and Oceans Canada

Date: May 3, 2018