

ᐃᓗርᓃᑦ

| | |
|------------------------------|-----|
| ᐋᐅᓕᑦᑎᓗᓂᓃᑦᑭᓃᑦᑭᓗᑦ ᓇᐃᓇᑦᑭᑦᑭᑦᑭᑦ | i |
| ᐱᑦᐋᑦᓂᓃᑦᑭᓗᑦ | ii |
| ᐃᓗርᓃᑦ | iii |
| 1.0 ᐅᓂᓃᓃᑦ ᐱᓗᑦᑕ ᐋᑦᑭᓂᓂᑦᑭᑦᑭᑦᑭᓗᑦ | 4 |
| 2.0 ᑕᑦᑭᑦᑭᑦᑭᑦᑭᑦᑭᑦ ᐱᓗᑦᑕ | 4 |
| 2.1 ᓃᑎᑭᓂᑦ ᐋᑦᑭᓂᓂᑦᑭᑦᑭᑦᑭᓗᑦ | 4 |
| 3.0 ᐅᓂᓃᓃᑦᑭᑦᑭᑦᑭᑦᑭᑦᑭᑦ ᓄᓇᓕᓃᑎᑭᑦ | 5 |
| 3.1 ᑭᑦᑭᑦᑭᑦ | 5 |
| 3.2 ᑦᑭᑦᑭᑦᑭᑦᑭᑦᑭᑦᑭᑦ | 6 |
| 3.3 ᓕᓂᓂᓃᑦᑭᓃᑦ | 7 |
| 3.4 ᐃᑦᓃᓗᐃᑦ | 9 |
| 3.5 ᑭᓃᑭᑦᑭᑦ | 10 |
| 3.6 ᑦᓂᑦᑭᓃᑦ | 12 |
| 3.7 ᐃᓗᓕᓃᑦ | 14 |
| 3.8 ᐃᓃᐱᐋᑦᑭᑦᑭᓃᑦ | 15 |
| 3.9 ᑦᑎᑭᑭᑦᑭᑦ | 17 |
| 3.10 ᓃᑦᑭᑦᑭᑦᑭᑦᑭᑦᑭᑦ | 18 |
| 4.0 ᓇᐃᓇᑦᑭᑦᑭᑦᑭᓗᑦ | 19 |
| 5.0 ᐅᐃᑭᐋᑭᑦᑭᑦ 1 | 21 |

ᓇᓗᓇᐃᓗᐃᓂᓃᓐ



ᓂᓃ ᓇᓗᓂᓃ

John Ringrose

ᐃᓇᓗᓂᓃᓂᓃ ᓂᓗᓃᓂᓃᓂᓃ
ᓃᓃᓃᓂᓃᓂᓃ
ᐃᓃᓂᓃᓂᓃᓂᓃ
ᓂᓃᓂᓃ ᓗᓃᓗᓂᓃ

Regional Wildlife Biologist
Baffin Region
Department of Environment
Government of Nunavut

Aviktaviani Huradjanut Qauyihaiyi
Qiqiktaaluk
Avatliqiyitkut
Nunavut Kavamanga



P.O. Box/C.P. 400
Pond Inlet, NU X0A 0S0
867-899-7576

jringrose@gov.nu.ca

www.gov.nu.ca

ᓃᓂᓗᓂᓃᓂᓃᓂᓃ ᓂᓃᓂᓃᓂᓃ ᓂᓃᓂᓃ ᓂᓃᓂᓃᓂᓃᓂᓃ

ᓗᓃᓂᓃᓂᓃᓂᓃᓂᓃ ᓂᓃᓂᓃᓂᓃᓂᓃᓂᓃ ᓂᓃᓂᓃᓂᓃᓂᓃᓂᓃ

ᓂᓃᓂᓃᓂᓃᓂᓃᓂᓃᓂᓃ ᓂᓃᓂᓃᓂᓃᓂᓃᓂᓃ

ᓃᓂᓂᓃᓂᓃᓂᓃᓂᓃ ᓃᓂᓂᓃᓂᓃᓂᓃᓂᓃ ᓂᓃᓂᓃᓂᓃᓂᓃᓂᓃ ᓂᓃᓂᓃᓂᓃᓂᓃᓂᓃ

ᓂᓂᓂᓃᓂᓃᓂᓃᓂᓃ ᓃᓂᓂᓃᓂᓃᓂᓃᓂᓃ ᓂᓂᓂᓃᓂᓃᓂᓃᓂᓃ ᓂᓃᓂᓃᓂᓃᓂᓃᓂᓃ
ᓃᓂᓂᓃᓂᓃᓂᓃᓂᓃᓂᓃ ᓂᓂᓂᓃᓂᓃᓂᓃᓂᓃ ᓂᓂᓂᓃᓂᓃᓂᓃᓂᓃᓂᓃᓂᓃᓂᓃ
ᓂᓂᓂᓃᓂᓃᓂᓃᓂᓃᓂᓃᓂᓃ ᓂᓃᓂᓃᓂᓃᓂᓃᓂᓃ ᓂᓂᓂᓃᓂᓃᓂᓃᓂᓃᓂᓃ

ᓃᓃᓃᓂᓃᓂᓃᓂᓃᓂᓃ ᓂᓃᓂᓃᓂᓃᓂᓃᓂᓃ **ᓂᓂᓂᓃᓂᓃᓂᓃ** 2014-ᓂᓃ ᓂᓃᓂᓃᓂᓃᓂᓃᓂᓃ
ᓂᓂᓂᓃᓂᓃᓂᓃᓂᓃᓂᓃᓂᓃ

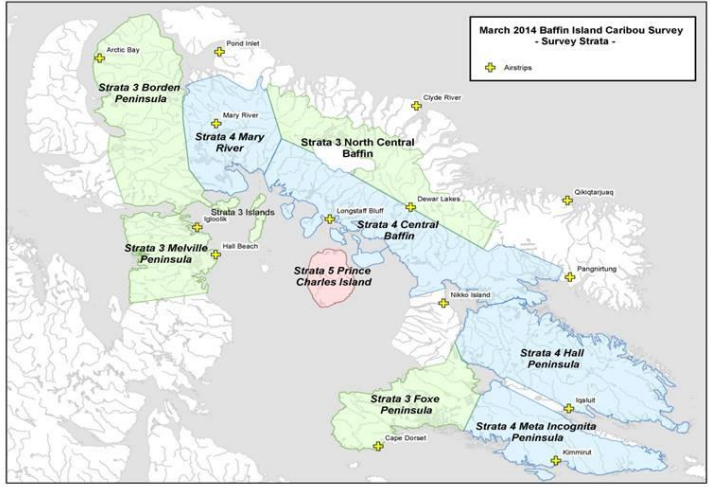
ᓃᓂᓂᓃᓂᓃᓂᓃᓂᓃᓂᓃ ᓃᓂᓂᓃᓂᓃᓂᓃᓂᓃᓂᓃᓂᓃ 2015 -2018.

ᓂᓃᓂᓃᓂᓃᓂᓃᓂᓃᓂᓃ ᓃᓂᓂᓃᓂᓃᓂᓃᓂᓃᓂᓃᓂᓃ ᓂᓂᓂᓃᓂᓃᓂᓃᓂᓃᓂᓃᓂᓃ
ᓂᓂᓂᓃᓂᓃᓂᓃᓂᓃᓂᓃᓂᓃ 2019-ᓂᓃ

ፍጠራ ለጥበቃ/ፍጥረት ለጥገና ስራዎች ስራዎች ስራዎች?

1) ስራዎች ስራዎች ስራዎች ስራዎች ስራዎች ስራዎች

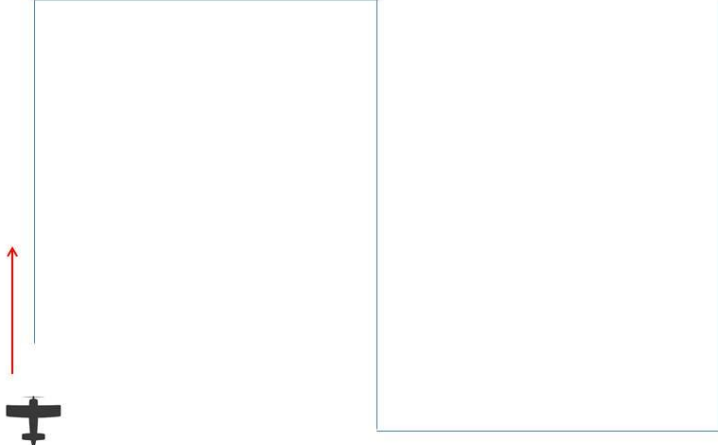
⚡
?
=
\$\$
+⌚



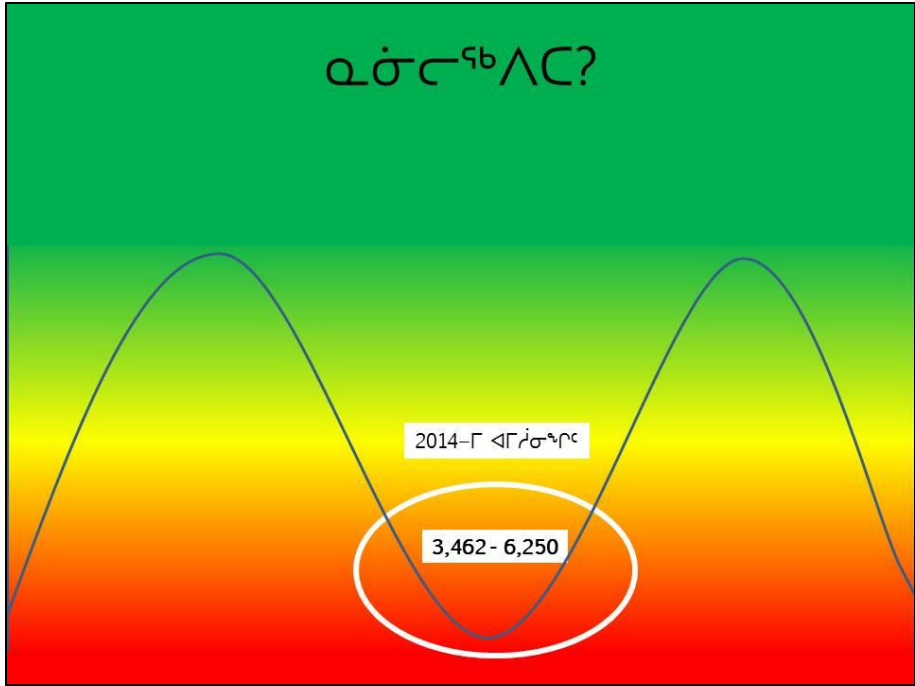
ፍጠራ ለጥበቃ/ፍጥረት ለጥገና ስራዎች ስራዎች ስራዎች?

2) ስራዎች ስራዎች ስራዎች ስራዎች ስራዎች ስራዎች

ጥገና ስራዎች



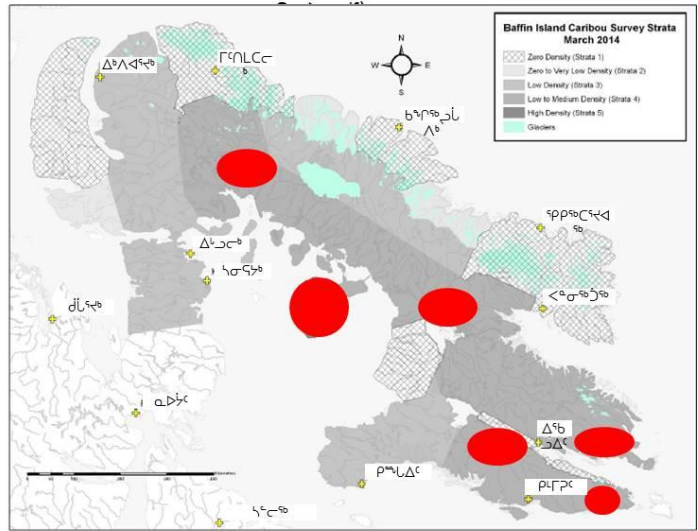
ዲስትሪቢዩሽን?



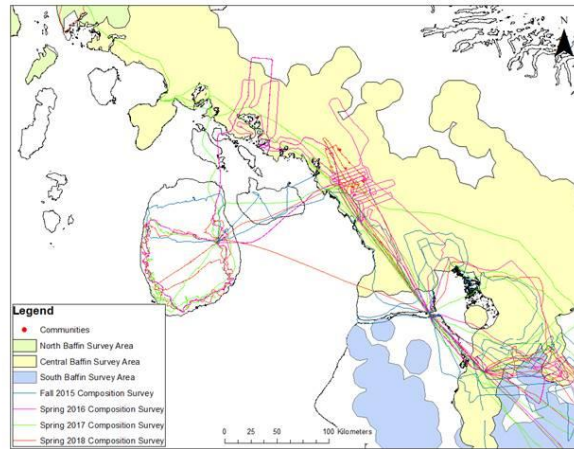
ጋኔጋል ስኬት/ሰላም ስኬት/ሰላም ስኬት/ሰላም (ፍገሎች) ስኬት/ሰላም ስኬት/ሰላም (ፍገሎች, ስኬት/ሰላም), ፍገሎች, ፍገሎች ስኬት/ሰላም?

ፍገሎች/ሰላም**

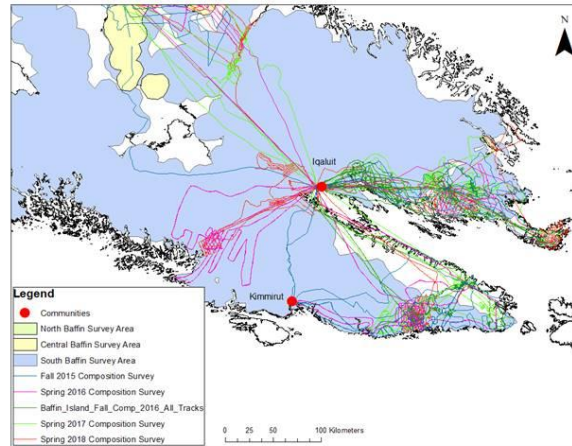
1) ስኬት/ሰላም ጋኔጋል ስኬት/ሰላም (ፍገሎች/ሰላም)



ᖃᓄᓂᓂᓂᓂᓂᓂ ᖃᓄᓂᓂᓂᓂᓂᓂ
ᖃᓄᓂᓂᓂᓂᓂᓂ ᖃᓄᓂᓂᓂᓂᓂᓂ



ᖃᓄᓂᓂᓂᓂᓂᓂ ᖃᓄᓂᓂᓂᓂᓂᓂ
ᖃᓄᓂᓂᓂᓂᓂᓂᓂ ᓂᓂᓂᓂ



የኔኮታርዮሎጂ ምርመራ የኔታርዮሎጂ ልዩ ልዩ ምርመራ
የኔታርዮሎጂ ልዩ ልዩ ምርመራ - ልዩ ልዩ ምርመራ

ጥቅም

Table 4 Number of observed caribou by demographic group during Baffin Island composition surveys 2015-2018.

| Year Season | 2015 | | | | 2016 | | | | 2016 | | | | 2017 | | | | 2017 | | | | 2018 | | | | | |
|---|---------------------|-----------------------|-----------------------|---------------------|---------------------|-----------------------|-----------------------|---------------------|---------------------|-----------------------|-----------------------|---------------------|---------------------|-----------------------|-----------------------|---------------------|---------------------|-----------------------|-----------------------|---------------------|---------------------|-----------------------|-----------------------|---------------------|-----|-----|
| | Fall | | Spring | | Fall | | Spring | | Fall | | Spring | | Fall | | Spring | | Fall | | Spring | | Fall | | Spring | | | |
| Location | North Baffin Island | Central Baffin Island | Prince Charles Island | South Baffin Island | North Baffin Island | Central Baffin Island | Prince Charles Island | South Baffin Island | North Baffin Island | Central Baffin Island | Prince Charles Island | South Baffin Island | North Baffin Island | Central Baffin Island | Prince Charles Island | South Baffin Island | North Baffin Island | Central Baffin Island | Prince Charles Island | South Baffin Island | North Baffin Island | Central Baffin Island | Prince Charles Island | South Baffin Island | | |
| Calves Observed | 55 | 28 | 133 | 49 | 23 | 82 | 49 | 54 | 81 | 47 | 1 | 114 | 92 | 86 | 21 | 18 | 31 | 155 | 36 | 33 | 161 | 401 | 58 | 55 | 19 | 39 |
| Cows Observed | 77 | 39 | 189 | 64 | 67 | 328 | 222 | 94 | 196 | 120 | 1 | 351 | 249 | 139 | 36 | 33 | 161 | 401 | 58 | 55 | 19 | 39 | 77 | 72 | 70 | 77 |
| Calves/100 Cows | 71 | 72 | 70 | 77 | 34 | 25 | 22 | 57 | 41 | 39 | 100 | 32 | 37 | 62 | 58 | 55 | 19 | 39 | 77 | 72 | 70 | 77 | 71 | 72 | 70 | 77 |
| Yearlings Observed | N/A | N/A | N/A | N/A | 10 | 76 | 29 | N/A | 42 | 23 | 0 | 57 | 75 | 17 | 5 | 7 | 37 | 100 | 5 | 7 | 37 | 100 | N/A | N/A | N/A | N/A |
| Bulls Observed | 76 | 29 | 126 | 46 | 25 | 204 | 151 | 54 | 126 | 64 | 6 | 133 | 181 | 74 | 38 | 40 | 73 | 277 | 76 | 29 | 126 | 46 | 25 | 204 | 151 | 54 |
| Bulls/100 Cows | 99 | 74 | 67 | 72 | 37 | 62 | 68 | 57 | 64 | 53 | 600 | 38 | 73 | 53 | 74 | 73 | 234 | 678 | 99 | 74 | 67 | 72 | 37 | 62 | 68 | 57 |
| Bull + Cows | 153 | 68 | 315 | 110 | 92 | 532 | 373 | 148 | 322 | 184 | 7 | 484 | 430 | 213 | 74 | 73 | 234 | 678 | 153 | 68 | 315 | 110 | 92 | 532 | 373 | 148 |
| Adults + Yearlings Observed | 153 | 68 | 315 | 110 | 102 | 608 | 402 | 148 | 364 | 207 | 7 | 541 | 505 | 230 | 79 | 80 | 271 | 778 | 153 | 68 | 315 | 110 | 102 | 608 | 402 | 148 |
| Total Observed (Calves, Yearlings and Adults) | 208 | 96 | 448 | 159 | 125 | 690 | 451 | 202 | 445 | 254 | 8 | 655 | 597 | 316 | 100 | 98 | 302 | 933 | 208 | 96 | 448 | 159 | 125 | 690 | 451 | 202 |



 40 ልዩ ልዩ ምርመራ : 100 ልዩ ልዩ ምርመራ 40 ልዩ ልዩ ምርመራ : 100 ልዩ ልዩ ምርመራ ? ልዩ ልዩ ምርመራ : 100 ልዩ ልዩ ምርመራ
 2015-፣ በ ስርዓት ልዩ ልዩ ምርመራ ልዩ ልዩ ምርመራ ልዩ ልዩ ምርመራ ልዩ ልዩ ምርመራ

የኔኮታርዮሎጂ ምርመራ የኔታርዮሎጂ ልዩ ልዩ ምርመራ
የኔታርዮሎጂ ልዩ ልዩ ምርመራ - ልዩ ልዩ ምርመራ

ጥቅም

Table 4 Number of observed caribou by demographic group during Baffin Island composition surveys 2015-2018.

| Year Season | 2015 | | | | 2016 | | | | 2016 | | | | 2017 | | | | 2017 | | | | 2018 | | | | | |
|---|---------------------|-----------------------|-----------------------|---------------------|---------------------|-----------------------|-----------------------|---------------------|---------------------|-----------------------|-----------------------|---------------------|---------------------|-----------------------|-----------------------|---------------------|---------------------|-----------------------|-----------------------|---------------------|---------------------|-----------------------|-----------------------|---------------------|-----|-----|
| | Fall | | Spring | | Fall | | Spring | | Fall | | Spring | | Fall | | Spring | | Fall | | Spring | | Fall | | Spring | | | |
| Location | North Baffin Island | Central Baffin Island | Prince Charles Island | South Baffin Island | North Baffin Island | Central Baffin Island | Prince Charles Island | South Baffin Island | North Baffin Island | Central Baffin Island | Prince Charles Island | South Baffin Island | North Baffin Island | Central Baffin Island | Prince Charles Island | South Baffin Island | North Baffin Island | Central Baffin Island | Prince Charles Island | South Baffin Island | North Baffin Island | Central Baffin Island | Prince Charles Island | South Baffin Island | | |
| Calves Observed | 55 | 28 | 133 | 49 | 23 | 82 | 49 | 54 | 81 | 47 | 1 | 114 | 92 | 86 | 21 | 18 | 31 | 155 | 36 | 33 | 161 | 401 | 58 | 55 | 19 | 39 |
| Cows Observed | 77 | 39 | 189 | 64 | 67 | 328 | 222 | 94 | 196 | 120 | 1 | 351 | 249 | 139 | 36 | 33 | 161 | 401 | 58 | 55 | 19 | 39 | 77 | 72 | 70 | 77 |
| Calves/100 Cows | 71 | 72 | 70 | 77 | 34 | 25 | 22 | 57 | 41 | 39 | 100 | 32 | 37 | 62 | 58 | 55 | 19 | 39 | 77 | 72 | 70 | 77 | 71 | 72 | 70 | 77 |
| Yearlings Observed | N/A | N/A | N/A | N/A | 10 | 76 | 29 | N/A | 42 | 23 | 0 | 57 | 75 | 17 | 5 | 7 | 37 | 100 | 5 | 7 | 37 | 100 | N/A | N/A | N/A | N/A |
| Bulls Observed | 76 | 29 | 126 | 46 | 25 | 204 | 151 | 54 | 126 | 64 | 6 | 133 | 181 | 74 | 38 | 40 | 73 | 277 | 76 | 29 | 126 | 46 | 25 | 204 | 151 | 54 |
| Bulls/100 Cows | 99 | 74 | 67 | 72 | 37 | 62 | 68 | 57 | 64 | 53 | 600 | 38 | 73 | 53 | 74 | 73 | 234 | 678 | 99 | 74 | 67 | 72 | 37 | 62 | 68 | 57 |
| Bull + Cows | 153 | 68 | 315 | 110 | 92 | 532 | 373 | 148 | 322 | 184 | 7 | 484 | 430 | 213 | 74 | 73 | 234 | 678 | 153 | 68 | 315 | 110 | 92 | 532 | 373 | 148 |
| Adults + Yearlings Observed | 153 | 68 | 315 | 110 | 102 | 608 | 402 | 148 | 364 | 207 | 7 | 541 | 505 | 230 | 79 | 80 | 271 | 778 | 153 | 68 | 315 | 110 | 102 | 608 | 402 | 148 |
| Total Observed (Calves, Yearlings and Adults) | 208 | 96 | 448 | 159 | 125 | 690 | 451 | 202 | 445 | 254 | 8 | 655 | 597 | 316 | 100 | 98 | 302 | 933 | 208 | 96 | 448 | 159 | 125 | 690 | 451 | 202 |


 30-፣ 50-፣ 100 ልዩ ልዩ ምርመራ : 100 ልዩ ልዩ ምርመራ 30-፣ 50-፣ 100 ልዩ ልዩ ምርመራ : 100 ልዩ ልዩ ምርመራ 30-፣ 50-፣ 100 ልዩ ልዩ ምርመራ : 100 ልዩ ልዩ ምርመራ
 በ ስርዓት ልዩ ልዩ ምርመራ ልዩ ልዩ ምርመራ ልዩ ልዩ ምርመራ ልዩ ልዩ ምርመራ

ፍጹም ልማት ሚኒስቴር ፍጹም ልማት ፎንድ
2019-፲ ልማት ፎንድ

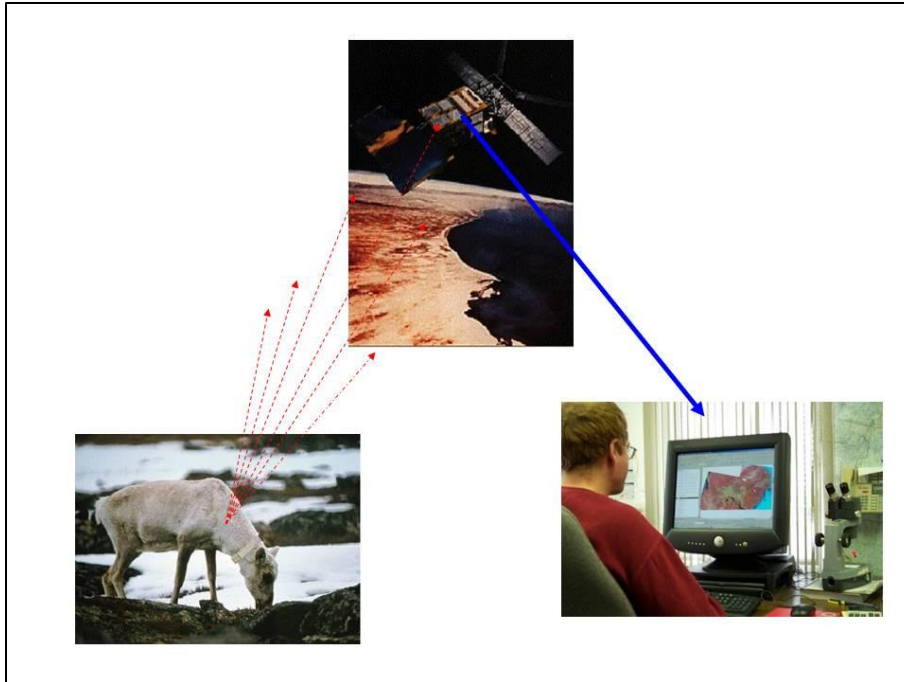
፲፱፻፲፱ ልማት ፎንድ ልማት ፎንድ ልማት ፎንድ ልማት ፎንድ
ፍጹም ልማት ፎንድ ፲፱፻፲፱ ልማት ፎንድ

ፍጹም ልማት ፎንድ ፍጹም ልማት ፎንድ ፍጹም ልማት ፎንድ

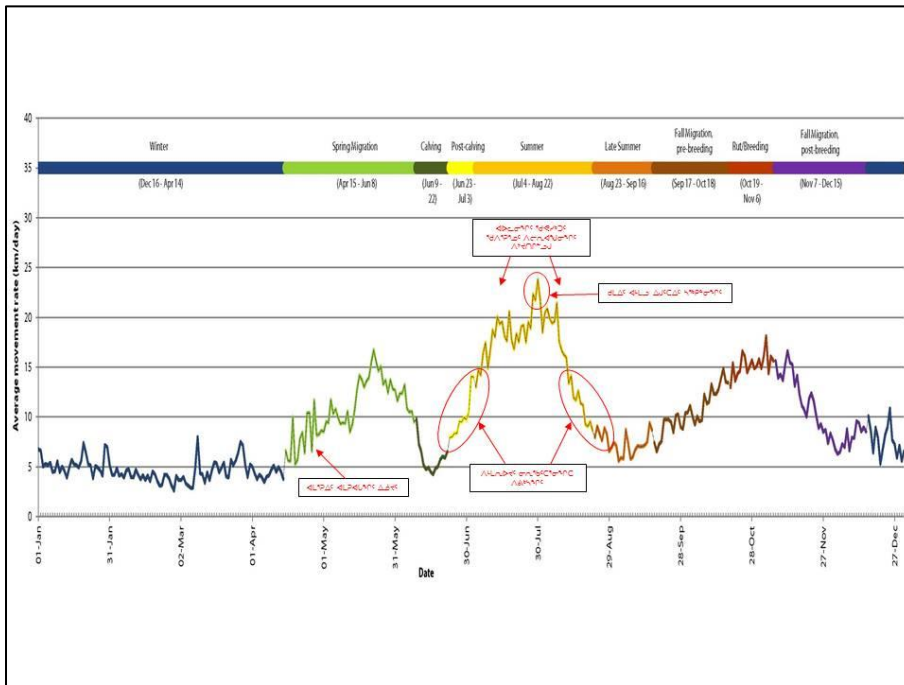
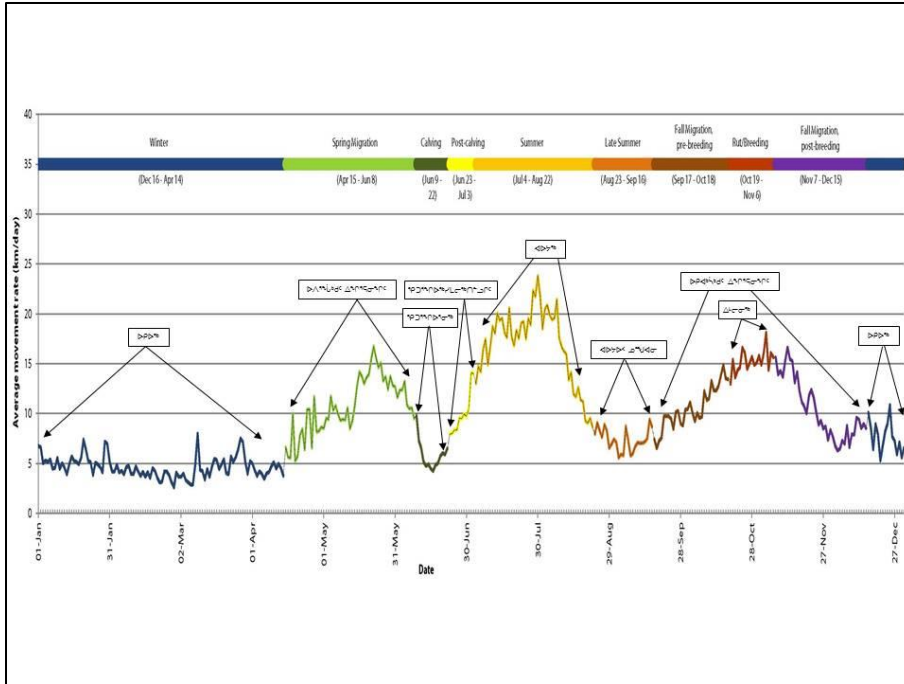
ፍጹም ልማት ፎንድ ፍጹም ልማት ፎንድ ፍጹም ልማት ፎንድ
ፍጹም ልማት ፎንድ ፍጹም ልማት ፎንድ ፍጹም ልማት ፎንድ

ፍጹም ልማት ፎንድ ፍጹም ልማት ፎንድ
ፍጹም ልማት ፎንድ

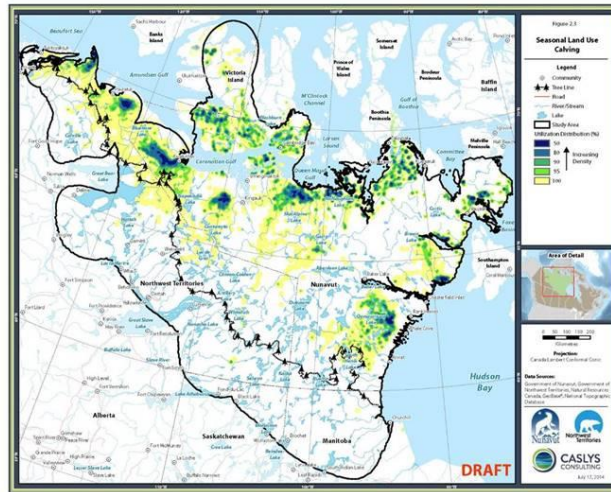
- ፍጹም ልማት ፎንድ ፍጹም ልማት ፎንድ



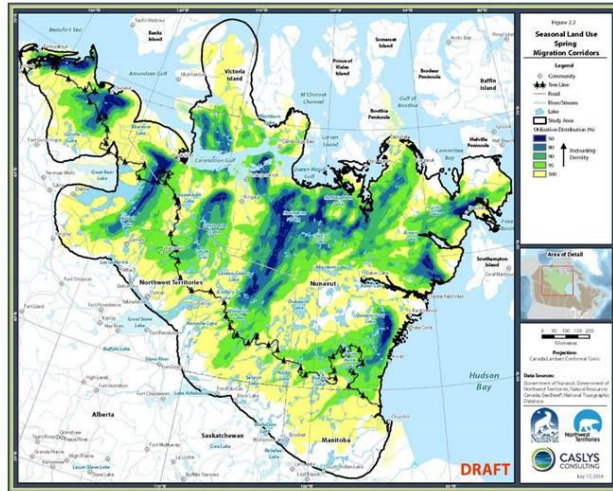
ፍጅጃጅ ማረጋገጫ ለግብርና ምርመራ



ደብዳቤ ስራ ለጥንታዊ ገንጠላ ልማት

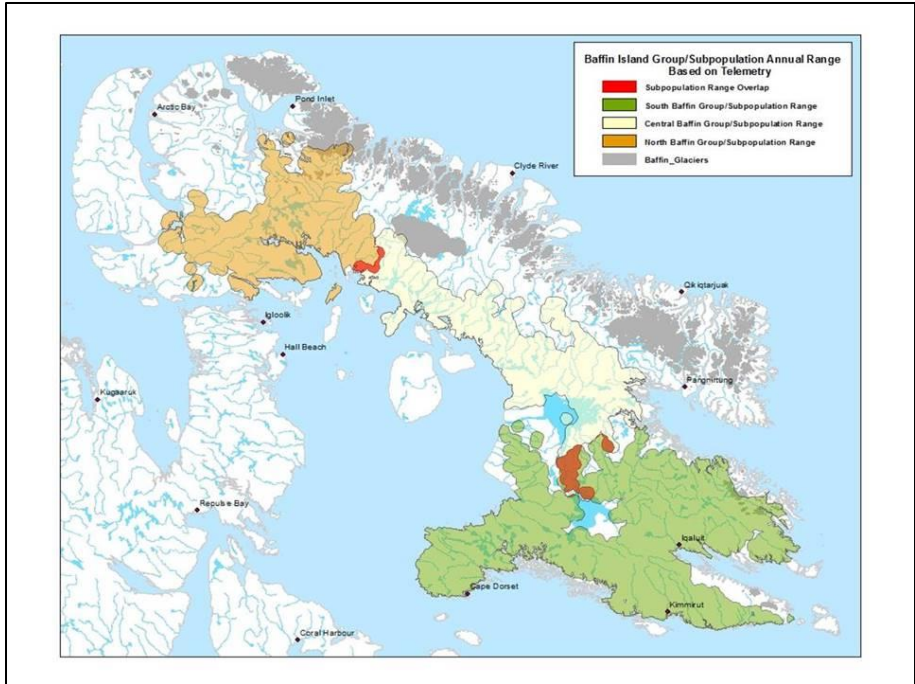


ደብዳቤ ስራ ለጥንታዊ ልማት - ጥንታዊ ስራ



ᓄᓇᓂᓄᓐ ᐱᐅᓂᓂᓄᓐ ᐱᓂᓂᓂᓄᓐ ᐱᓂᓂᓂᓄᓐ - ᐱᓂᓂᓂᓄᓐ ᐱᓂᓂᓂᓄᓐ

ᐅᓂᓂᓂᓄᓐ ᐱᓂᓂᓂᓄᓐ ᐱᓂᓂᓂᓄᓐ ᐱᓂᓂᓂᓄᓐ



ዕድረ ስብረት ናይ ስብረት



የጋራ ማኅበራዊ የኮሌጅ ግድግዳ

