



# 2020

ᐅᐅᐅᐅᐅᐅᐅᐅ ᐅᐅᐅᐅᐅᐅᐅᐅ ᐅᐅᐅᐅᐅᐅᐅᐅ  
ᐅᐅᐅᐅᐅᐅᐅᐅᐅ ᐅᐅᐅᐅᐅᐅᐅᐅᐅ













ቤጋንላይንግ ንጉሳዊ ፈላጊነታትን ለማረጋገጥ ለሌሎችም ማህበራዊ ጠቃሚ የሆኑ አሰጣጥ አገልግሎቶችን ለማስፈጸም ማድረግ ይኖርብናል።

ሌሎችም ማህበራዊ ጠቃሚ የሆኑ አሰጣጥ አገልግሎቶችን ለማስፈጸም ማድረግ ይኖርብናል። ሌሎችም ማህበራዊ ጠቃሚ የሆኑ አሰጣጥ አገልግሎቶችን ለማስፈጸም ማድረግ ይኖርብናል። ሌሎችም ማህበራዊ ጠቃሚ የሆኑ አሰጣጥ አገልግሎቶችን ለማስፈጸም ማድረግ ይኖርብናል።

### የሥራ ማስፈጸም ለማረጋገጥ?

ሌሎችም ማህበራዊ ጠቃሚ የሆኑ አሰጣጥ አገልግሎቶችን ለማስፈጸም ማድረግ ይኖርብናል። ሌሎችም ማህበራዊ ጠቃሚ የሆኑ አሰጣጥ አገልግሎቶችን ለማስፈጸም ማድረግ ይኖርብናል። ሌሎችም ማህበራዊ ጠቃሚ የሆኑ አሰጣጥ አገልግሎቶችን ለማስፈጸም ማድረግ ይኖርብናል።

### የሥራ ማስፈጸም ለማረጋገጥ?

ሌሎችም ማህበራዊ ጠቃሚ የሆኑ አሰጣጥ አገልግሎቶችን ለማስፈጸም ማድረግ ይኖርብናል። ሌሎችም ማህበራዊ ጠቃሚ የሆኑ አሰጣጥ አገልግሎቶችን ለማስፈጸም ማድረግ ይኖርብናል። ሌሎችም ማህበራዊ ጠቃሚ የሆኑ አሰጣጥ አገልግሎቶችን ለማስፈጸም ማድረግ ይኖርብናል።

### ጋራ ጥራት ማረጋገጥ

ጋራ ጥራት ማረጋገጥ ለማስፈጸም ማድረግ ይኖርብናል። <https://www.canada.ca/en/environment-climate-change/services/national-wildlife-areas.html>  
ሌሎችም ማህበራዊ ጠቃሚ የሆኑ አሰጣጥ አገልግሎቶችን ለማስፈጸም ማድረግ ይኖርብናል።







ከቅርብ እንደተባሰጠ ለደብዳቤ ለሚጠቀሙ አካላትና ለሌሎች ባለሙያዎች ለማሳካት ማድረግ ይቻላል።

ደብዳቤዎችን ለማሰብ፣ ለመላክና ለማሟላት ለሚያስፈልጉት ነገሮች ለሚጠይቁት አካላት ማግኘት ይቻላል። ለተጨማሪ መረጃ፣ እርግጠኞቻችንን ያነጋግሩ።

DRAFT

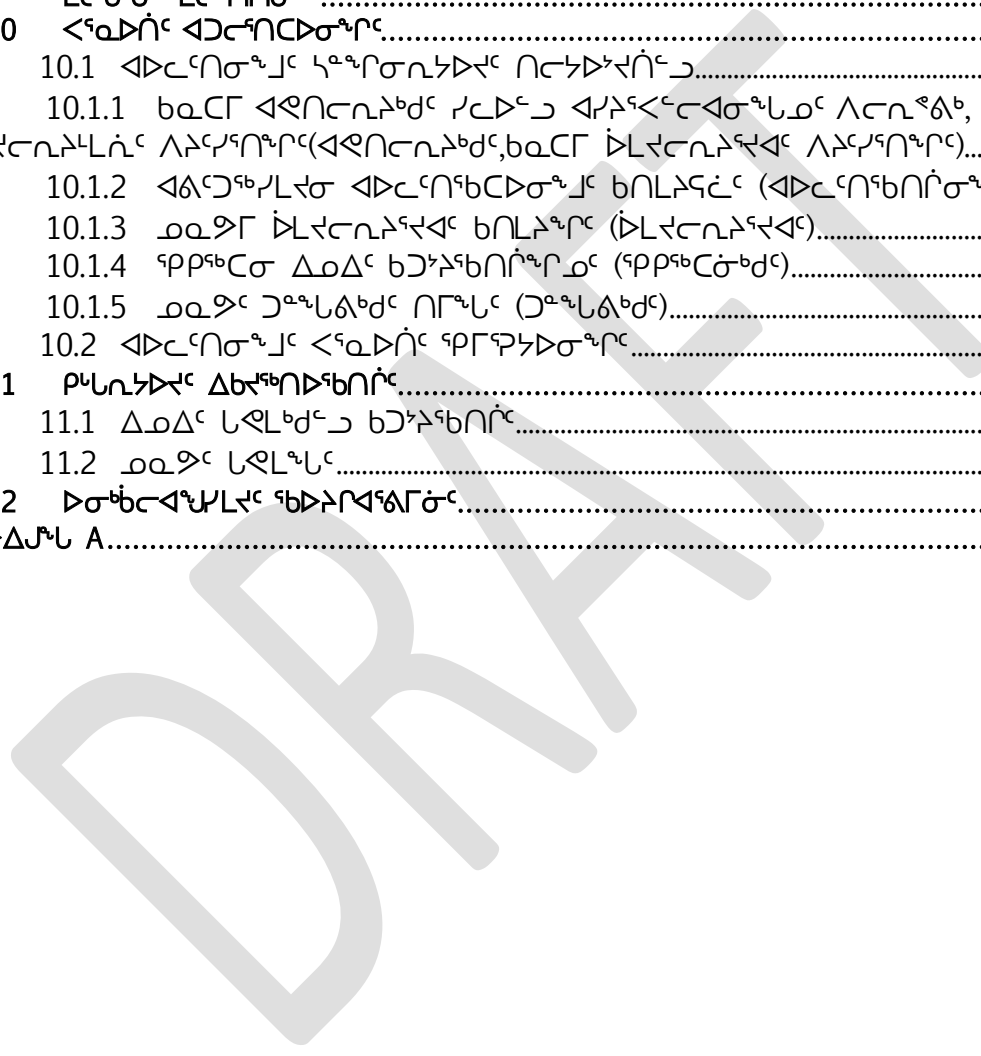


# ᐃᓗᓕᓃᓯᓂᑦ ᓄᓂᓕᓯᓵᑦ

- ᐃᓗᓕᓃᓯᓂᑦ ᓄᓂᓕᓯᓵᑦ..... VIII
- ᓄᓗᓄᐃᓄᓵᑦ ᓄᓂᓕᓯᓵᓯᑦ..... X
- ᐋᓶᓶᓃᓂᓱᑦ ᓄᓂᓕᓯᓵᓯᑦ..... XI
- ᐋᓶᓶᓂᓱᑦ ᓄᐃᓄᓂᓱᑦ ᓄᓂᓕᓯᓵᓯᑦ..... XII
- 1 ᓴᓶᓶᓄᐃᑦ ᐅᓂᓄᓂᓱ..... 1
  - 1.1 ᐋᓶᓶᓂᓱᓱᓴᓴᓂ ᓶᓶᓶᓄᐃᓂᓱᓴᓴᓂ..... 6
  - 1.2 ᓶᓶᓶᓂᓱᑦ ᓴᓄᓄᓄᓂᓱᓴᓴᓂᓴᓴᓂ..... 7
  - 1.3 ᓄᓄᓴᑦ ᓄᓃᓴᓂᓴᓂᓱᐅᓴᑦ ᐱᓄᓶᓴᓂᓱᐅᓴᑦ..... 8
  - 1.4 ᐃᑦᓗᓴᓂᓱᑦ ᐋᓶᓶᓂᓱᑦᓗ ᐱᓴᓂᓱᑦ..... 9
- 2 2 ᐃᓕᓴᓄᓶᓴᓂᓱᑦ ᓄᓄᓴᓂᓱᓴᓂᓱᓴᓂᓱᑦ..... 12
  - 2.1 ᐃᓕᓴᓄᓶᓴᓂᓱᑦ ᓶᓶᓶᓂᓱᓂᓴᓂᓱᓴᓂᓱᑦ..... 12
  - 2.2 ᓶᓶᓶᓂᓱᓴᓂᓱᑦ ᓄᓄᐃᑦ ᐱᓴᓴᓂᓱᓴᓂᓱᓴᓂᓱᑦ..... 14
  - 2.3 ᐱᓴᓄᓶᓶᓂᓱᑦ ᐋᓄᓄᓴᓂᓱᓴᓂᓱᓴᓂᓱᑦᓗ ᓂᓴᓶᓶᓴᓶᓶᓂᓱᓴᓂᓱᑦ..... 18
- 3 ᐋᓶᓶᓂᓱᑦᓴᓴᓂᓱᑦ ᐅᓴᓴᓂᓱᓴᓂᓱᑦ..... 19
  - 3.1 ᐅᓴᓴᓂᓱᑦ ᐱᓴᓴᓂᓱᑦ ᐃᓴᓴᓴᓂᓱᓴᓂᓱᑦᓗ ᓄᓴᓴᓂᓱᑦ..... 19
  - 3.2 ᐅᓴᓴᓂᓱᑦ (ᓂᓴᓴᓂᓱᑦ)..... 22
    - 3.2.1 ᐋᓴᓴᑦ..... 22
    - 3.2.2 ᐋᓴᓴᓂᓱᑦ ᓴᓴᓴᓴᓴᓂᓱᑦ ᓶᐃᓴᓂᓱᑦ..... 24
    - 3.2.3 ᓴᓴᓴᓴᓴᓂᓱᑦ ᐱᓶᓶᓂᓱᑦ ᐋᓴᓴᓂᓱᑦᓗ ᐅᓴᓴᓂᓱᓴᓂᓱᑦ..... 26
    - 3.2.4 ᓶᓴᓴᓴᓂᓱᑦ..... 26
    - 3.2.5 ᐅᓴᓴᓂᓱᑦ ᐱᓴᓴᓂᓱᑦ..... 29
  - 3.3 ᐅᓴᓴᓂᓱᑦ ᐃᓴᓴᓴᓂᓱᓴᓂᓱᑦ..... 29
  - 3.4 ᐅᓴᓴᓂᓱᑦ ᐋᓴᓴᓂᓱᑦ ᐋᓶᓶᓂᓱᑦ ᓄᓴᓴᓂᓱᓴᓂᓱᑦ..... 31
- 4 ᐋᓶᓶᓂᓱᓴᓂᓱᑦ ᐃᓴᓴᓴᓂᓱᓴᓂᓱᑦᓴᓴᓂᓱᑦ..... 32
  - 4.1 ᐅᓴᓴᓂᓱᓴᓂᓱᑦ..... 32
  - 4.2 ᓶᓴᓴᓂᓱᑦᓴᓴᓂᓱᑦ..... 32
  - 4.3 ᓂᐱᓴᓂᓱᑦ..... 33
  - 4.4 ᐅᓴᓴᓂᓱᑦᓴᓴᓂᓱᑦ ᐋᓶᓶᓂᓱᓴᓂᓱᑦ..... 33
  - 4.5 ᓶᓴᓴᓂᓱᑦᓴᓴᓂᓱᑦ ᓴᓶᓴᓂᓱᑦ..... 33
  - 4.6 ᓂᓶᓶᓂᓱᓴᓂᓱᑦ ᐃᓴᓴᓂᓱᓴᓂᓱᑦ..... 34
  - 4.7 ᓴᓴᓴᓂᓱᑦ ᐋᓶᓶᓂᓱᑦᓴᓴᓂᓱᑦ..... 34
- 5 ᓶᓴᓴᓂᓱᑦ ᐱᓴᓴᓂᓱᓴᓂᓱᑦ..... 36
  - 5.1 ᓴᓴᓴᓂᓱᑦᓴᓴᓂᓱᑦᓴᓴᓂᓱᑦ..... 36
  - 5.2 ᓶᓴᓴᓂᓱᑦ ᐱᓴᓴᓂᓱᓴᓂᓱᑦᓴᓴᓂᓱᑦ..... 36
  - 5.3 ᓴᓶᓶᓂᓱᓴᓂᓱᑦ..... 37
- 6 ᐋᓶᓶᓂᓱᓴᓂᓱᑦ..... 37
  - 6.1 ᐃᓕᓴᓄᓶᓴᓂᓱᑦᓴᓴᓂᓱᑦ ᐱᓴᓴᓂᓱᓴᓂᓱᓴᓂᓱᑦ ᐋᓶᓶᓂᓱᓴᓂᓱᑦ..... 37
  - 6.2 ᓄᓴᓴᓂᓱᑦᓴᓴᓂᓱᑦ ᓴᓴᓴᓂᓱᓴᓂᓱᑦ..... 44
  - 6.3 ᐅᓴᓴᓂᓱᑦᓴᓴᓂᓱᑦ ᓴᓴᓴᓂᓱᓴᓂᓱᑦ..... 44
  - 6.4 ᓄᓶᓶᓂᓱᓴᓂᓱᑦᓴᓴᓂᓱᑦ..... 45
  - 6.5 ᓴᓴᓴᓂᓱᑦᓴᓴᓂᓱᑦ..... 46



6.6	የክልል አካባቢ ጥበቃ ለማረጋገጥ የሚያስፈልጉ ስልጠናዎች ለሚሰጡት የሥራ ባለሙያዎች.....	48
7	ሥራ ለማስፈጸም የሚያስፈልጉ ስልጠናዎች.....	49
7.1	ግብርና ለማስፈጸም የሚያስፈልጉ ስልጠናዎች.....	49
7.2	ግብርና ለማስፈጸም የሚያስፈልጉ ስልጠናዎች ለሥራ ባለሙያዎች ለማስፈጸም የሚያስፈልጉ ስልጠናዎች.....	49
7.3	የሥራ ለማስፈጸም የሚያስፈልጉ ስልጠናዎች ለሥራ ባለሙያዎች ለማስፈጸም የሚያስፈልጉ ስልጠናዎች.....	50
7.4	ለሥራ ለማስፈጸም የሚያስፈልጉ ስልጠናዎች.....	50
7.5	የሥራ ለማስፈጸም የሚያስፈልጉ ስልጠናዎች ለሥራ ባለሙያዎች ለማስፈጸም የሚያስፈልጉ ስልጠናዎች.....	52
8	የሥራ ለማስፈጸም የሚያስፈልጉ ስልጠናዎች ለሥራ ባለሙያዎች ለማስፈጸም የሚያስፈልጉ ስልጠናዎች.....	53
9	የሥራ ለማስፈጸም የሚያስፈልጉ ስልጠናዎች.....	54
10	የሥራ ለማስፈጸም የሚያስፈልጉ ስልጠናዎች.....	55
10.1	የሥራ ለማስፈጸም የሚያስፈልጉ ስልጠናዎች ለሥራ ባለሙያዎች ለማስፈጸም የሚያስፈልጉ ስልጠናዎች.....	56
10.1.1	የሥራ ለማስፈጸም የሚያስፈልጉ ስልጠናዎች ለሥራ ባለሙያዎች ለማስፈጸም የሚያስፈልጉ ስልጠናዎች.....	56
10.1.1.1	የሥራ ለማስፈጸም የሚያስፈልጉ ስልጠናዎች ለሥራ ባለሙያዎች ለማስፈጸም የሚያስፈልጉ ስልጠናዎች.....	56
10.1.1.2	የሥራ ለማስፈጸም የሚያስፈልጉ ስልጠናዎች ለሥራ ባለሙያዎች ለማስፈጸም የሚያስፈልጉ ስልጠናዎች.....	56
10.1.1.3	የሥራ ለማስፈጸም የሚያስፈልጉ ስልጠናዎች ለሥራ ባለሙያዎች ለማስፈጸም የሚያስፈልጉ ስልጠናዎች.....	56
10.1.1.4	የሥራ ለማስፈጸም የሚያስፈልጉ ስልጠናዎች ለሥራ ባለሙያዎች ለማስፈጸም የሚያስፈልጉ ስልጠናዎች.....	56
10.1.1.5	የሥራ ለማስፈጸም የሚያስፈልጉ ስልጠናዎች ለሥራ ባለሙያዎች ለማስፈጸም የሚያስፈልጉ ስልጠናዎች.....	56
10.2	የሥራ ለማስፈጸም የሚያስፈልጉ ስልጠናዎች ለሥራ ባለሙያዎች ለማስፈጸም የሚያስፈልጉ ስልጠናዎች.....	57
11	የሥራ ለማስፈጸም የሚያስፈልጉ ስልጠናዎች ለሥራ ባለሙያዎች ለማስፈጸም የሚያስፈልጉ ስልጠናዎች.....	58
11.1	የሥራ ለማስፈጸም የሚያስፈልጉ ስልጠናዎች ለሥራ ባለሙያዎች ለማስፈጸም የሚያስፈልጉ ስልጠናዎች.....	58
11.2	የሥራ ለማስፈጸም የሚያስፈልጉ ስልጠናዎች ለሥራ ባለሙያዎች ለማስፈጸም የሚያስፈልጉ ስልጠናዎች.....	58
12	የሥራ ለማስፈጸም የሚያስፈልጉ ስልጠናዎች ለሥራ ባለሙያዎች ለማስፈጸም የሚያስፈልጉ ስልጠናዎች.....	59
ገጽ A	የሥራ ለማስፈጸም የሚያስፈልጉ ስልጠናዎች ለሥራ ባለሙያዎች ለማስፈጸም የሚያስፈልጉ ስልጠናዎች.....	70





## ደብዳቤ ለውጭ አለም አቀፍ

ደብዳቤ 1: የደብዳቤ ስራ ስልጠና ለውጭ አለም አቀፍ ጥያቄዎች ለውጭ አለም አቀፍ ጥያቄዎች.....	4
ደብዳቤ 2: ልዩ ልዩ ጥያቄ ለውጭ አለም አቀፍ ስራ ስልጠና ለውጭ አለም አቀፍ ጥያቄዎች.....	9
ደብዳቤ 3: ስራ ስልጠና ለውጭ አለም አቀፍ ስራ ስልጠና ለውጭ አለም አቀፍ ጥያቄዎች.....	30
ደብዳቤ 4: የውጭ አለም አቀፍ ስራ ስልጠና ለውጭ አለም አቀፍ ስራ ስልጠና ለውጭ አለም አቀፍ ጥያቄዎች.....	39
ደብዳቤ 5: የውጭ አለም አቀፍ ስራ ስልጠና ለውጭ አለም አቀፍ ስራ ስልጠና ለውጭ አለም አቀፍ ጥያቄዎች.....	55

DRAFT







QIA	ᖁᕂᕂᕐᑕᑦ ᐃᑦᐃᑦ ᑲᑦᑖᕐᑲᑲᑲᕐᑲ
QWB	ᖁᕂᕂᕐᑕᑦ ᐃᕐᑕᕐᑲᕐᑲᕐᑲᕐᑲᕐᑲ
RCMP	ᖁᕂᕂᕐᑕᕐᑲᕐᑲᕐᑲᕐᑲᕐᑲᕐᑲᕐᑲ
RIA	ᐃᕐᑕᕐᑲᕐᑲᕐᑲᕐᑲᕐᑲᕐᑲᕐᑲᕐᑲ
SARA	ᐃᕐᑕᕐᑲᕐᑲᕐᑲᕐᑲᕐᑲᕐᑲᕐᑲᕐᑲ
TC	ᐃᕐᑕᕐᑲᕐᑲᕐᑲᕐᑲᕐᑲᕐᑲᕐᑲᕐᑲ

DRAFT



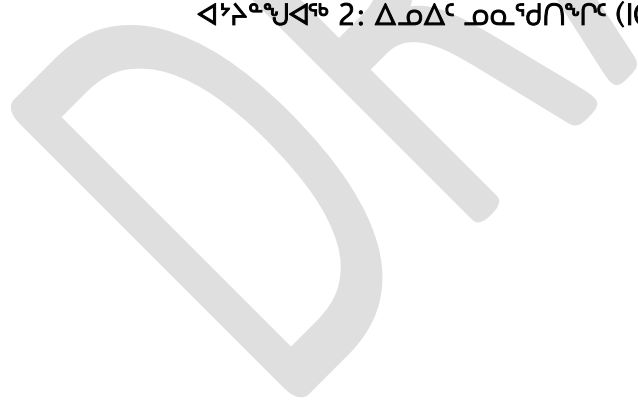




ፈተኛ ግብይት 1: ሙኅብኔጸፅ ግብይት



ፊደር ስልጠና 2: ፊደር ስልጠና (IOLs) ማሰባሰቢያ ስልጠና





### ዲጋራ 1: ዲጋራ ስፔሻላይዥን ፕሮግራም ለፎካል ግልጽ ገበያ ለግልጽ ግዴታ

ዲጋራው ስፔሻላይዥን	ባህሪው ፎካል ግልጽ
የዲጋራው የግዴታ አካል	ዲጋራ
ዲጋራው የሰፊት ስፊት ዲጋራው	69°50'N / 67°00'W
ስፊት	3,362 km <sup>2</sup> ሰፊት ለመጠን
ዲጋራው ስፔሻላይዥን ለደህንነት	<ul style="list-style-type: none"> <li>ግዴታው የፊል ልሳን ልሳን (<i>Balaena mysticetus</i>) ባህሪ.</li> <li>ልሳን የፊል ግዴታ የሚከናወኑበት ስፍራ ለማግኘት ዲጋራው.</li> <li>ልሳን ፎካል ግዴታ ለማግኘት ለሰፊት ግዴታ ለመቀረብ የሚገባውን የፊል ግዴታ (ዲጋራ, የህይወት ደረጃ, ዲጋራ, ዲጋራ) ለማግኘት ለሚገባው ግዴታ ለመቀረብ ዲጋራው ለማግኘት ዲጋራው.</li> </ul>
የዲጋራው የሰፊት ስፊት	A. ፎካል ስፔሻላይዥን የሚገኝበት ስፊት ለማግኘት ዲጋራው
የዲጋራው የግዴታ ስፊት ለማግኘት ስፊት (IUCN) ዲጋራው የሰፊት ስፊት	Ib - ፎካል ግዴታ ለማግኘት ዲጋራው
ባህሪው ስፊት ለማግኘት	P.C. 2010-705
የዲጋራው የግዴታ ስፊት ለማግኘት (DFRP) ስፊት	21601
ስፊት ለማግኘት ስፊት	2010
የዲጋራው የግዴታ ስፊት ለማግኘት	የፊል ስፊት ለማግኘት ስፊት ለማግኘት (ባህሪ ለማግኘት)
የዲጋራው የግዴታ ስፊት ለማግኘት ስፊት	ግዴታው የፊል ስፊት ለማግኘት ባህሪ.
የዲጋራው የግዴታ ስፊት ለማግኘት	ለዲጋራው ስፊት ለማግኘት
የዲጋራው የግዴታ ስፊት ለማግኘት	<p>የፊል ስፊት ለማግኘት ስፊት ለማግኘት ስፊት ለማግኘት (ኛ):</p> <p>ዲጋራ, የህይወት ደረጃ (ለማግኘት ስፊት ለማግኘት)</p> <p>ዲጋራ (ለማግኘት ስፊት ለማግኘት)</p> <p>ዲጋራ (ለማግኘት ስፊት ለማግኘት)</p> <p>የዲጋራው የግዴታ ስፊት ለማግኘት ስፊት ለማግኘት (ኛ):</p>
የዲጋራው የግዴታ ስፊት ለማግኘት	የዲጋራው የግዴታ ስፊት ለማግኘት ስፊት ለማግኘት (ኛ):













<p>           ᐱᓴᓂᐅ ᐃᓴᓂᓴᓴᓂᐅ; ᐱᓴᓂᓴᓴᓂᐅ ᐱᓴᓴᓴᓂᐅ            ᐱᓴᓴᓴᓂᐅ ᐱᓴᓴᓴᓂᐅ ᐱᓴᓴᓴᓂᐅ ᐱᓴᓴᓴᓂᐅ            ᐱᓴᓴᓴᓂᐅ ᐱᓴᓴᓴᓂᐅ         </p>	<p>ᐱᓴᓴᓴᓂᐅ</p>	<p>ᐱᓴᓴᓴᓂᐅ</p>
<p>ᐱᓴᓴᓴᓂᐅ ᐱᓴᓴᓴᓂᐅ ᐱᓴᓴᓴᓂᐅ.</p>	<p>ᐱᓴᓴᓴᓂᐅ</p>	<p>ᐱᓴᓴᓴᓂᐅ</p>
<p>ᐱᓴᓴᓴᓂᐅ ᐱᓴᓴᓴᓂᐅ ᐱᓴᓴᓴᓂᐅ</p>	<p>ᐱᓴᓴᓴᓂᐅ</p>	<p>ᐱᓴᓴᓴᓂᐅ</p>
<p>ᐱᓴᓴᓴᓂᐅ ᐱᓴᓴᓴᓂᐅ ᐱᓴᓴᓴᓂᐅ ᐱᓴᓴᓴᓂᐅ</p>	<p>ᐱᓴᓴᓴᓂᐅ</p>	<p>ᐱᓴᓴᓴᓂᐅ</p>

DRAFT



A



B



C



D



ᐃᓄᓂᓂᐅᓂ 3: ᐃᓄᓂᓂᐅᓂ 2011ᐖᓂᓂ ᐃᐅᓂᐖᐅᐅᓂᓂᓂᓂ ᐅᓂᓂᓂᓂ ᓂᐅᓂᓂᓂᓂ ᓂᓂᓂᓂᓂ ᐅᓂᓂᓂᓂᓂᓂᓂᓂᓂ. ᐅᓂᓂᓂᓂ ᐅᓂᓂᓂᓂᓂᓂᓂᓂᓂᓂ ᐅᓂᓂᓂᓂᓂᓂᓂᓂᓂᓂᓂ; B. ᐅᓂᓂᓂᓂᓂᓂᓂᓂᓂᓂᓂᓂᓂᓂ ᐅᓂᓂᓂᓂᓂᓂᓂᓂᓂᓂᓂᓂᓂ; C. ᐅᓂᓂᓂᓂᓂᓂᓂᓂᓂᓂᓂᓂᓂᓂᓂᓂᓂ ᐅᓂᓂᓂᓂᓂᓂᓂᓂᓂᓂᓂᓂᓂᓂᓂᓂᓂᓂᓂ.

## 2 ልገሥታዎችን ለማስፈራራት ማድረግ

### 2.1 ልገሥታዎችን ለማስፈራራት ማድረግ

የአሁን ጊዜ ልገሥታዎች ለሚኖሩት አካባቢ ለማስፈራራት ማድረግ ለሚገባው ጋራ ልምድ ለሆኑ ጋራ ልምድ ወይን እና ካርብን አካባቢ (Wenzel and Community of Clyde River 1999). ይህ የሚባለው ለሆነው ልገሥታዎች ለሚኖሩት አካባቢ ለማስፈራራት ማድረግ ለሚገባው ጋራ ልምድ ለሆኑ ጋራ ልምድ ወይን እና ካርብን አካባቢ (Wenzel and Community of Clyde River 1999). ይህ የሚባለው ለሆነው ልገሥታዎች ለሚኖሩት አካባቢ ለማስፈራራት ማድረግ ለሚገባው ጋራ ልምድ ለሆኑ ጋራ ልምድ ወይን እና ካርብን አካባቢ (Wenzel and Community of Clyde River 1999).

ርብርብ ለማስፈራራት ማድረግ ለሚገባው ጋራ ልምድ ለሆኑ ጋራ ልምድ ወይን እና ካርብን አካባቢ (Wenzel 2008). ይህ የሚባለው ለሆነው ልገሥታዎች ለሚኖሩት አካባቢ ለማስፈራራት ማድረግ ለሚገባው ጋራ ልምድ ለሆኑ ጋራ ልምድ ወይን እና ካርብን አካባቢ (Wenzel 2008).

የከፍተኛ ልገሥታዎች ለሚኖሩት አካባቢ ለማስፈራራት ማድረግ ለሚገባው ጋራ ልምድ ለሆኑ ጋራ ልምድ ወይን እና ካርብን አካባቢ (Wenzel 2008). ይህ የሚባለው ለሆነው ልገሥታዎች ለሚኖሩት አካባቢ ለማስፈራራት ማድረግ ለሚገባው ጋራ ልምድ ለሆኑ ጋራ ልምድ ወይን እና ካርብን አካባቢ (Wenzel 2008).

የከፍተኛ ልገሥታዎች ለሚኖሩት አካባቢ ለማስፈራራት ማድረግ ለሚገባው ጋራ ልምድ ለሆኑ ጋራ ልምድ ወይን እና ካርብን አካባቢ (Wenzel 2008). ይህ የሚባለው ለሆነው ልገሥታዎች ለሚኖሩት አካባቢ ለማስፈራራት ማድረግ ለሚገባው ጋራ ልምድ ለሆኑ ጋራ ልምድ ወይን እና ካርብን አካባቢ (Wenzel 2008).

Wenzel (2008) ይህ የሚባለው ለሆነው ልገሥታዎች ለሚኖሩት አካባቢ ለማስፈራራት ማድረግ ለሚገባው ጋራ ልምድ ለሆኑ ጋራ ልምድ ወይን እና ካርብን አካባቢ (Wenzel 2008).







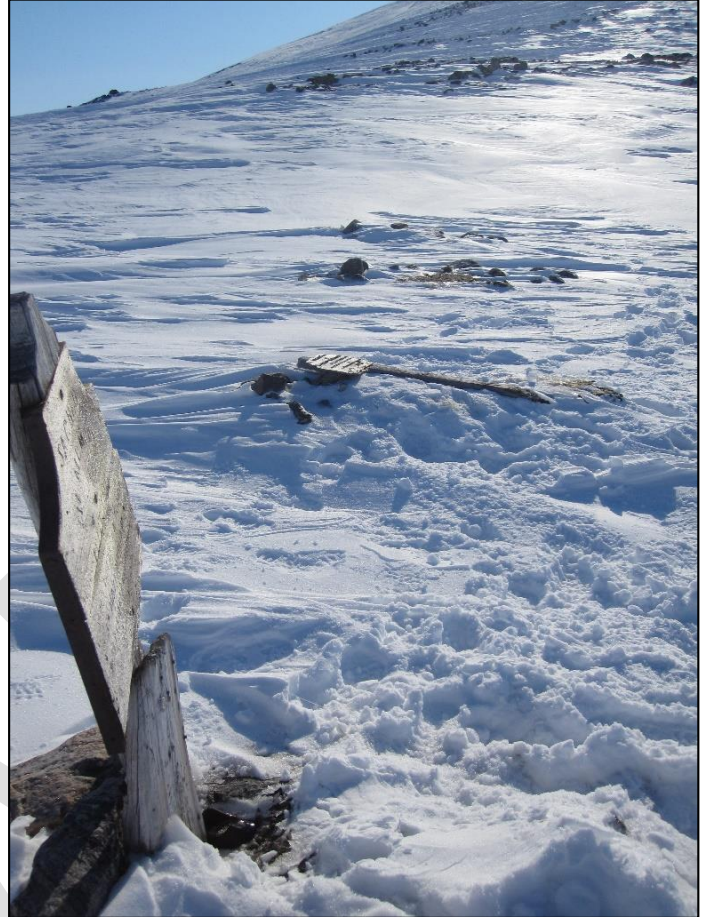




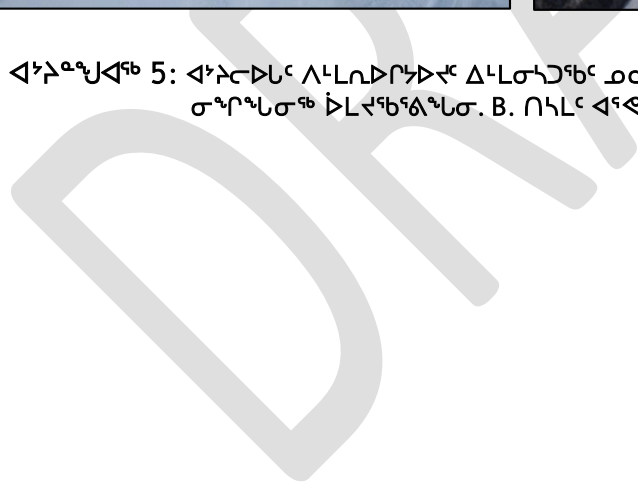
A



B



ᐃᓂᓂᓂᓂᓂᓂ 5: ᐃᓂᓂᓂᓂᓂᓂᓂ ᐃᓂᓂᓂᓂᓂᓂᓂ ᓂᓂᓂᓂᓂᓂᓂᓂ ᓂᓂᓂᓂᓂᓂᓂᓂ. A. ᓂᓂᓂᓂᓂᓂᓂᓂ ᓂᓂᓂᓂᓂᓂᓂᓂᓂ. B. ᓂᓂᓂᓂᓂᓂᓂᓂ ᐃᓂᓂᓂᓂᓂᓂᓂᓂ











*Armeria maritima*  
(ጥፍ ጋረሲፍ)



*Saxifraga nivalis*  
(ዲረፍ ግራሲ ጋረሲፍ)



*Alopocurus magellanicus*  
(ገረሲፍ)



*Silene uralensis*  
(ዲረፍ ግራሲፍ)



*Salix Arctica*  
(ግራሲፍ)



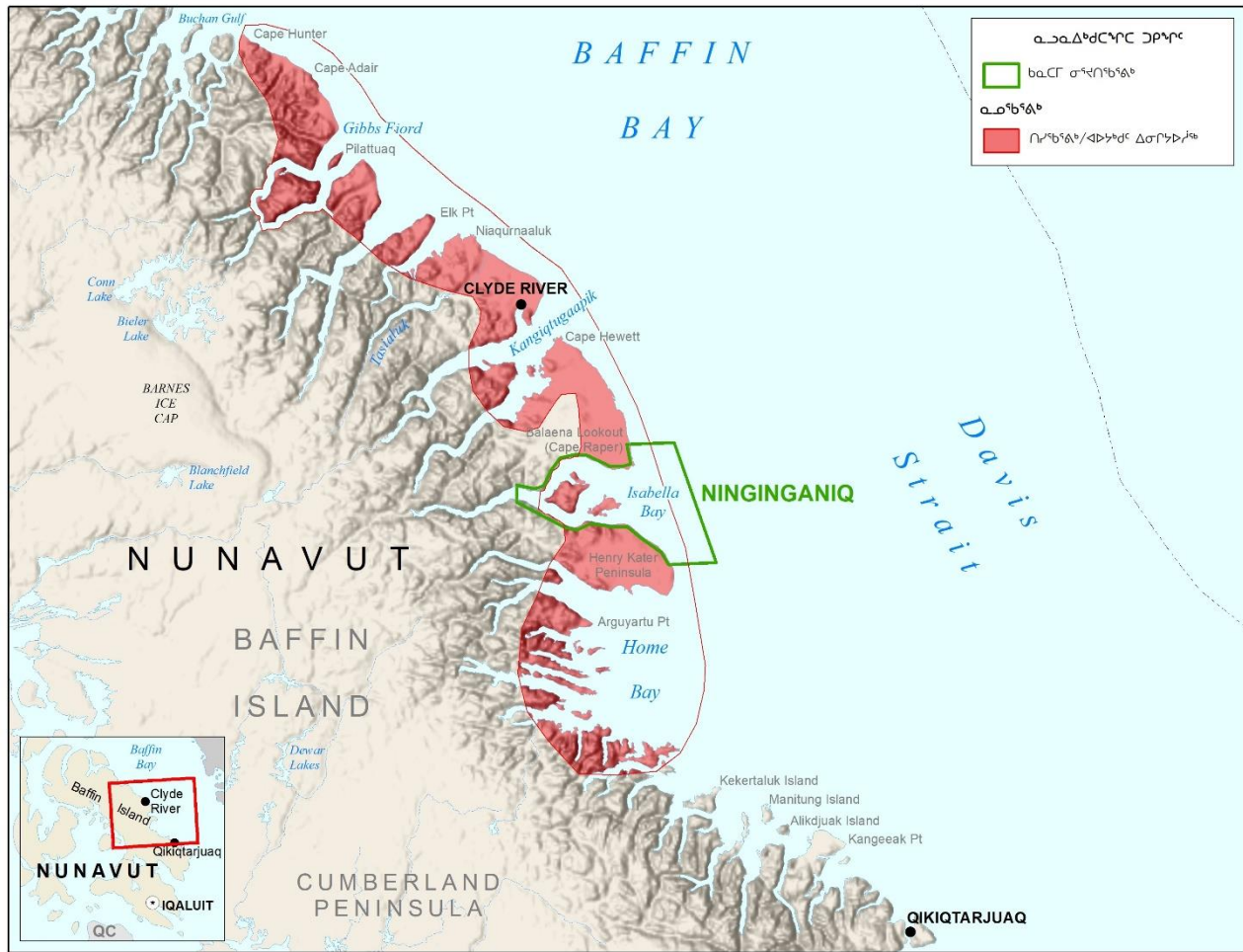
*Honckenya peploides*  
(ግራሲፍ)

ግራሲፍ 6: ግራሲፍ ግራሲፍ ግራሲፍ ግራሲፍ ግራሲፍ (ግራሲፍ ግራሲፍ: ግራሲፍ ግራሲፍ).









ᓄᓂᓂᓂᓂᓂᓂ 8: ᓄᓂᓂᓂᓂᓂᓂ ᓄᓂᓂᓂᓂᓂᓂ ᓄᓂᓂᓂᓂᓂᓂ ᓄᓂᓂᓂᓂᓂᓂ ᓄᓂᓂᓂᓂᓂᓂ

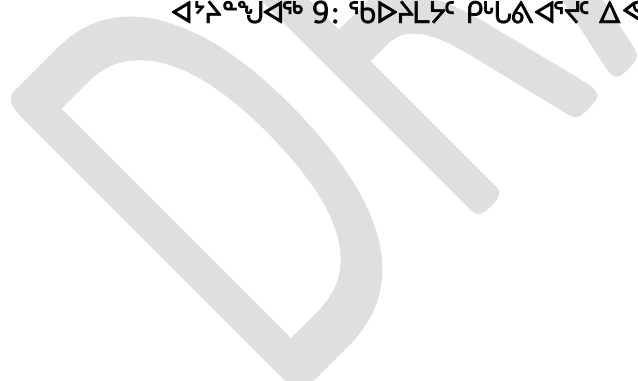








ᓂᓄᓂᓂᓂᓂ 9: ᓂᓄᓂᓂᓂᓂ ᓄᓄᓂᓂᓂᓂ ᓄᓄᓂᓂᓂᓂ ᓂᓄᓂᓂᓂᓂ.























Δ°CσΗϭϭ ϭβΔΔΔ<< ϩϭϭϭ ϭΔϭΔϭΔϭΔϭΔϭΔϭΔϭ, ΔΔΔΔΔΔΔΔΔΔΔΔ ΔΔΔ  
ΔΔΔΔΔΔ ϩΔΔΔΔΔΔΔΔΔ ΔΔΔΔΔΔΔΔ ΔΔΔΔΔΔΔ. ΔΔΔ ΔΔΔΔΔΔΔΔΔΔΔ  
ΔΔΔΔΔΔΔΔΔΔΔ ΔΔΔ ΔΔΔΔΔΔΔΔ ΔΔΔΔΔΔΔΔΔΔ ΔΔΔΔΔΔΔΔΔΔ, ΔΔΔΔ  
ΔΔΔΔΔΔΔ ΔΔΔΔΔΔΔ, ΔΔΔ ΔΔΔ ΔΔΔΔΔΔ ΔΔΔΔΔ ΔΔΔΔΔΔΔΔΔΔΔΔ.

DRAFT











ᐊᑦᑕᓐᑕᑦ ᐊᑦᑎᑦᑕᑦ ᐊᐅᑦᑕᑦ	ᐅᑦᑕᑦ ᐱᑦᐱᑦᑕᐅᑦᑕᑦ	ᐊᐅᑦᑕᑦᑕᑦ	ᐱᑦᑕᑦᑕᑦᑕᑦ ᑦᑕᑦᑕᑦᑕᑦ (ᑦᑕᑦᑕᑦᑕᑦ ᐊᑦᑕᑦᑕᑦ ᑕᑦᑕᑦᑕᑦ ᑕᑦᑕᑦᑕᑦ)
ᑎᑕᑦ ᐊᑦᑎᑦᑕᑦᑕᑦᑕᑦ	<p><b>ᐅᑦᑕᑦ 1:</b> ᑦᑕᑦᑕᑦᑕᑦ ᐊᑦᑕᑦᑕᑦ ᐊᑦᑕᑦᑕᑦ ᐊᑦᑕᑦᑕᑦ ᑕᑦᑕᑦᑕᑦᑕᑦ ᐊᑦᑕᑦᑕᑦᑕᑦ ᑦᑕᑦᑕᑦᑕᑦ ᐱᑦᑕᑦᑕᑦ, ᐊᑦᑕᑦᑕᑦ ᑕᑦᑕᑦᑕᑦ ᑕᑦᑕᑦᑕᑦ ᑕᑦᑕᑦᑕᑦᑕᑦᑕᑦᑕᑦ, ᑕᑦᑕᑦᑕᑦᑕᑦᑕᑦ ᑦᑕᑦᑕᑦᑕᑦᑕᑦᑕᑦᑕᑦ.</p> <p>ᐱᑦᑕᑦᑕᑦᑕᑦᑕᑦ 1.4: ᑕᑦᑕᑦᑕᑦᑕᑦᑕᑦ ᑕᑦᑕᑦᑕᑦᑕᑦᑕᑦᑕᑦ ᐊᑦᑕᑦᑕᑦᑕᑦᑕᑦ ᑦᑕᑦᑕᑦᑕᑦᑕᑦᑕᑦᑕᑦ ᑦᑕᑦᑕᑦᑕᑦᑕᑦᑕᑦᑕᑦ ᐊᑦᑕᑦᑕᑦ ᑕᑦᑕᑦᑕᑦᑕᑦᑕᑦᑕᑦᑕᑦ ᐊᑦᑕᑦᑕᑦᑕᑦᑕᑦ ᑦᑕᑦᑕᑦᑕᑦᑕᑦᑕᑦᑕᑦᑕᑦ.</p> <p>ᐱᑦᑕᑦᑕᑦᑕᑦᑕᑦ 1.5: ᐊᑦᑕᑦᑕᑦ ᑕᑦᑕᑦᑕᑦᑕᑦ ᑕᑦᑕᑦᑕᑦᑕᑦᑕᑦᑕᑦ ᐊᑦᑕᑦᑕᑦ ᑦᑕᑦᑕᑦᑕᑦᑕᑦᑕᑦᑕᑦ ᐊᑦᑕᑦᑕᑦᑕᑦᑕᑦᑕᑦ.</p>	<p>ᑕᑦᑕᑦᑕᑦ ᐊᐅᑦᑕᑦᑕᑦᑕᑦ ᐱᑦᑕᑦᑕᑦᑕᑦᑕᑦ 7ᑦ 10ᑦ ᑦᑕᑦᑕᑦᑕᑦ.</p>	



























6232660000 2320000000										
2320000000 2320000000 2320000000 2320000000 2320000000				X	X	X				
2320000000 2320000000 2320000000	X	X	X	X	X	X	X	X	X	X

### 10.1 2320000000 2320000000 2320000000

#### 10.1.1 2320000000 2320000000 2320000000 2320000000 2320000000

2320000000 2320000000 2320000000 2320000000 2320000000 2320000000 2320000000 2320000000 2320000000 2320000000

#### 10.1.2 2320000000 2320000000 2320000000 2320000000

2320000000 2320000000 2320000000 2320000000 2320000000 2320000000 2320000000 2320000000 2320000000 2320000000

#### 10.1.3 2320000000 2320000000 2320000000

2320000000 2320000000 2320000000 2320000000 2320000000 2320000000 2320000000 2320000000 2320000000 2320000000

#### 10.1.4 2320000000 2320000000 2320000000

2320000000 2320000000 2320000000 2320000000 2320000000 2320000000 2320000000 2320000000 2320000000 2320000000

#### 10.1.5 2320000000 2320000000 2320000000

2320000000 2320000000 2320000000 2320000000 2320000000 2320000000 2320000000 2320000000 2320000000 2320000000









Carter, N., Dawson, J., Joyce, J., Ogilvie, A. and Weber, M. 2017. Arctic corridors and Northern voices: governing marine transportation in the Canadian Arctic – Pond Inlet, Nunavut. Department of Geography, Environment and Geomatics, University of Ottawa.

Chan, F. T., Bronnenhuber, J. E., Bradie, J. N., Howland, K. L., Simard, N., and Bailey, S. A. 2012. Risk assessment for ship-mediated introductions of aquatic nonindigenous species to the Canadian Arctic. Canadian Science Advisory Secretariat, Research Document 2011/105, Fisheries and Oceans Canada.

Chan, F., Bailey, S., Wiley, C., and MacIsaac, H. 2013. Relative risk assessment for ballast-mediated invasions at Canadian Arctic ports. *Biological Invasions* 15 : 295-308.

Church, R. 2011. Arctic bottom trawling in Canadian waters: exploring the possibilities for legal action against unsustainable fishing. *Review of European Community & International Environmental Law* 20(1): 11-18.

Cosens, S. E., and Blouw, A. 2003. Size-and-age class segregation of Bowhead Whales summering in northern Foxe Basin: a photogrammetric analysis. *Marine Mammal Science*, 19(2): 284-296.

Cosens, S. E., Cleator, H., and Richard, P. 2006. Numbers of Bowhead Whales (*Balaena mysticetus*) in the Eastern Canadian Arctic, based on aerial surveys in August 2002, 2003 and 2004. Canadian Science Advisory Secretariat, Research Document 2006/052, Fisheries and Oceans Canada.

COSEWIC, Committee on the Status of Endangered Wildlife in Canada. 2009. Assessment and Update Status Report on the Bowhead Whale *Balaena mysticetus*, Bering-Chukchi-Beaufort population and Eastern Canada-West Greenland population in Canada. COSEWIC, Ottawa. 49 pp.

CWS, Canadian Wildlife Service. 1996. Draft Igalirtuuq National Wildlife Area Management Plan. Draft #5, October 25, 1995 with minor revisions on 4 September, 1996. 46 p.

Davis, P. T., Briner, J. P., Coulthard, R. D., Finkel, R. W., and Miller, G. H. 2006. Preservation of Arctic landscapes overridden by cold-based ice sheets. *Quaternary Research* 65: 156-163.

Dawson, J., Copland, L., Mussells, O. and Carter, N. 2017. Shipping trends in Nunavut 1990-2015: a report prepared for the Nunavut general monitoring program. Ottawa, Canada and Iqaluit, Nunavut.

Dawson, J., Pizzolato, L., Howell S. E. L., Copland, L., and Johnston, M. E. 2018. Temporal and spatial patterns of ship traffic in the Canadian Arctic from 1990 to 2015. *Arctic* 71(1): 15-26.

DFO, Department of Fisheries and Oceans. 2015a. Updated abundance estimate and harvest advice for the Eastern Canada-West Greenland Bowhead Whale population. DFO Can. Sci. Advis. Sec. Sci. Advis. Rep. 2015/052.





Finley, K. J. 1990. Isabella Bay, Baffin Island: an important historical and present-day concentration area for the Endangered Bowhead Whale (*Balaena mysticetus*) of the Eastern Canadian Arctic. *Arctic* 43(2): 137-152.

Finley, K. J. 1998. Isabella Bowhead Studies 1997 (Year of the Orange Fulmar). Report prepared by K. J. Finley Ecological Research for the Namautuq Hunters and Trappers Organization, Igalirtuuq Committee, Nunavut Wildlife Management Board, Nunavut Research Institute, World Wildlife Fund, and Canadian Wildlife Service.

Finley, K. J. 2001. Natural history and conservation of the Greenland Whale, or Bowhead, in the Northwest Atlantic. *Arctic* 54(1): 55-76.

Finley, K. J., and Miller, G. W. 1982. The 1979 hunt for Narwhals (*Monodon monoceros*) and an examination of harpoon gun technology near Pond Inlet, northern Baffin Island. Report of the International Whaling Commission 32: 449-460.

Finley, K. J., and Evans, C. R. 1984. First Canadian breeding record of the Dovekie (*Alle alle*). *Arctic* 37(3): 288-289.

Finley, K. J., Evans, C. R., and Davis, R. A. 1984. Evaluation of the importance of Isabella Bay, Baffin Island, as summer habitat for the Endangered Bowhead Whale. Progress Report of 1984 Studies. Prepared by LGL Ltd, King City, Ontario for World Wildlife Fund Canada.

Finley, K. J., Evans, C. R., and Murison, L. 1986. An investigation of Isabella Bay, Baffin Island, as summer habitat for the Eastern Arctic Bowhead Whale (*Balaena mysticetus*), 1983-1985. Prepared by LGL Ltd, Sidney, BC for World Wildlife Fund Canada.

Finley, K. J., Fissel, D. B., Goodyear, J. D., and Ashton, H. J. 1994. Definition of critical Bowhead Whale feeding habitat in Baffin Bay, 1992. Report by K.J. Finley Ecological Research and ASL Environmental Science Ltd. Sidney, B.C. for Supply & Services Canada, Environment Canada, World Wildlife Fund (Canada) and Indian Affairs & Northern Development. 99 pp.

Finley, K. J., Fissel, D. B., and Goodyear, J. D. 1998. The *Calanus* connection: feeding ecology and habitat of Bowhead Whales (*Balaena mysticetus*) within the Baffin marine ecosystem, in relation to climatic oscillations. Arctic seas, International Symposium on Climate Change, Mystic, Connecticut, October 21-24, 1998.

Fissel, D. B., Lemon, D. D., and Birch, J. R. 1982. Major features of the summer near-surface circulation of western Baffin Bay, 1978 and 1979. *Arctic* 35: 180-200.

Fortune, S. M. E., Koski, W. R., Higdon, J. W., Trites, A. W., Baumgartner, M. F., and Ferguson, S. H. 2017. Evidence of molting and the function of “rocknosing” behavior in Bowhead Whales in the eastern Canadian Arctic. *PLoS ONE* 12(11): e0186156.

Frasier, T. R., Petersen, S. D., Postma, L., Johnson, L., Heide-Jørgensen, M. P., and Ferguson, S. H. 2015. Abundance estimates of the Eastern Canada-West Greenland Bowhead Whale (*Balaena mysticetus*) population based on genetic mark-recapture analyses. Canadian Science Advisory Secretariat, Research Document 2015/008, Fisheries and Oceans Canada.



Gaston, A. J. 2011. Arctic seabirds: diversity, populations, trends, and causes. Pp 147-160 in Watson, R. T., Cade, T. J., Fuller, M., Hunt, G., and Potapov, E. (Eds.). Gyrfalcons and Ptarmigan in a Changing World, Volume I. The Peregrine Fund, Boise, Idaho, USA.

Gearhead, S., Matumeak, W., Angutikjuaq, I., Maslanik, J., Huntington, H. P., Leavitt, J., Matumeak Kagak, D., Tigullaraq, G., and Barry, R. G. 2006. "It's Not that Simple": a collaborative Comparison of sea ice environments, their uses, observed changes, and adaptations in Barrow, Alaska, USA, and Clyde River, Nunavut, Canada. *Ambio* 35(4): 204-212.

George, J. C., Philo, L. M., Hazard, K., Withrow, D., Carroll, G. M., and Sudam, R. 1994. Frequency of Killer Whale (*Orcinus orca*) attacks and ship collisions based on scarring on Bowhead Whales (*Balaena mysticetus*) of the Bering-Chukchi-Beaufort Seas Stock. *Arctic* 47(3): 247-255.

Gilbert, R. 1985. Quaternary glaciomarine sedimentation interpreted from seismic surveys of fiords on Baffin Island, N.W.T. *Arctic* 38(4): 271-280.

Government of the Northwest Territories. 1993. Terrestrial Wildlife – Igalirtuuq NWA. Letter prepared by Wildlife Management Division, Department of Renewable Resources, Government of the Northwest Territories, Yellowknife, N.W.T.

Government of Nunavut. 2005. Recommendations on Total Allowable Harvest (TAH) Rates for Terrestrial Wildlife Populations in Nunavut. Department of Environment. December 2005.

Government of Nunavut. 2014. Nunavut Coastal Resource Inventory – Clyde River 2014. Department of Environment, Fisheries and Sealing Division, Iqaluit, Nunavut. 71 pp.

Government of Nunavut. 2016. Nunavut Fisheries Strategy – 2016-2020. Department of Environment, Fisheries and Sealing Division.

Hansen, R. G., Heide-Jørgensen, M. P., and Laidre, K. L. 2012. Recent abundance of Bowhead Whales in Isabella Bay, Canada. *Journal of Cetacena Research and Management* 12(3): 317-319.

Harder, M. T., and Wenzel, G. W. 2012. Inuit subsistence, social economy and food security in Clyde River, Nunavut. *Arctic* 65(3): 305-318.

Harsem, Ø., Heen, K., Rodrigues, J. M. P., and Vassdal, T. 2015. Oil exploration and sea ice projections in the Arctic. *Polar Record* 51(1): 91-106.

Heide-Jørgensen, M. P., Laidre, K. L., Wiig, Ø., Jensen, M. V., Dueck, L., Maiers, L. D., Schmidt, H. C., and Hobbs, R. C. 2003. From Greenland to Canada in ten days: tracks of Bowhead Whales, *Balaena mysticetus*, across Baffin Bay. *Arctic* 56(1): 21-31.

Heide-Jørgensen, M. P., Laidre, K. L., Jensen, M. V., Dueck, L., and Postma, L. D. 2006. Dissolving stock discreteness with satellite tracking: Bowhead Whales in Baffin Bay. *Marine Mammal Science* 22: 34-45.



Higdon, J. 2008. Commercial and subsistence harvests of Bowhead Whales (*Balaena mysticetus*) in eastern Canada and West Greenland. CSAS Research Document 2008/008. <http://waves-vagues.dfo-mpo.gc.ca/Library/40590057.pdf>.

Higdon, J. W., Hauser, D. D. W., and Ferguson, S. H. 2011. Killer Whales (*Orcinus orca*) in the Canadian Arctic: distribution, prey items, group sizes, and seasonality. *Marine Mammal Science*. 2011.

Holland, C. A. 1970. William Penny, 1809-92: Arctic whaling master. *The Polar Record* 15(94): 25-43.

Igaliqtuuq Steering Committee. 2000. Bowhead Monitoring Project Final Report. Prepared by the Igaliqtuuq Steering Committee, Clyde River, Nunavut for Nunavut Wildlife Management Board.

IPCC, Intergovernmental Panel on Climate Change. 2014. Climate change 2014: Synthesis report. Contribution of working groups, I, II, and III to the fifth assessment report of the Intergovernmental Panel on Climate Change [Core writing team, R. K. Pachauri and L. A. Meyer (eds.)]. IPCC, Geneva, Switzerland, 151 pp.

Ives, J.D. and J.T Andrews. 1963. Studies on the physical geography of north-central Baffin Island, N.W.T. *Geographical Bulletin* 19: 5-48.

Jansen, J., Boveng, P., Dahle, S. and Bengston, J. 2010. Reaction of Harbor Seals to cruise ships. *Journal of Wildlife Management* 74(6): 1186-1194.

Jenkins, D. and Goorts, J. 2013. Baffin Island Caribou Consultations 2012. Consultation Report, Government of Nunavut, Department of Environment, Pond Inlet, NU. 86 pp.

Jørgensen, O. A., and Arboe, N. H. 2013. Distribution of the commercial fishery for Greenland Halibut and Northern Shrimp in Baffin Bay. Technical Report No. 91, Pinngortitaleriffik, Greenland Institute of Natural Resources.

Jørgensen, O. A., Hvingel, C., Møller, P. R., and Treble, M. A. 2005. Identification and mapping of bottom fish assemblages in Davis Strait and southern Baffin Bay. *Canadian Journal of Fisheries and Aquatic Sciences* 62: 1833-1852.

Jørgensen, O. A., Hvingel, C., and Treble, M. A. 2011. Identification and mapping of bottom fish assemblages in northern Baffin Bay. *Journal of Northwest Atlantic Fishery Science* 43: 65-79.

Kraus, S. D. 1990. Rates and potential causes of mortality in North Atlantic Right Whales (*Eubalaena glacialis*). *Marine Mammal Science* 6(4): 278-291.

Kugler, R. C. 1980. The Whale Oil Trade 1750-1775. Old Dartmouth Historical Sketch 79, New Bedford, Massachusetts.

Lackenbauer, W., and Lajeunesse, A. 2014. On Uncertain Ice: The Future of Arctic Shipping and the Northwest Passage. Prepared for the Canadian Defense & Foreign Affairs Institute, Calgary, AB.





Moshenko, R. W., Cosens, S. E., and Thomas, T. A. 2003. Conservation Strategy for Bowhead Whales (*Balaena mysticetus*) in the Eastern Canadian Arctic. National Recovery Plan No. 24. Recovery of Nationally Endangered Wildlife (RENEW). Ottawa, Ontario. 51 pp.

National Energy Board. 1994. Memorandum October 26, 1994.

Northern Environmental Marine Organization. 2002. Isabella Bay Bowhead Whale Critical Habitat Stewardship Program, Final Report 2001-2002. Prepared for Environment Canada. 14 pp.

Northern Environmental Marine Organization. 2003. Isabella Bay Bowhead Whale Critical Habitat Stewardship Program — Final Report 2002-2003. 51 pp.

Nevalainen, M., Helle, I., and Vanhatalo, J. 2018. Estimating the acute impacts of Arctic marine oil spills using expert elicitation. *Marine Pollution Bulletin* 131: 782-792.

Nickels, S. 1992. Northern Conservation and Tourism: the Perceptions of Clyde River Inuit. MA Thesis, McGill University, Montreal.

Nielsen, N. H., Laidre, K., Larsen, R. S., and Heide-Jørgensen, M. P. 2015. Identification of potential foraging areas for Bowhead Whales in Baffin Bay and adjacent waters. *Arctic* 68(2): 169-179.

Nunami Stantec. 2018. Strategic Environmental Assessment in Baffin Bay and Davis Strait. Oil and Gas Life Cycle Activities and Hypothetical Scenarios—May 30, 2018. 110 pp.

Nunavut Impact Review Board. 2019. Nunavut Impact Review Board Final Report for the Strategic Environmental Assessment in Baffin Bay and Davis Strait NIRB File No. 17SN034. Cambridge Bay, NU, Canada.

Nunavut Wildlife Management Board. 2000. Final report of the Inuit Bowhead Knowledge Study, Nunavut, Canada. Iqaluit, Nunavut: Nunavut Wildlife Management Board.

Priest, H. and P.J. Usher. 2004. The Nunavut Wildlife Harvest Study, Nunavut Wildlife Management Board, February 2004.

Paxian, A., Eyring, V., Beer, W., Sausen, R., and Wright, C. 2010. Present-day and future global bottom-up ship emission inventories including polar routes. *Environmental Science and Technology* 44: 1333-1339.

Peacock, E., Taylor, M. K., Laake, J., and Stirling, I. 2013. Population ecology of Polar Bears in Davis Strait, Canada and Greenland. *The Journal of Wildlife Management* 77(3): 463-476.

Philo, L. M., George, J. C., and Albert, T. F. 1992. Rope entanglement of Bowhead Whales (*Balaena mysticetus*). *Marine Mammal Science* 8(3): 306-311.

Pizzolato, L., Howell, S. E. L., Dawson, J., Laliberté, F. and Copland, L. 2016. The influence of declining sea ice on shipping activity in the Canadian Arctic. *Geophysical Research Letters* 43(12): 12,146–12,154.





Ross, W.G. 1993. Commercial whaling in the North Atlantic sector. Pages 511-561 in J.J. Burns, J.J. Montague and C.J. Cowles, eds. *The Bowhead Whale*. Special Publication No. 2. Society for Marine Mammalogy, Lawrence, KS.

Rugh, D. J., Miller, G. W., Withrow D. E., and Koski, W. R. 1992. Calving intervals of Bowhead Whales established through photographic identifications. *Journal of Mammalogy* 73: 487-490.

Sale, R. 2006. *A Complete Guide to Arctic Wildlife*. Firefly Books, Buffalo, New York.

Sanguya, J., and Gearheard, S. 2014. Documenting Inuit Knowledge about the People, Wildlife, and Wildlife. Final Report. 74 pp.

SARA Registry. 2017. Species profile: Bowhead Whale eastern Canada-west Greenland population. Accessed: December 2019. [https://wildlife-species.canada.ca/species-risk-registry/species/speciesDetails\\_e.cfm?sid=1054](https://wildlife-species.canada.ca/species-risk-registry/species/speciesDetails_e.cfm?sid=1054)

Schell, D. M., and Saupe, S. M. 1993. Feeding and growth as indicated by stable isotopes. In: Burns, J.J., Montague, J.J., and Cowles, C.J., eds. *The Bowhead Whale*. The Society for Marine Mammalogy, Special Publication No. 2. Lawrence, Kansas: Allen Press. 491-509.

Stachowicz, J. J., Whitlatch, R. B., and Osman, R. W. 1999. Species diversity and invasion resistance in a marine ecosystem. *Science* 286: 1577-1579.

Stewart, E. J., Dawson, J., and Draper, D. 2011. Cruise tourism and residents in Arctic Canada: development of a resident attitude typology. *Journal of Hospitality and Tourism Management* 18(1): 95-106.

Stewart, E. J., Dawson, J., Howell, S. E. L., Johnston, M. E., Pearce, T., and Lemelin, H. 2013. Local-level responses to sea ice change and cruise tourism in Arctic Canada's Northwest Passage. *Polar Geography* 36(1-2): 142-162.

Sutherland, P. C. 1853. On the geological and glacial phenomena of the coasts of Davis' Strait and Baffin's Bay. *Quarterly Journal of the Geological Society* 9: 296-312.

Vergeynst, L., Wegeberg, S., Aamand, J., Lassen, P., Gosewinkel, U., Fritt-Rasmussen, Gustavson, K., and Mosbech, A. 2018. Biodegradation of marine oil spills in the Arctic with a Greenland perspective. *Science of the Total Environment* 626: 1243-1258.

Ware, C., Berge, J., Jelmert, A., Olsen, S. M., Pellissier, L., Wisz, M., Kriticos, D., Semenov, G., Kwaśniewski, S., and Alsos, I. G. 2016. Biological introduction risks from shipping in a warming Arctic. *Journal of Applied Ecology* 53: 340-349.

Wenzel, G. W. 1989. Sealing at Clyde River, N.W.T: a discussion of Inuit economy. *Études/Inuit/Studies* 13(1): 3-22.

Wenzel, G. W. 1995. Ningiqtuq: resource sharing and generalized reciprocity in Clyde River, Nunavut. *Arctic Anthropology* 32(2): 43-60.



Wenzel, G. W. 2008, "Clyde Inuit settlement and community: from before Boas to centralization". *Arctic Anthropology* 45(1): 1-21.

Wenzel, G. W. 2011. Polar Bear management, sport hunting and Inuit subsistence at Clyde River, Nunavut. *Marine Policy* 35: 457-465.

Woodby, D. A. and Botkin, D. B. 1993. Stock sizes prior to commercial whaling. pp. 387-407. In: Burns, J. J., Montague, J. J., and Cowles, C. J. (eds.) *Special Publication. No. 2. The Bowhead Whale*. 1st. Edn. Society of Marine Mammalogy, Lawrence, KS. 787 pp.

DRAFT



