

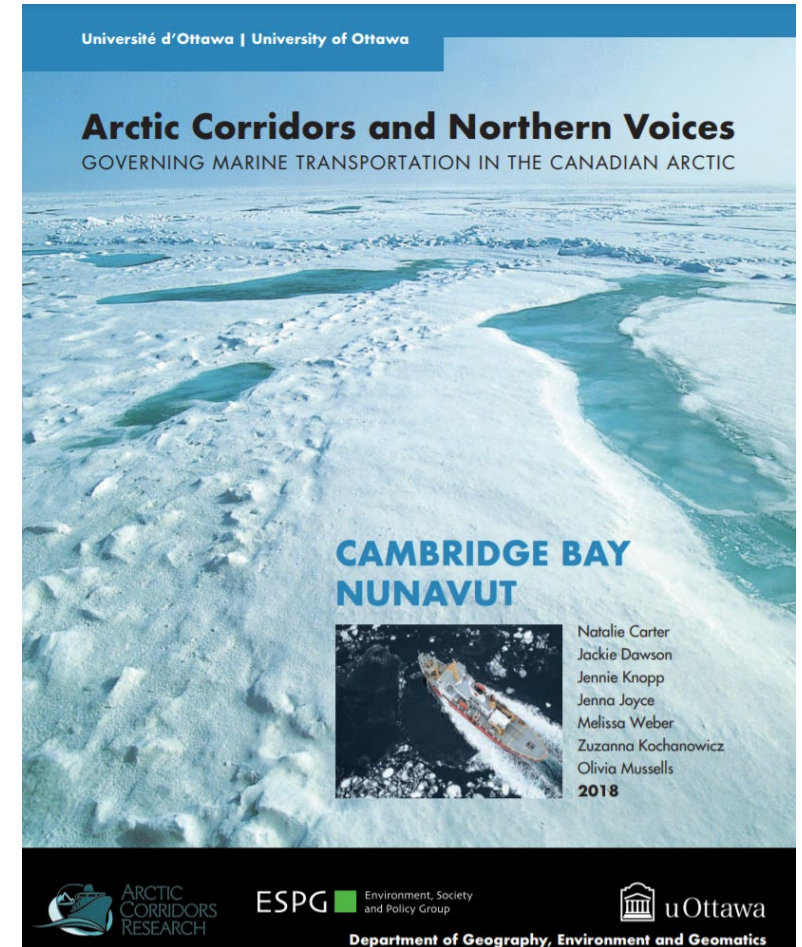


TRANSPORT CANADA PILOT PROJECTS IN CAMBRIDGE BAY

SEPTEMBER 2021

SHIPPING CONCERNS

- wcl4]g5tx6 srs6b6'g2 bEszb xd]b]A6ymCbs4m xml bfymKA xuha6X9oxJw5 sux6Jx6i xg6bs?o6g6 srs5 yKxAtx]naJ6.
- kNo4usbw5 wLwosDtQymo6m5J x5]gmyc6m x4/6gwi4f5:
- yf yd2t6X9oxi6
- xg6bsymJw5 iWgJk bm4fx wm6usbw]smJdtq5 xml wclw5
- xg6bsygw8NEx]o5 f=Jc6i6X s6hi4 x?tE/2t8k

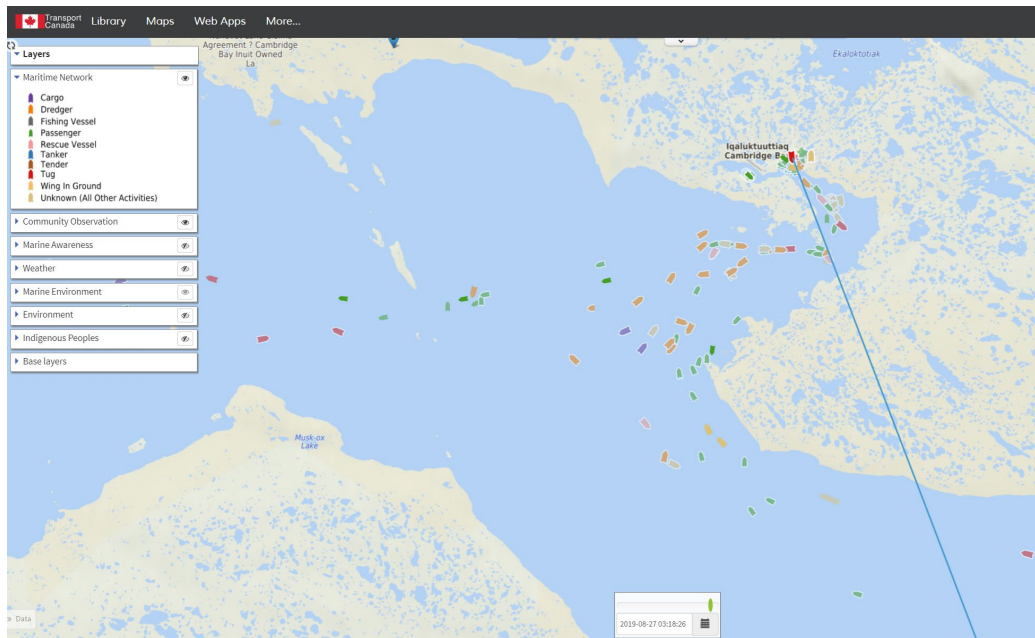


TRANSPORT CANADA OCEANS PROTECTION PLAN PILOT PROJECTS IN THE ARCTIC

- WsyQx6lQ5 bEs2 wmz ckEo6X9oiqA
s0p6gwi6
-]xesmtQx6lQ5 sux6Jx6 vm5tx6i4f5
-]smJw5 SwC5b6g6 x]gm/sJ5 sux6Jx6i4
x4/6gwJc6ymt9lA



ENHANCED MARITIME SITUATIONAL AWARENESS (EMSA)



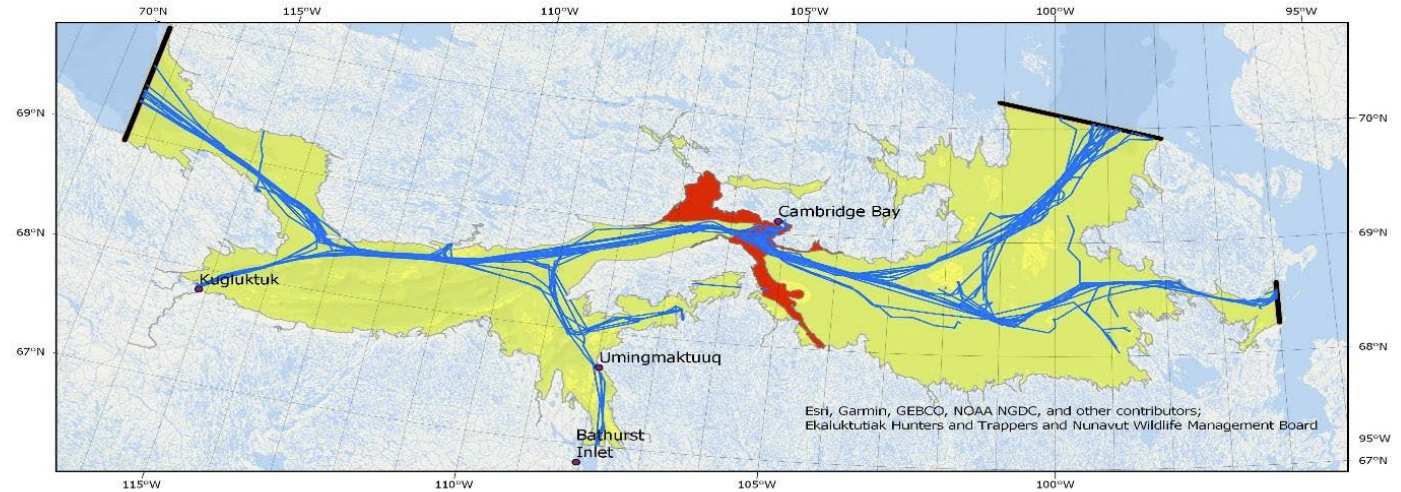
nesmJ6 x0pos6ym]i5_be9lx6u wqCisC5b6g6 yb7S @)!{(

- WsyQx6lQ5 bEs2 wmz ckEo6X9oxizA s0p6gwi6 W/4nsJ6 xml W=4nc6t5tJ6 xdtc6t5ti6 cspnDtu gnZ4noDbsix6gu
- cspnDt wosc6bsymC5b6g6 sux6Jx6i csp/sC5b6i6nsix6mb wqCiqA
- WsyQx6i6j bEs2 wmzk ckEo6X9oxizA cspnDt xg6bs?4g6:
- cspnwi6u sux6Jx6vo6X bEsdtK
-]s4gCwi6 cspnDtu xml trcN6ymJto4j wLx6yQxDtc6g6 kNo4usbw x5bN6g]udNQ5
- kNzfx4f5 xdtQC5b6bqA xml gM5b6=q8k9l NINwDtQJtQ/K

PROACTIVE VESSEL MANAGEMENT (PVM)

- n]et5tJA r4oi6 er6b6usb5 wmq8k x5bN6g]ubwomi6j vtm]p5
- vtmicCb6g5 be6yst Wzh5 N9o]Cz xml r[Z6g6tc6Lt kNo4usb6i xml Z?mgc4f8i4
- g4goEi6j9l wo8ixZ4nc6t5tMs34g6 srx4]n6 @)!(_at9IA
- ttc4f5 W?9oxi4f5 NINw6t5tymJw5 tn7S @)!(_u4

7C Vessels Intending to Navigate in Kitikmeot Region in Canada's Northern Waters



- Inuit Community
- Boundary Lines
- 2018 Track Lines
- Area of Intensive Winter Travel by Cambridge Bay Community Members
- Area of Winter Caribou Crossing

Data on this map reflects information from Automatic Information System (AIS) reports for vessels, as received both from satellite reports (space-based AIS) and radio tower reports (terrestrial AIS).

whm6h3t5tq8i6

Whm6h6t5tq8i6 x]gtcExc3g6 sux6Jx6k bmw4k xdt]fo6Xb nS8ix6bsymJi4 r4ozA NINw/6ymJ6 Gd6h34iz xml xsXl4iz kNax6u NINwfb]oH xml moZw5 moQxc6ix6bq5 yd2tEq8i6nsix6mb x5bN6g]ubwomi6j xgxZq8i xml sfx wMQ/q5: !. hvwoQx6v3g6 slExNq8i6nsix6m wqCiz tn7S !_u4]J8 #)_ j GxsXl4izb xd]bAH @.hvwoQx6v3g6 g4gi s]?!I8]i5 wk4i bfymoDt xd]noDt]I8]i5; #. x]gtc6t9IQ5 kNo4usbw5 gnsM/q5 sux6Jx6]cqExcqbW g4gw9l kwk9l yf4f5 wqCJw5 yKix]i4Xb; \$. xg6t5bwolQ xbsyqgk xdt4nsZ/6g6 g?cqu4.

CUMULATIVE EFFECTS OF MARINE SHIPPING

- W0JtQym/z xdys6toEp6Jx4f vNbu Ws]y5 xg6bsymiqA bEs4f5 x4/6gwi6j
- n8N=Q/six6g6 xs/6u @)!_!u4
- x5]gtc6g6 sux6Jx5 iWgiq5
- ✓ wm6j xsMJ8Ns]t5]s4gCDbslt ck6 bric6ym1m sux6Jx6 xml ck6 yo4tQ4m
- xg6bsymi6 sux6Jx6 wd7mo6t9IA
- WoExctc6ymJA vNbu d5t4gu srs6b6gu9l cspn6tsJi woscwJm2lb xsMJI4 x0posDti cspnwJ8N6ixC2b y0/5 hD6n3bsq7m]zb
- **s6h4u f=Jc6X sIExN6izA cspnwi6**
- r4oi6 er6bzi wm6k xdtbsJk x5bN6g]ubwomt5ti6j vtm]p5
- x]gtc6ymLi czbJtsJu x0posECb6ymJA wms2 y0/q8i yKost/Exc6i3nsJi ttCD8N6ixCtK9l ckwo6ymiz s6hu4 f=Jc6i6X

CONCLUSIONS

- wMsC5b6i6 bm4kz W/4nsJk xdys6toEp6Jx4f8i vNbu wloc3g6 sfiz:
- wLx6yQx6t5ti6 gnsmt]Q4i4f5 kN]o5 x?to]E4gi, xdys6toEp6Jx4f8i9l, xml vNbu sux6JxoE]p5 yfys6]t5
- xq9oQx6lA gnsmt/sJw5 xdtQlQ5
- xdtcEx6ly sux6Jx2 wqCix gnsmt/st9lQ5 kNo4usbw9l gnsmtbscbsltl
- xs/st9lA @)@!_u4 yMw8N6u n8N=c6i6
- W=4nc6tbsi6 vt6hwi6 kNos2 wlxi x5bN6g]ut5bwomi6j nNDtcExc6i6
- wwJ6gwi6 cspn6bsJti4 xml nS8ix6lQ5 kNo4usbw wmdtq6

