

SUBMISSION TO THE
NUNAVUT WILDLIFE MANAGEMENT BOARD AND
NUNAVIK MARINE REGION WILDLIFE BOARD

FOR

Information: X

Decision:

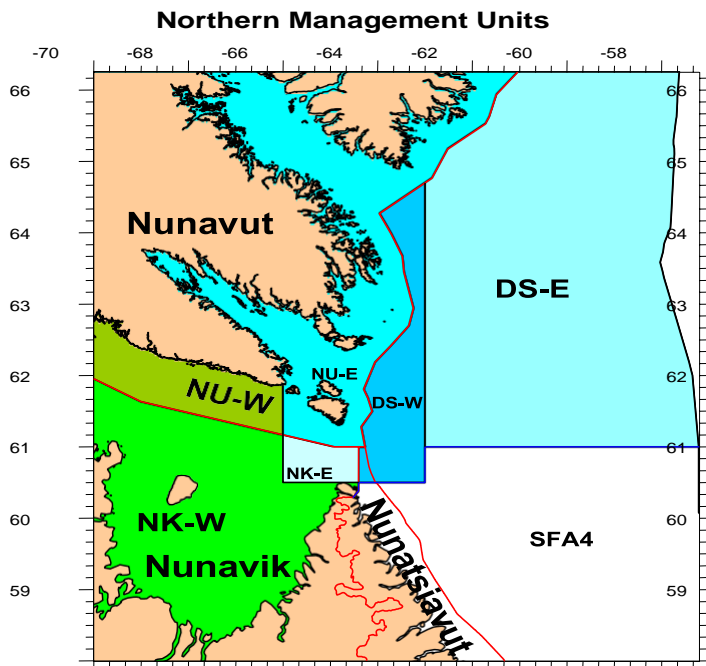
Recommendation:

Issue: Baffin Fisheries request to Carry Forward of 250 mt of *Pandalus borealis* in the Northern Shrimp Fishery in the Eastern Assessment Zone, Nunavut-East from 2021/22 to 2022/23 fishing season

Map:

Blue areas – Eastern Assessment Zone

Green areas – Western Assessment Zone



Northern shrimp (*Pandalus borealis*)



Striped shrimp (*Pandalus montagui*)

Background

Two shrimp species (*P. borealis* and *P. montagui*) occur in the Northern shrimp fishery that takes place in the Davis Strait and eastern Hudson Strait. This fishery is managed according to two distinct stock assessment zones, the Western Assessment Zone (WAZ) and the Eastern Assessment Zone (EAZ) (Appendix 1).

While allocations are provided annually for commercial fishing, season bridging of quota is regarded as a useful operational flexibility in the WAZ and EAZ shrimp fisheries that allows for additional opportunities to catch allocations in full, without compromising the sustainability of the resource.

Collectively, season bridging in the shrimp fisheries refers to 1) borrowing from the following year's quota to be fished in the current year; and 2) transferring some of the current year's unused quota to be caught in the following year (carry forward). Under the current bridging protocols in the EAZ, up to 350t is available for carry forward for Nunavut and 20t for Nunavik allocations, to be fished by July 31 of the following year. Quota that is not caught by this date will remain unfished.

Up until the beginning of the 2020/21 season, season bridging provisions in the EAZ applied only to the Davis Strait management units where *P. borealis* is the directed fishery. In July 2020, following a decision from the Nunavut Wildlife Management Board, season bridging for northern shrimp allocations was extended to include the Nunavut-East (NU-E)/Nunavik-East (NK-E) management units (Appendix 2).

The 350t carry forward provision for Nunavut entities is split between Davis Strait West (DSW)/NU-E (140t) and Davis Strait East (DSE) (210t). Each of these limits is further split among the quota holders based on their initial allocation share. For 2021/22, the limits on carry forward were established as follows:

Table 1 : Breakdown of Nunavut Carry forward limits:

<u>DSW/NU-E (140t)</u>	<u>DSE (210t)</u>
BFC (35%) = 49t	BFC (57%) = 120t
QC (35%) = 49t	QC (28.5%) = 59.5t
CSPF (15%) = 21t	CSPF (14.5%) = 30.5t
AFA (15%) = 21 t	

On April 12, 2022 Baffin Fisheries (BFC) requested to the Department that it be permitted a 250t carry forward of *P. borealis* be from fishing year 2021/22 to 2022/23 in fishing area EAZ, sub-area NU-E and NK-E, based on allocations (Appendix 3). The basis for this request is the Minister's decision on the 2021/22 Total Allowable Catch (TAC) for these management units (Appendix 4) which was communicated close to the point when ice conditions prevented the prosecution of the fishery.

The Department has also received a requests from Makivik Corporation to be permitted to exceed the current limits prescribed in the bridging (carry forward) provisions for the shrimp fisheries in DSW/NU-E/NK-E area.

Preliminary catch data indicates that approximately 50% (478t) of the overall *P. borealis* TAC (948t) in the NU-E/NK-E area was harvested during the 2021-22 fishing season. Following the established protocols, the limit of the collective quota carry-forward of DSW/NU-E for Nunavut entities from the 2021/22 fishery to the 2022/23 season 140t is and split as per Table 1.

BFC was provided access to an interim quota of approximately 186t in the NU-E/NK-E as of March 24, 2021. BFC received an additional 186t of interim quota access as of September 24, 2021 for a total of 371.7t. While BFC had access to interim quotas much earlier in the year, they did not request this access be added to their licence until November 12, 2021. On November 12, 2021, BFC transferred out 100t of its quota leaving a quota of 271.7t available on its licence for the 2020/21 fishery. Other allocation holders requested their access to the NU-E/NK-E area be added to their licence earlier in the year and were able to harvest 465t in area during the 2021/22 season.

While the final TAC decision for this area was not made until January 2022, BFC had access to 87% of their final quota as of September 24, 2021 yet only harvested just under 12t (3%) and transferred another 100t (27%) of its NU-E/NK-E interim access in the 2021/22 season.

Science Considerations

The *P. borealis* stock in the EAZ is in the Healthy Zone of the Precautionary Approach (PA) Framework.

Collectively, season bridging will result in an increased exploitation rate, especially if carry forward and borrowed quota is fished in the same year. The access to season bridges provides allocation holders with increased flexibility to aid in business planning, better prosecute the fishery and adjust to resource availability and market fluctuations. Limits on bridging (carry-forward and borrowing) are in place to assist in ensuring the sustainability of the fishery.

Despite the recent reduction in the estimate of the fishable biomass and the spawning stock biomass in 2021 for the EAZ stock, *P. borealis* remains in the healthy zone of the PA Framework, and as such DFO Science does not foresee negative consequences of allowing carry-forwards as prescribed for the stock.

Next Steps

BFC had access to fish nearly 43.5% of their overall quota as of March 24, 2021 and 87% as of September 24, 2021 (371.7t) in the NU-E/NK-E area. As noted, BFC transferred 100t and only harvested approximately 12t of its access. Season bridging aims to enhance socioeconomic outcomes of the shrimp fishery, but must be balanced with sustainability considerations. The allowance for a carry forward of NU-E/NK-E *P. borealis* allocation was first instituted at the end of the 2019/20 season, so the scheme is in its early stages which aligns with a cautious approach.

The Department recognizes that industry has requested further discussion occur regarding the current season bridging approach and whether allowances are appropriate. At this time it is recommended that the process currently in place be followed for this season but DFO is open to further discussions with harvesters to determine if modifications may be warranted. Given the above, it is recommended that the season bridging (carry-forward) provisions in place for DSW (including the NU-E/NK-E) for the 2021/22 season continue to be applied as established. This

same approach would be in place for any other allocation holder requesting carry-forwards. Additionally, the Department recommends that BFC be limited to carry forward a total of 49t of *P. borealis* in the NU-E/NK-E area which can be fished during the first 120 days of the fishery (between April 1 – July 31, 2022).

Prepared by: Fisheries Resource Management, Fisheries and Oceans Canada

Date: May 6, 2022

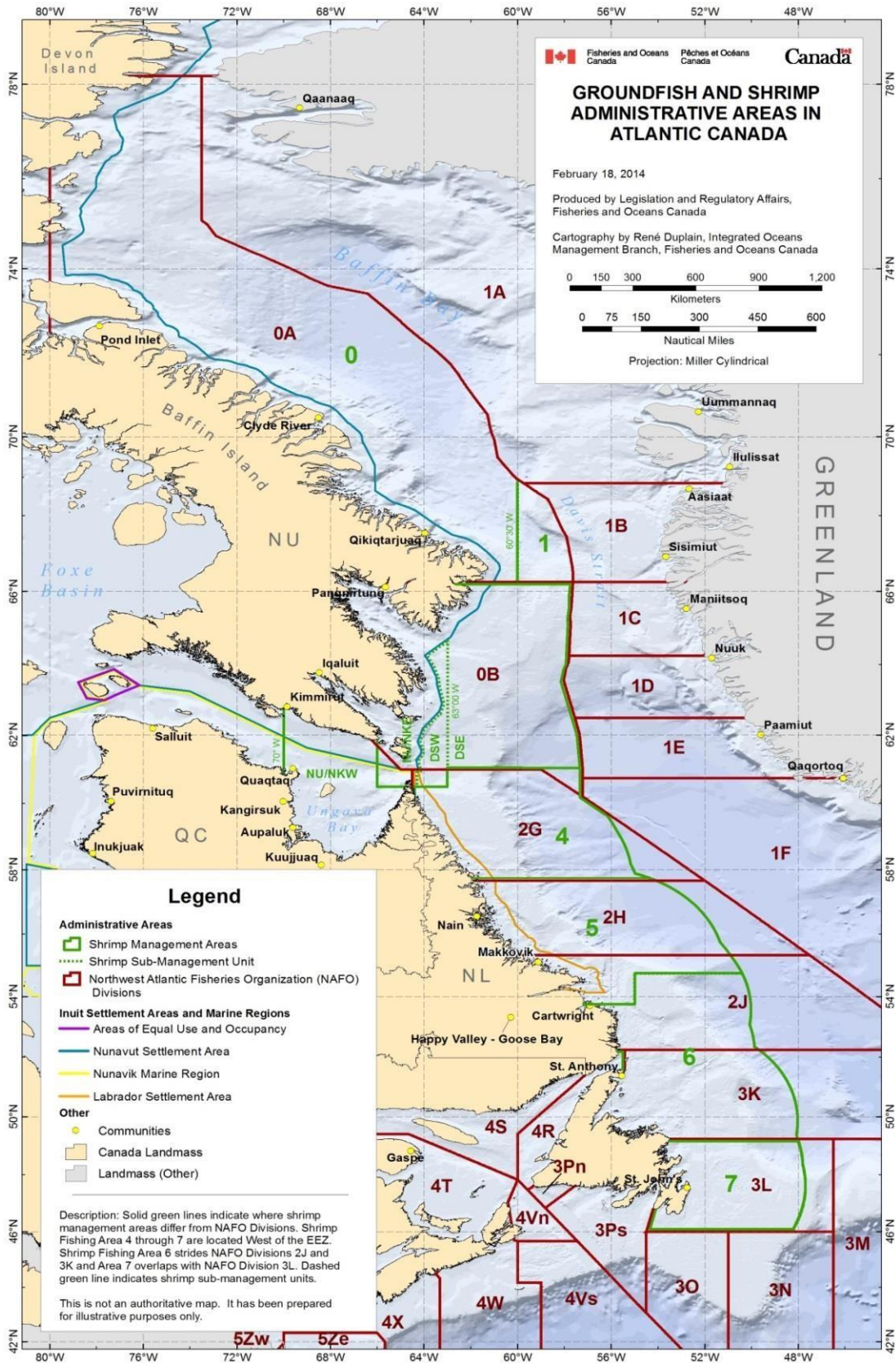
Appendices

Appendix 1 – Map of groundfish and shrimp administrative areas in Atlantic Canada

Appendix 2 – Season bridging protocol for NU and NK Allocations in the WAZ and EAZ

Appendix 3 – Baffin Fisheries letter requesting carry forward for 2022

Appendix 4 – 2021 Total Allowable Catches for the Eastern Assessment Zone



Season Bridging Protocol for NU and NK Allocations in the WAZ and EAZ

Carry Forward

WAZ (*P. montagui*)

The Department will make 800t available in the WAZ for carry forward to Nunavut and Nunavik allocation holders annually; sharing of this amount will be consistent with the sharing arrangement established by the Boards.

Currently, based on the 50/50 split, Nunavut and Nunavik will each be able to bridge a total of 400t each. Any carry forward quota not caught by September 30 of the following year will remain unfished.

EAZ - Davis Strait, NU/NK E¹ (*P. borealis*)

350t will be available for carry forward for Nunavut and 20t for Nunavik allocations, to be fished by July 31 of the following year. Quota that is not caught by this date will remain unfished.

Where the *P. borealis* stock is no longer in the Healthy Zone, carry forward amounts are reduced such that:

- If the stock is in the Cautious Zone, original carry forward amounts for Nunavut and Nunavik allocations are reduced by 13% and 26% in the upper- and lower-half of the Cautious Zone, respectively.
- If the stock is in the Critical Zone, no carry forward is permitted.

Borrowing

WAZ (*P. montagui*)

Nunavut and Nunavik shall share a total of 550t annually for borrowing based on sharing arrangements established by the Boards, which is currently 275t each. Requests to borrow quota will be assessed by the Department on a case by case basis in consideration of ice and climate conditions.

EAZ - Davis Strait, NU/NK E² (*P. borealis*)

Nunavut and Nunavik entities shall be allowed to borrow a total of 225t and 10t respectively from their following year's allocations, to be fished in the last month (March) of the current fishery.

¹ Subject to the Minister's decision to remove the bycatch designation for *P. Borealis* in NU/NK E.

² Subject to the Minister's decision to remove the bycatch designation for *P. Borealis* in NU/NK E.

Table 1. Nunavut and Nunavik allocations available for carry forward and borrow.

Area	Nunavik		Nunavut	
	Carry forward	Borrow	Carry forward	Borrow
WAZ <i>P. montagui</i>	400t	275t	400t	275t
WAZ <i>P. borealis</i>	<i>N/A - Bycatch</i>			
EAZ <i>P. montagui</i>	<i>N/A - Bycatch</i>			
EAZ <i>P. borealis</i> (Davis Strait NU/NK E ¹)	20t	10t	350t	225t

¹ Subject to the Minister's decision to remove the bycatch designation for *P. borealis* in NU/NK E.



January 20, 2022 / 20 janvier 2022

Northern Shrimp Advisory Committee / Comité consultatif de la crevette nordique

**2021 Total Allowable Catches
(TACs) for the Eastern Assessment Zone
(EAZ)**

**2021 Total autorisé des captures (TACs)
pour la Zone d'évaluation est (ZEE)**

Quotas for Nunavut and Nunavik in the EAZ
have been increased by 15 per cent as follows:

Les quotas pour le Nunavut et le Nunavik dans la
ZEE ont été augmentés de 15 % comme suit:

FLEET / INTEREST	AREA	TAC (t)
Nunavut Borealis	NU E	758
Nunavik Borealis	NK E	190
Nunavut Montagui	NU E	346
Nunavik Montagui	NK E	148

FLOTTILLE/INTÉRÊT	ZONE	TAC (t)
Nunavut Borealis	NU E	758
Nunavik Borealis	NK E	190
Nunavut Montagui	NU E	346
Nunavik Montagui	NK E	148

If you have any questions, please do not
hesitate to contact me.

Si vous avez des questions, n'hésitez pas à
communiquer avec moi.

Todd Williams

Todd Williams
Chair, Northern Shrimp Advisory Committee /
Président, Comité consultatif de la crevette nordique

c.c.: RDGs / DGR
Gordon Goodkey