

**SUBMISSION TO THE
NUNAVUT WILDLIFE MANAGEMENT BOARD
FOR**

Information

Decision: X

Issue: To seek approval from the Nunavut Wildlife Management Board (NWMB) on the aspects of the draft Quttinirpaaq National Park Management Plan that concern wildlife management.

Background:

(a) How the issues relates to the NWMB mandate;

Parks Canada and the Quttinirpaaq Joint Park Management Committee (JPMC) is seeking NWMB approval of the aspects in the draft Quttinirpaaq National Park Management Plan (enclosed) that concern wildlife management. This draft management plan, once approved, will replace the plan that was approved by the Minister responsible for Parks Canada in 2009.

(b) Why the issue is being presented;

This issue is being presented in accordance with the requirements of the Inuit Impact and Benefit Agreement for Auyuittuq, Quttinirpaaq and Sirmilik National Parks (known hereafter as the Baffin IIBA). The following articles are addressed in the management plan before the Board:

- Section 5.3.35: *“The JPMC will forward the final draft Plan to the NWMB. Under subsections 5.2.34 (c) and (d) of the NLCA, the NWMB may, in its discretion, approve any part of the final draft Plan that concerns the management and protection of particular wildlife or wildlife habitats. The NWMB decision is subject to review by the Minister under Sections 5.3.16 to 5.3.23 of the NLCA. Upon completion of the NWMB approval process, the final draft Plan will be returned to the JPMC.”*
- Section 8.1.14: *“Upon ratification of the Agreement, Parks Canada and the QIA will ask the NWMB to consider prohibiting sport fishing in Quttinirpaaq National Park until the NWMB determines whether the lakes in the Park can sustain sport fishing.”* The NWMB approved a prohibition on sport fishing in Quttinirpaaq National Park in 2006, and this draft management plan is not proposing any changes to this ban. Note that this prohibition only applies to visitors to Quttinirpaaq National Park, which does not include Inuit exercising rights-based activities provided for in the *Nunavut Agreement*.

No wildlife management measures that affect Inuit rights-based activities provided for in the *Nunavut Agreement* is being proposed in the draft management plan.

(c) The key facts and circumstances relating to the issue; and

The *Canada National Parks Act* and the *Parks Canada Agency Act* require every national park administered by Parks Canada to have a management plan; once developed, it is to be reviewed every ten years with any changes to be tabled in Parliament and approved by the Minister responsible for Parks Canada. In the Nunavut Field Unit, implementing the Baffin IIBA requires the management plan to be developed by the Park Planning Team (PPT), which is a joint Inuit/government planning team that consists of an equal number of members appointed by Parks Canada and the Qikiqtani Inuit Association.

In preparation of the draft Quttinirpaaq National Park Management Plan, the PPT undertook early engagement (Fall 2018-Winter 2019) with key stakeholders, including Inuit in the communities of Resolute Bay and Grise Fiord, which are described in the Baffin IIBA as the adjacent communities with a special relationship to the park. This feedback directly informed the development of the vision, key strategies, objectives, and targets outlined in the draft management plan, which was approved for formal public consultation by the JPMC in November 2019. Due to delays as a result of the COVID-19 pandemic, consultations on the draft plan occurred in Summer 2022 through Winter 2023.

The management plan is a high-level, results-based guidance document for the next ten years of management, planning, and operations within Quttinirpaaq National Park.

Only sparse sections of the document address wildlife management considerations, including:

- The continuation of the NWMB-approved prohibitive ban on sport fishing within all bodies of water inside the boundary of Quttinirpaaq National Park, and;
- Zoning restrictions related to the access and use of land in defined areas that support critical habitat for species at risk and cultural heritage resources. In particular, the major change in zoning from the previous 2009 management plan is the approach to the Lake Hazen/Tasialuk Basin, which has shifted to Zone II with a Special Management Area designation. This shift highlights the importance of maintaining a high level of protection for this very special region, while encouraging continued research and small-scale visitation in a way that is consistent with Parks Canada zoning in other locations. It is primarily an administrative change intended to ensure that the policy framework for this area is better aligned with current and projected use patterns.

(d) The estimated time required to orally present the issue (excluding questions/discussion).

Parks Canada staff will deliver a 15–20-minute PowerPoint presentation (enclosed) that provides details about the management planning process, an overview of the draft management plan (i.e., key strategies, objectives, and zoning), and the results of consultation.

Consultation:

How We Engaged:

The formal consultation exercises conducted in 2022 and early 2023 sought to confirm the success to which the shared interests expressed in early engagement conversations were incorporated into the draft management plan.

The general approach included the following:

- Consultation was undertaken mainly through face-to-face stakeholder meetings and open house presentations. These sessions included a presentation on management planning and the development of the draft management plan and an overview of the draft management plan vision, key strategies and objectives, and zoning. These meetings occurred in both Resolute (June 21-23 and July 11-14, 2022) and Grise Fiord (November 7-9, 2022). Targeted stakeholders based out of Iqaluit were also engaged primarily through virtual meetings and email communication (Winter 2023).
- In Resolute, as consultations took place during the summer, the Park Planning Team hosted a community barbeque in partnership with the Quttinirpaaq Joint Park Management Committee.
- In Grise Fiord, in addition to face-to-face meetings, a radio broadcast was presented on the community radio to generate awareness of the project and to promote an upcoming open house event. The radio in Resolute has been experiencing on-going technical difficulties, so a radio broadcast was not possible.
- In both communities, print flyers with detailed background information about the management planning process, where to access the online comment card, and upcoming in-community open house meetings were distributed into local mailboxes where possible or were otherwise left for easy access at the local post office. Flyers advertising the open house meeting details were also displayed at various high-traffic locations in communities (e.g., Co-op store, Hamlet offices, hotel, etc.) throughout the week leading up to each event.
- Written materials were sent to any stakeholders for comment if face-to-face meetings could not be arranged.

Who We Engaged:

Table 1. Number, type of stakeholders consulted in Resolute (June 21-23; July 11-14, 2022).

Stakeholder Group	Type of Consultation	Estimated Number of Individuals
Quttinirpaaq Joint Park Management Committee meeting*	In-person	3
One-on-one with the Mayor of Resolute	In-person	1

Delegation to Hamlet Council meeting*	In-person	5
Community Open House*	In-person	10
Community BBQ*	In-person	40
Hunters and Trappers Association**	Email & in-person opportunistic conversations	?
TOTAL		59

**Indicates events that were open to the general public.*

***HTA was invited to participate in the stakeholder meeting with the Mayor of Resolute Bay, but unfortunately, none were able to attend on the day of the event. Other efforts both in person and virtually via phone/email were made to arrange a meeting with no success. Opportunistic conversations with members were held at the community BBQ, and a virtual copy of the consultation materials was provided via email to the HTA Manager for distribution to Directors.*

Table 2. Number, type of stakeholders consulted in Grise Fiord (November 7-9, 2022).

Stakeholder Group	Type of Consultation	Estimated Number of Individuals
Invited stakeholder meeting (Hamlet Council, Hunter and Trappers Association, etc.)	In-person	9
Open House*	In-person	12
Hamlet Lobby display*	In-person	5 + various passive connections
Grise Fiord community radio*	In-person	?
Pancake breakfast at local school (with Royal Canadian Mounted Police)	In-person	?
TOTAL		26

**Indicates events that were open to the general public.*

In addition to community consultations, the PPT reached out to key government departments and stakeholders with involvement or interest in Quttinirpaaq National Park virtually or via email, including the Department of Fisheries and Oceans, Department of National Defence, Environment and Climate Change Canada, the Government of Nunavut, and the Inuit Heritage Trust.

Online consultation was open from June through to December 2022 through the *Consulting with Canadians* webpage, directing the public to the Parks Canada webpage. Here, information was provided on the development of the 2020 Draft Management Plan along with an overview of Parks Canada’s management planning process. Visitors to the site were invited to either fill out a comment card with specific questions about the plan or directly email their input to Parks Canada staff. A link was shared on the Parks Canada social media pages and local Facebook groups in Resolute and Grise Fiord in English, French, and Inuktitut.

Table 3. Summary of online participation and engagement.

Type of Engagement	Reach
Visits to online “landing page” about the project posted on Parks Canada Quttinirpaaq webpage	874 (194 IN, 612 EN, 68 FR)
Visits to online draft management plan	384 (12 IN, 344 EN, 28 FR)
Visits to online comment card	378 (84 IN, 228 EN, 66 FR)
Facebooks posts (on the Parks Canada, Nunavut page and local community groups)	5449 (2231 IN, 3654 EN, 95 FR)
TOTAL	7,085

The Quttinirpaaq Joint Park Management Committee will formally review and approve the revised draft management plan during the week of May 22, 2023.

What We Heard:

No substantive issues were raised in consultations. The majority of edits made to the plan as a result were editorial or minor in nature, namely to provide greater clarity to the reader:

- *Zoning:* Additional information on the meaning and purpose of each specific zone was added in the zoning section of the management plan (see Section 6.0 Zoning). This was mainly in response to several questions, especially from community members, about the meaning of zoning and the restrictions of each specific zone. While providing information about zoning, staff were clear to emphasize that zoning restrictions do not and will never apply to Inuit exercising rights-based activities in Quttinirpaaq or any of the Parks Canada sites in Nunavut. Nevertheless, it is important that the concept is well understood in order for Inuit and Parks Canada to effectively work together in protecting the lands within Quttinirpaaq, and also to promote the dissemination of accurate information to any Quttinirpaaq visitors who may be passing through Resolute and/or Grise Fiord.
- *Lake Hazen/Tasaliuk Basin Management Area:* Further to the above, many comments received from consultation related specifically to the new special management area

designation and shift from Zone I to Zone II in the Lake Hazen/Tasaliuk Basin Area. Language has been edited to emphasize that this change has been proposed in order to better consider opportunities for controlled research and small-scale visitation while continuing to ensure consistent and appropriate protection for such a special place. Objective 1 recognizes that future changes to the zoning of this area may be required if evidence shows negative impacts on the ecological and cultural resources of the area.

- *Connection with Youth:* Building and supporting further connections to the park, particularly for Inuit in adjacent communities, is an important theme embedded throughout the draft plan, and was a comment echoed throughout consultation conversations. Connecting and engaging with youth was especially highlighted as an audience that should be targeted, and minor edits have been made to the draft plan where appropriate to further highlight this priority (e.g., Target 3.1.1: “One outreach activity showcasing a story based on an understanding of Inuit Qaujimagatuqangit and science of Quttinirpaaq is available for staff to share and present within two years, *with a priority on youth audiences where possible*”).
- *International Value:* The immense international value of research conducted in Quttinirpaaq National Park - particularly studying the impacts of climate change - was highlighted by the research community in consultation exercises. Minor edits emphasizing the global importance of the park have been added where appropriate in balance with highlighting the local importance to adjacent communities.
- *Maps:* All maps have been reformatted to meet updated Parks Canada cartographic guidelines. Further, the zoning and inset maps (Map 3 in draft management plan), which previously existed as two separate figures, have been combined into one for clarity and ease of reference.

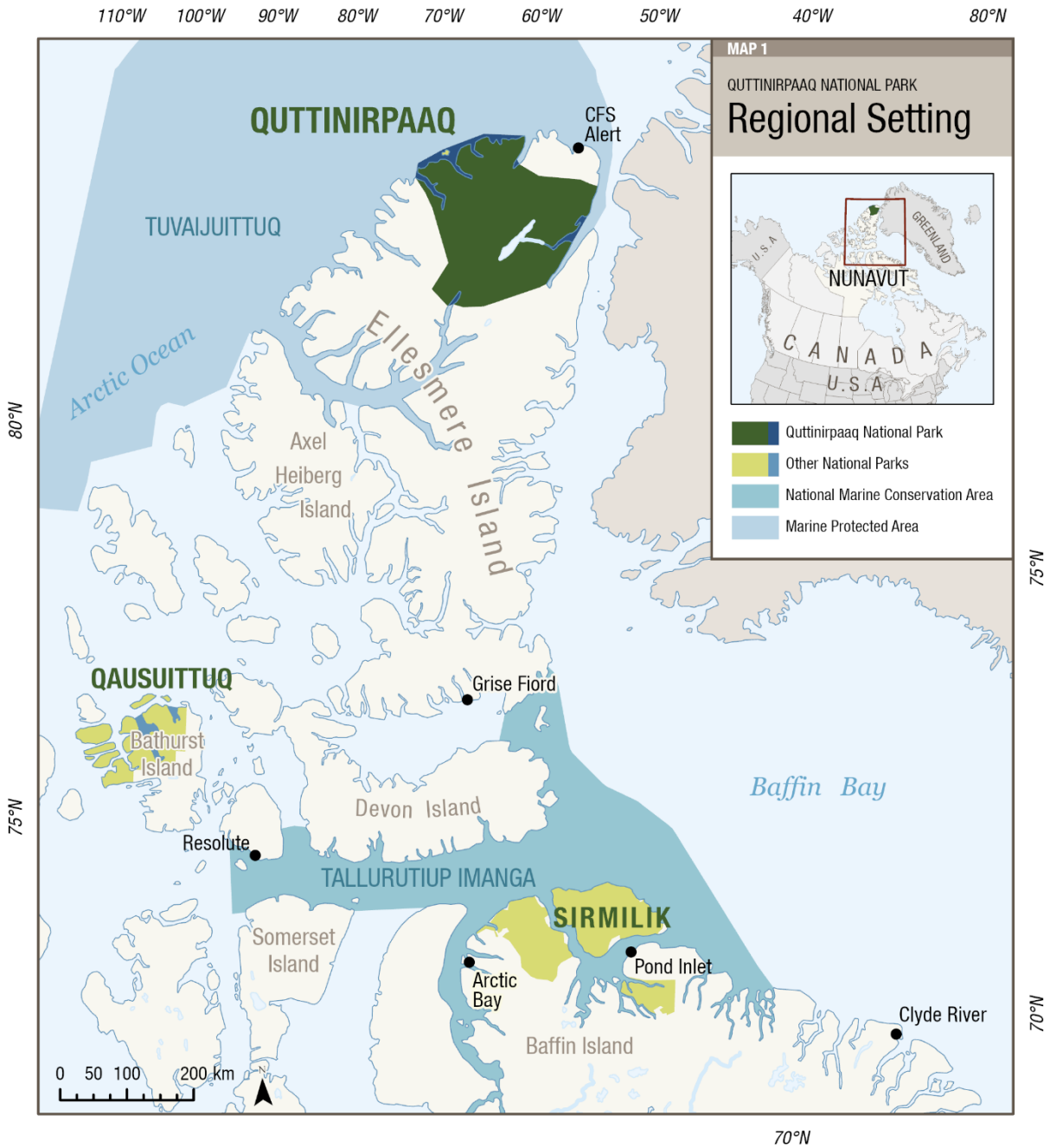
The Park Planning Team received many general questions and comments throughout the consultation process. While many were outside the scope of a management plan, they were recorded and are valued for the insight they offer into the interests and concerns of adjacent communities. Wherever possible, Parks Canada staff answered questions in real time to community members, which was an excellent relationship-building opportunity through knowledge sharing.

See Appendix B of the enclosed “What We Heard” summary document for more details.

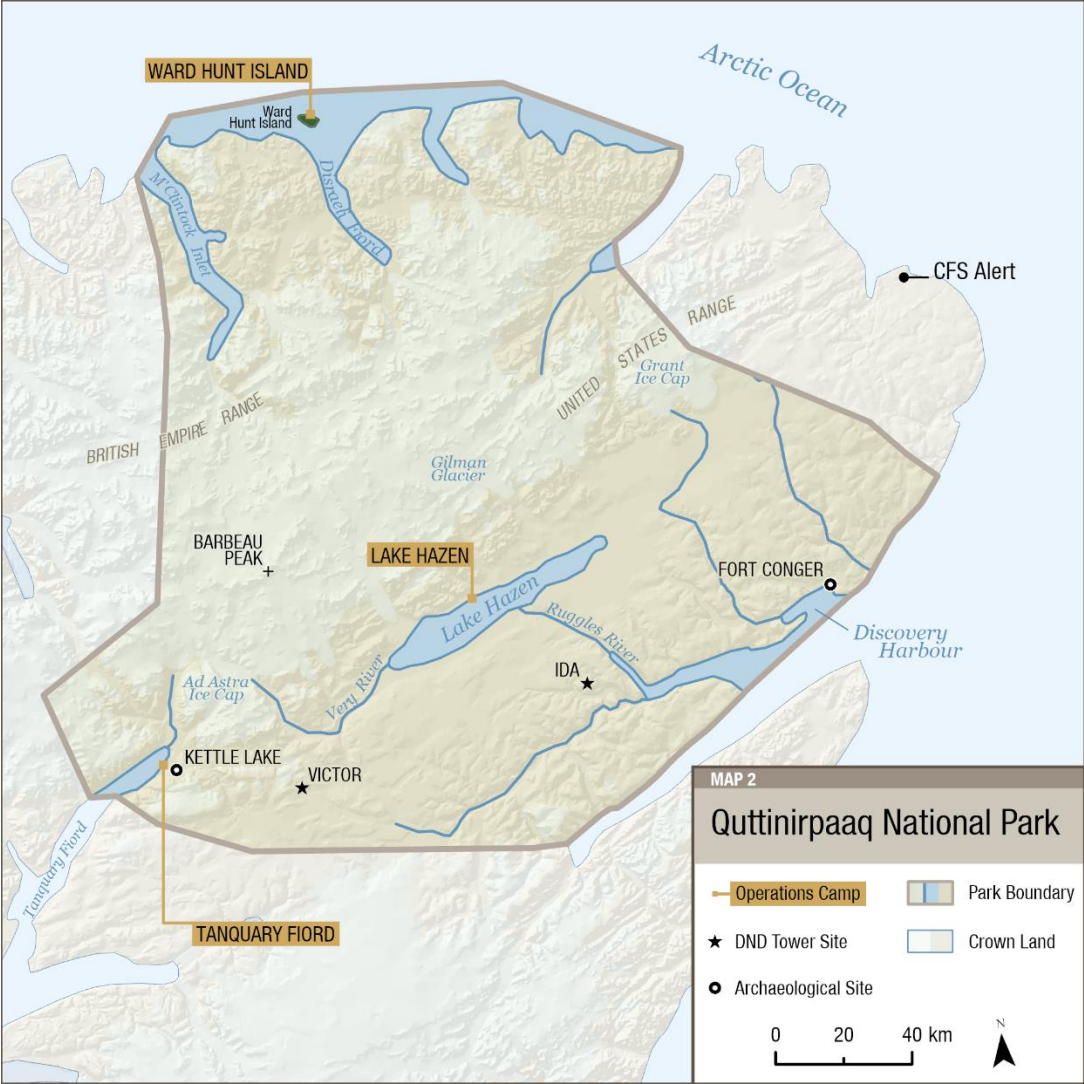
Prepared by:

Danika Guppy
Planner, Nunavut Field Unit
Parks Canada
danika.guppy@pc.gc.ca
867-975-4684

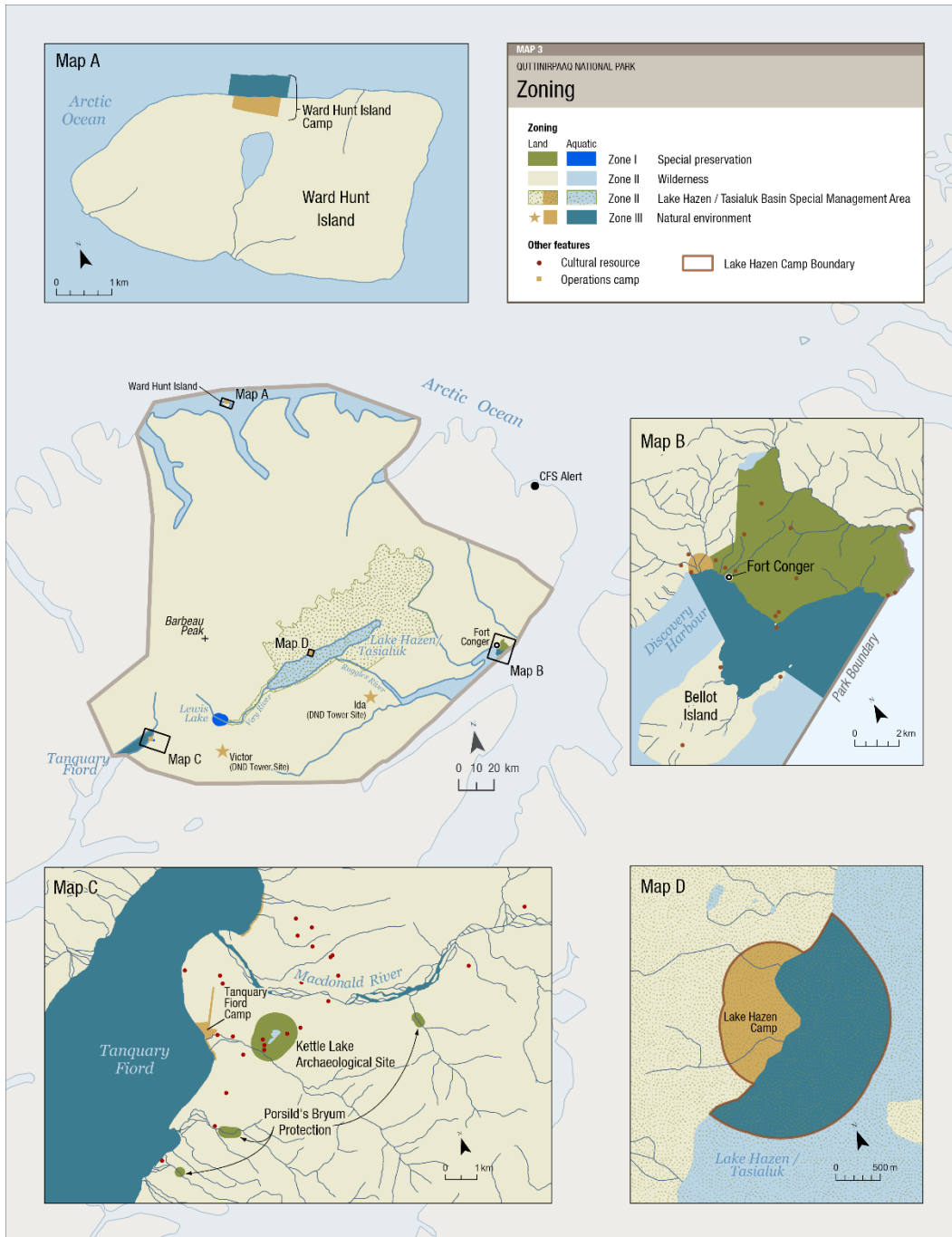
Date: May 5, 2023



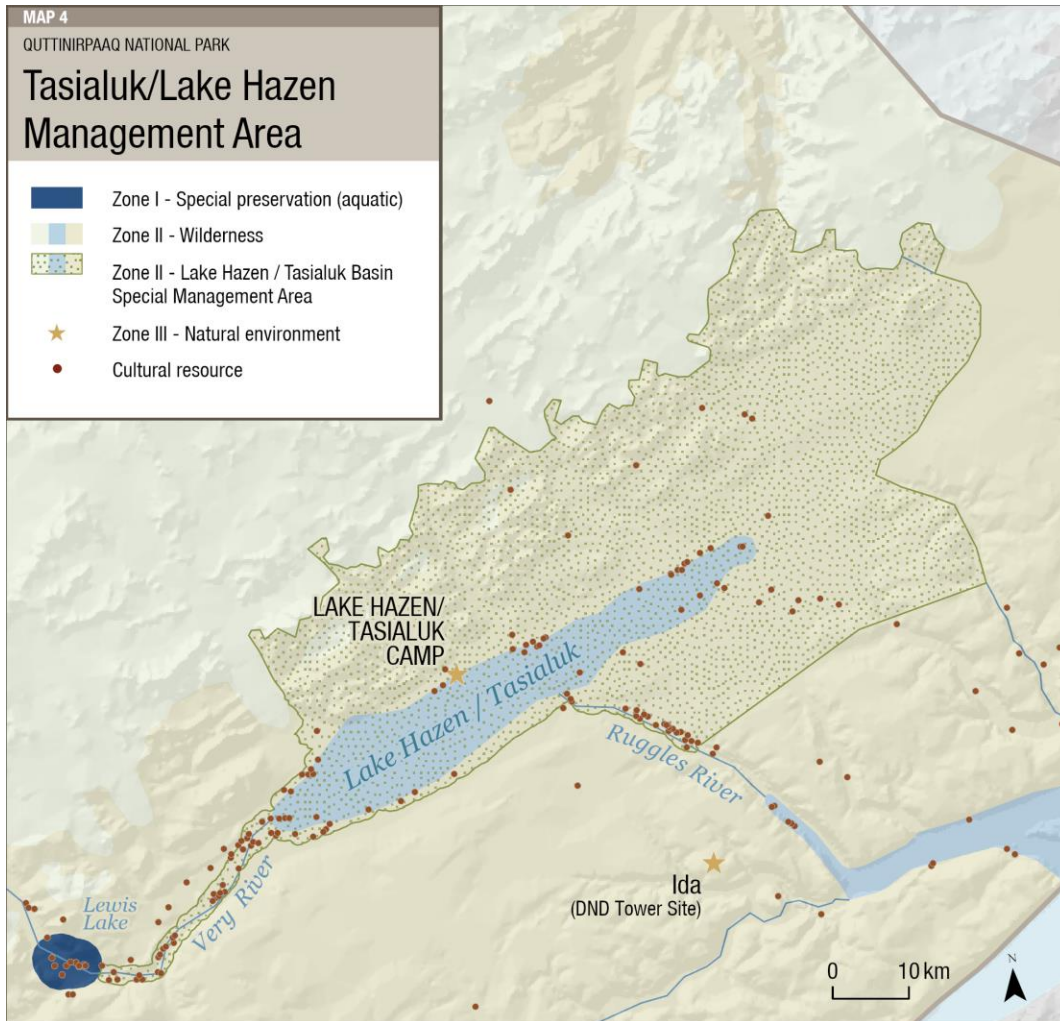
Map 1: Regional setting of Quttinirpaaq National Park. Other Parks Canada protected sites in the area include Qausuittuq National Park on northern Bathurst Island, and Tallurutiup Imanga National Marine Conservation Area. Tuvaijuittuq, which includes the marine waters off northern Ellesmere Island, is the first Marine Protected Area to be designated for interim protection by ministerial order under the *Oceans Act*, limiting human activities in the area for up to five years.



Map 2: Quttinirpaaq National Park boundary. Park operations camps at Tanquary Fiord, Lake Hazen, and Ward Hunt Island are highlighted.



Map 3: Quttinirpaaq National Park zoning. In accordance with the *Nunavut Agreement*, Zone II – Wilderness is the predominant designation of the park. Inset maps A, B, C, and D highlight specific zoning at Ward Hunt Island, Fort Conger, Tanquary Fiord, and Lake Hazen respectively.



Map 4: Tasialuk/Lake Hazen Management Area. The shift to Zone II offers a chance to specifically consider the challenges and opportunities of this special place. The Lake Hazen/Tasialuk Camp is a small Zone III area to facilitate base camp operations.