



NUNAVUT WILDLIFE MANAGEMENT BOARD

Agenda: Regular Meeting 002-2023

June 7, 2023

Iqaluit, Nunavut



	No:	Item:	Tab:	Presenter:	Maximum Time
9:00 - 9:02 AM	1	Open Meeting		Chairperson	2 Minutes
9:02 - 9:03 AM	2	Declaration of Conflict of Interest		Chairperson	1 Minute
9:03 - 9:05 AM	3	Agenda Review and Approval of RM002-2023 Meeting	1	Chairperson	2 Minutes
9:05 - 10:00 AM	4	Modification of Season-bridging Protocols for Nunavut and Nunavik Allocations in the Eastern Assessment Zone (Decision/Advice)	2	Fisheries and Oceans Canada	55 Minutes
BREAK					
10:15 - 11:00 AM	5	Total Allowable Catch level for Northern Shrimp (<i>Pandalus borealis</i>) in Shrimp Fishing Area 0 (Advice)	3	Fisheries and Oceans Canada	45 Minutes
11:00 - 11:30 AM	6	Fisheries Management Operation Updates (Information)	4	Fisheries and Oceans Canada	30 Minutes
11:30 - 12:00 PM	7	Southampton Island Area of Interest (Information)	5	Fisheries and Oceans Canada	30 Minutes
LUNCH					
1:30 - 2:00 PM	8	Tuvaijuittuq Marine Protected Area (Information)	6	Fisheries and Oceans Canada	30 Minutes
2:00 - 2:30 PM	9	Seeking Comments on the draft Policy Assessing Imminent Threats under Section 29 and 80 of the <i>Species at Risk Act</i> - Terrestrial Species (Information)	7	Environment and Climate Change Canada	30 Minutes

2:30 - 3:15 PM	10	To Seek Approval from the NWMB on the Aspects of the draft Quttinirpaaq National Park Management Plan that Concern Wildlife Management (Decision)	8	Parks Canada	45 Minutes
		Adjournment of RM002-2023 Meeting		Chairperson	

SUBMISSION TO THE
NUNAVUT WILDLIFE MANAGEMENT BOARD
AND NUNAVIK MARINE REGION WILDLIFE BOARD

FOR

Information:

Decision: X

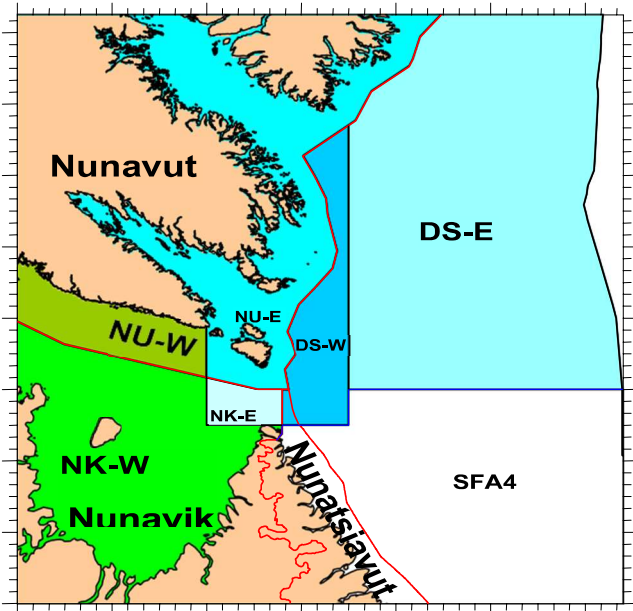
Recommendation: X

Issue: Modification of season-bridging protocols for Nunavut and Nunavik allocations in the Eastern Assessment Zone (EAZ)

Map:

Blue areas – Eastern Assessment Zone

Green areas – Western Assessment Zone



Northern shrimp (*Pandalus borealis*)



Striped shrimp (*Pandalus montagui*)

Background

Two shrimp species (*P. borealis* and *P. montagui*) occur in the Northern shrimp fishery that takes place in the Davis Strait and eastern Hudson Strait. This fishery is managed according to two distinct stock assessment zones, the Western Assessment Zone (WAZ) and the Eastern Assessment Zone (EAZ) (Appendix 1).

While allocations are provided annually for commercial fishing, season bridging of quota is regarded as a useful operational flexibility in the WAZ and EAZ shrimp fisheries that allows for additional opportunities to catch allocations in full, without compromising the sustainability of the resource. Season bridging is also available in southern Shrimp Fishing Areas.

Collectively, season bridging in the shrimp fisheries refers to 1) borrowing from the following year's quota to be fished in the current year; and 2) transferring some of the current year's unused quota to be caught in the following year (carry forward). Under the current bridging protocols in the EAZ (for *P. borealis*), up to 350t is available for carry forward for Nunavut allocations and 20t for Nunavik allocations, to be fished within the first 120 days (April 1 - July 31 of the following year) (Appendix 2). Quota that is not caught by this date will remain unfished.

In 2020, the Nunavik Marine Region Wildlife Board (NMRWB) and Nunavut Wildlife Management Board (NWMB) made decisions and recommendations, as appropriate, to maintain the existing season bridging protocols for Nunavut and Nunavik allocations within the WAZ and EAZ, until such time as Harvest Decision Rules (HDRs) are developed for these areas. DFO was in agreement that this extension of season bridging protocols was a constructive way forward while this work is ongoing.

Further in 2020, DFO committed to initiate discussions with the Boards regarding the possible reduction of carry-forward allowances for Nunavut and Nunavik allocations should the EAZ *P. borealis* stock enter the Cautious Zone. The 2022 survey indicated a third consecutive stock decline, such that the stock is now situated just above the midpoint of the Cautious Zone. A recommendation regarding carry-forward allowances for 2023-24 is outlined below.

The Department has received requests from industry to amend season bridging allowances for Nunavut and Nunavik allocations in the WAZ and EAZ, citing inequities among fishing fleets. DFO is actively considering these requests under the broader development of HDRs, and is not yet at a place to seek a decision from the Boards on this matter. DFO confirms that a dedicated resource has been hired to advance work on the development of HDRs in the WAZ and EAZ, beginning in May 2023.

More recently in March 2023, DFO received a request from the Canadian Association of Prawn Producers (CAPP) and the Northern Coalition, representing enterprise allocation holders in the Davis Strait, to extend the deadline for harvesting of carry-forward allowances in the EAZ from July 31 to August 31, in perpetuity. The same request for extension was made in a

submission from Baffin Fisheries Coalition to DFO in March 2023. Rationale provided by industry for the extension includes 1) limited ability to prosecute the fishery in the EAZ due to unfavorable ice conditions in some years; and 2) economic considerations whereby shrimp harvested later in the season (August) are typically of better quality and value.

Notably, DFO approved industry's request to extend the carry-forward harvest deadline in all EAZ management units in 2022 (due to unfavorable ice conditions that year). A recommendation regarding extension of this deadline in 2023 is outlined below.

Science Considerations

In past, the Total Allowable Catch (TAC) for *P. borealis* in the EAZ has not been fully taken. This is in part because ice conditions effectively end the fishing season before quotas can be fully prosecuted and because of minimal harvest of quotas in the Davis-Strait East management unit. While harvesting of carry-forward allowances potentially increases the exploitation rate in a given year, the increase would be minimal under current allowances for Nunavut and Nunavik allocations and the offshore fleet in Davis Strait; catches (including carry-forward) are not expected to exceed the TAC for bridged seasons. Further analysis would be required in order to assess the impact of any future changes to these allowances.

DFO Science notes that the deadline by which to harvest carry-forward allowances does not serve as an end to fishing activity (i.e. fishing does not cease at the deadline), but rather an administrative end after which catches must be reported against current year quotas. For this reason and on the basis that catches are not likely to exceed the TAC, extending the carry-forward harvest deadline does not present a conservation concern at this time.

Recommendation

Carry-forward allowances – Further to DFO's commitment from 2020, the Department has considered the appropriateness of reducing carry-forward allowances for Nunavut and Nunavik allocations in 2023-24, given the EAZ *P. borealis* stock has entered the Cautious Zone.

Since current carry-forward allowances are relatively small (350t for Nunavut; 20t for Nunavik), a partial reduction of these allowances in 2023-24 would not amount to substantial reduction in fishing pressure (i.e. would not significantly impact the potential exploitation rate). In the absence of a conservation concern, reducing carry-forward allowances for Nunavut and Nunavik allocations in 2023-24 is considered unnecessary to ensure stock sustainability. DFO recommends maintaining the current carry-forward allowances for Nunavut and Nunavik allocations for the 2023-24 fishing season.

Carry-forward harvest deadline- DFO considered the rationale provided by industry in its request to extend the deadline by which to harvest carry-forward allowances in the EAZ in 2023, from July 31 to August 31. A review of ice charts obtained from Environment and

Climate Change Canada suggests that ice conditions are not expected to be a limiting factor in accessibility of the EAZ in 2023.

In the absence of a conservation concern, DFO recommends to approve requests to extend the carry-forward harvest deadline from July 31 to August 31 for all EAZ management units, for 2023 only. DFO will examine the carry-forward harvest deadline as part of its review of season bridging protocols through the development of HDRs.

Summary of the request

DFO is seeking from the NWMB and NMRWB, for 2023-24:

- 1) Decisions on whether to maintain current carry-forward allowances for Nunavut (350t) and Nunavik (20t) EAZ *P. borealis* allocations, respectively, acknowledging the stock is in the Cautious Zone.
- 2) Decisions to extend the carry-forward harvest deadline for Nunavut and Nunavik *P. borealis* allocations in the Nunavut/Nunavik-East management units, from July 31 to August 31.
- 3) Recommendations to extend the carry-forward harvest deadline for Nunavut and Nunavik *P. borealis* allocations in the Davis Strait management units, from July 31 to August 31.

Prepared by: Courtney D'Aoust, Fisheries Resource Management, Fisheries and Oceans Canada

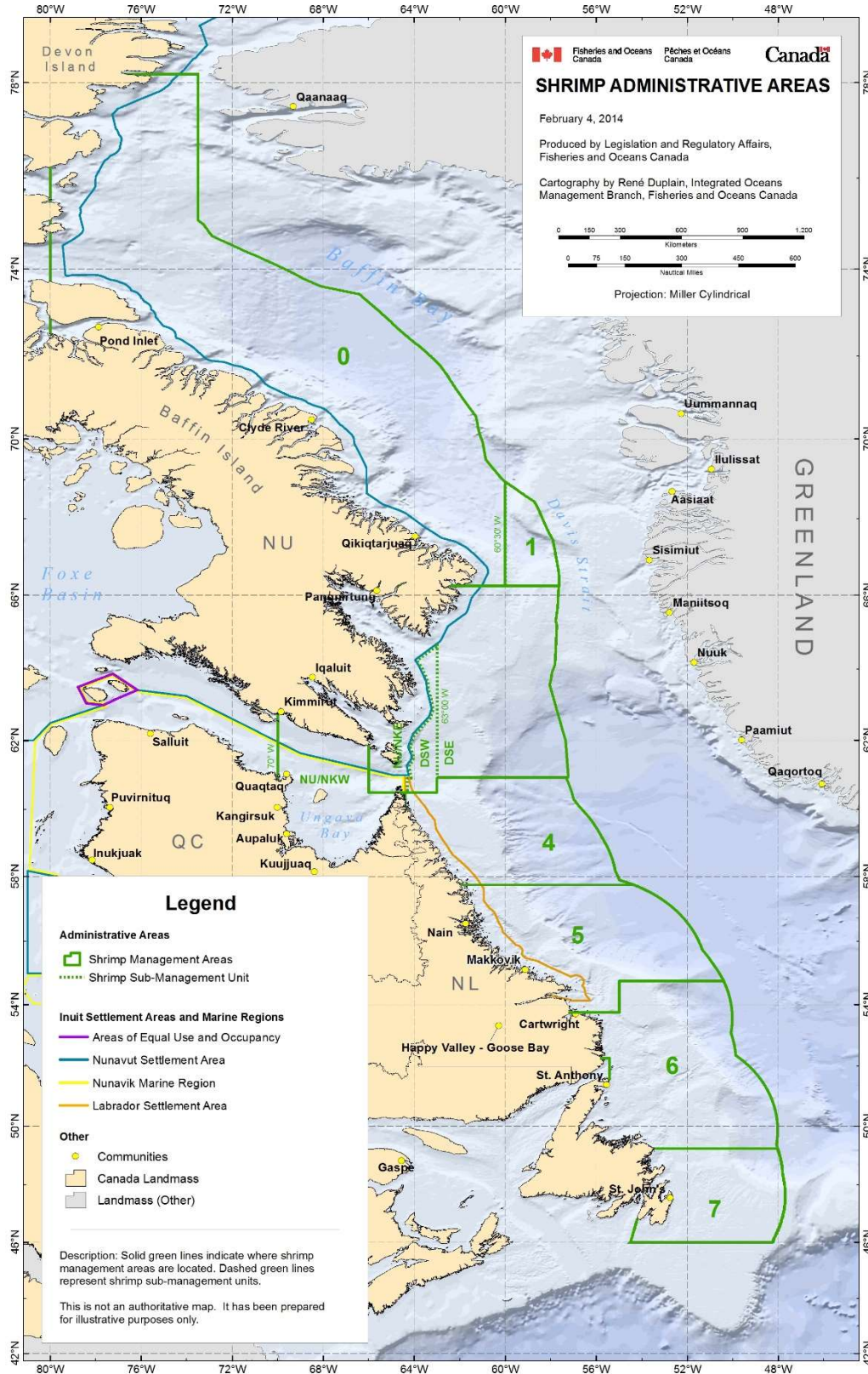
Date: May 5, 2023

Appendices

Appendix 1 – Map of shrimp administrative areas in Atlantic Canada

Appendix 2 – Season bridging protocols for NU and NK Allocations in the WAZ and EAZ

Appendix 1



Appendix 2

Season Bridging Protocol for NU and NK Allocations in the WAZ and EAZ

Carry Forward

WAZ (*P. montagui*)

The Department will make 800t available in the WAZ for carry forward to Nunavut and Nunavik allocation holders annually; sharing of this amount will be consistent with the sharing arrangement established by the Boards.

Currently, based on the 50/50 split, Nunavut and Nunavik will each be able to bridge a total of 400t each. Any carry forward quota not caught by September 30 of the following year will remain unfished.

EAZ - Davis Strait, NU/NK E (*P. borealis*)

350t will be available for carry forward for Nunavut and 20t for Nunavik allocations, to be fished by **July 31** of the following year. Quota that is not caught by this date will remain unfished.

Borrowing

WAZ (*P. montagui*)

Nunavut and Nunavik shall share a total of 550t annually for borrowing based on sharing arrangements established by the Boards, which is currently 275t each. Requests to borrow quota will be assessed by the Department on a case by case basis in consideration of ice and climate conditions.

EAZ - Davis Strait, NU/NK E (*P. borealis*)

Nunavut and Nunavik entities shall be allowed to borrow a total of 225t and 10t respectively from their following year's allocations, to be fished in the last month (March) of the current fishery.

Table 1. Nunavut and Nunavik allocations available for carry forward and borrow.

Area	Nunavik		Nunavut	
	Carry forward	Borrow	Carry forward	Borrow
WAZ <i>P. montagui</i>	400t	275t	400t	275t
WAZ <i>P. borealis</i>	N/A			
EAZ <i>P. montagui</i>	N/A			
EAZ <i>P. borealis</i> (Davis Strait NU/NK E)	20t	10t	350t	225t

**SUBMISSION TO THE
NUNAVUT WILDLIFE MANAGEMENT BOARD**

FOR

Information:

Decision:

Recommendation: X

Issue: 2023 Total Allowable Catch level for Northern Shrimp (*Pandalus borealis*) in Shrimp Fishing Area 0



Northern shrimp (*Pandalus borealis*)

Background

A competitive fishery for Northern shrimp (*Pandalus borealis*) exists in Shrimp Fishing Area (SFA) 0, located in Baffin Bay. SFA 0 is immediately adjacent to and partially within the Nunavut Settlement Area (NSA), however fishing is only permitted outside of the NSA (see map at Appendix 1).

The fishery in SFA 0 operates on a calendar year (January 1 – December 31). Harvesting activity, if any, would likely occur no earlier than June due to ice conditions.

The TAC in SFA 0 has been 500 t since 1996 with the exception of 2020, where an interim TAC of 250t was set with no final TAC decision. No catches have been recorded since the onset of this fishery. Nunavut fishing interests currently have access to the SFA 0 fishery via Qikiqtaaluk Corporation's offshore licence, and through their 50% ownership of the Unaaq offshore licence.

As this fishery occurs in waters adjacent to the NSA, the Department is seeking a recommendation from the NWMB on the 2023 Total Allowable Catch (TAC) for *P. borealis* in SFA 0.

In July 2022, the NWMB re-affirmed a previous recommendation to expand access to the competitive fishery to include enterprises that currently have Nunavut sub-allocations, namely: Arctic Fishery Alliance (AFA), Baffin Fisheries Coalition (BFC), Cumberland

Sound Fisheries Ltd. (CSFL), and Qikiqtaaluk Corporation (QC). It was expressed that expansion of this fishery to Nunavut enterprises would provide increased access and opportunity for fisheries development. No decision on expanded access was taken by the Minister in 2022 and the Department deems this recommendation to be still active.

Ahead of the 2023 management decision, DFO sought to clarify the intended area of application of the Board's 2022 recommendation. Following discussion with NWMB technical staff, DFO understands that this recommendation seeks to provide Nunavut sub-allocation holders (see above) access to the competitive fishery that occurs outside the NSA. The Minister will consider this recommendation, and any further views the Board may wish to provide on this matter, as part of management decisions for the 2023 fishing season.

Science Information

Regular stock assessment surveys for Northern shrimp are not conducted in SFA 0 as there has never been an active fishery in the area. SFA 0 was last assessed in 2010 based on surveys in 2006 and 2008 (Canadian Advisory Report 2010/024) (Summary in Appendix 2).

These surveys indicated that biomass indices were low. The fishable biomass index was 750 t (2006) and 1,100 t (2008) with female spawning stock biomass index of 580 t (2006) and 800 t (2008). Based on the biomass indices from 2006 and 2008, if the historic 500t competitive TAC were set and fully taken in 2023, the potential exploitation rate would be high (66.7 per cent and 45.4 per cent, respective of the fishable biomass index considered).

With only two surveys, no biomass trends can be determined and current biomass levels and recruitment status are unknown. The area is not currently fished and based on the observed biomass, future prospects for a fishery are limited. As there have been no surveys targeting SFA 0 for 15 years, the Department may consider a request for a scientific survey in the coming years. However, such a request would be considered in the context of a number of other departmental priorities in regards to science research.

Consultation

The Department sought views on the SFA 0 TAC for 2023, including views on the approach to establish a multi-year TAC, from members of the Northern Shrimp Advisory Committee with interest in the fishery. At the time of this submission, the Canadian Association of Prawn Producers, representing 10 of 17 offshore licence holders with access to the competitive fishery, stated support of a one year TAC of 500t for 2023.

Recommendation

In the absence of an annual science survey, and given that no fishing has ever occurred in this area, the Department is considering a multi-year approach to setting the TAC in SFA 0. A multi-year TAC would help to reduce administrative burden, with no anticipated impact on fishery operations. As such, it is recommended that the competitive TAC for Northern shrimp (*P. borealis*) in SFA 0 be rolled over at 500 t on a two-year basis, for both the 2023 and 2024

fishing seasons.

Summary of Request

DFO is requesting from the Board:

- 1) Recommendation on the competitive TAC for Northern Shrimp (*P. borealis*) in SFA 0 fishable outside the NSA for 2023, including the option to implement a multi-year TAC for two or more years.

The Department also offers this opportunity for the Board to re-affirm, or comment further on its previous recommendation regarding expanded access in SFA 0 to Nunavut enterprises for 2023.

Prepared by: Courtney D’Aoust, Fisheries Resource Management, Fisheries and Oceans Canada

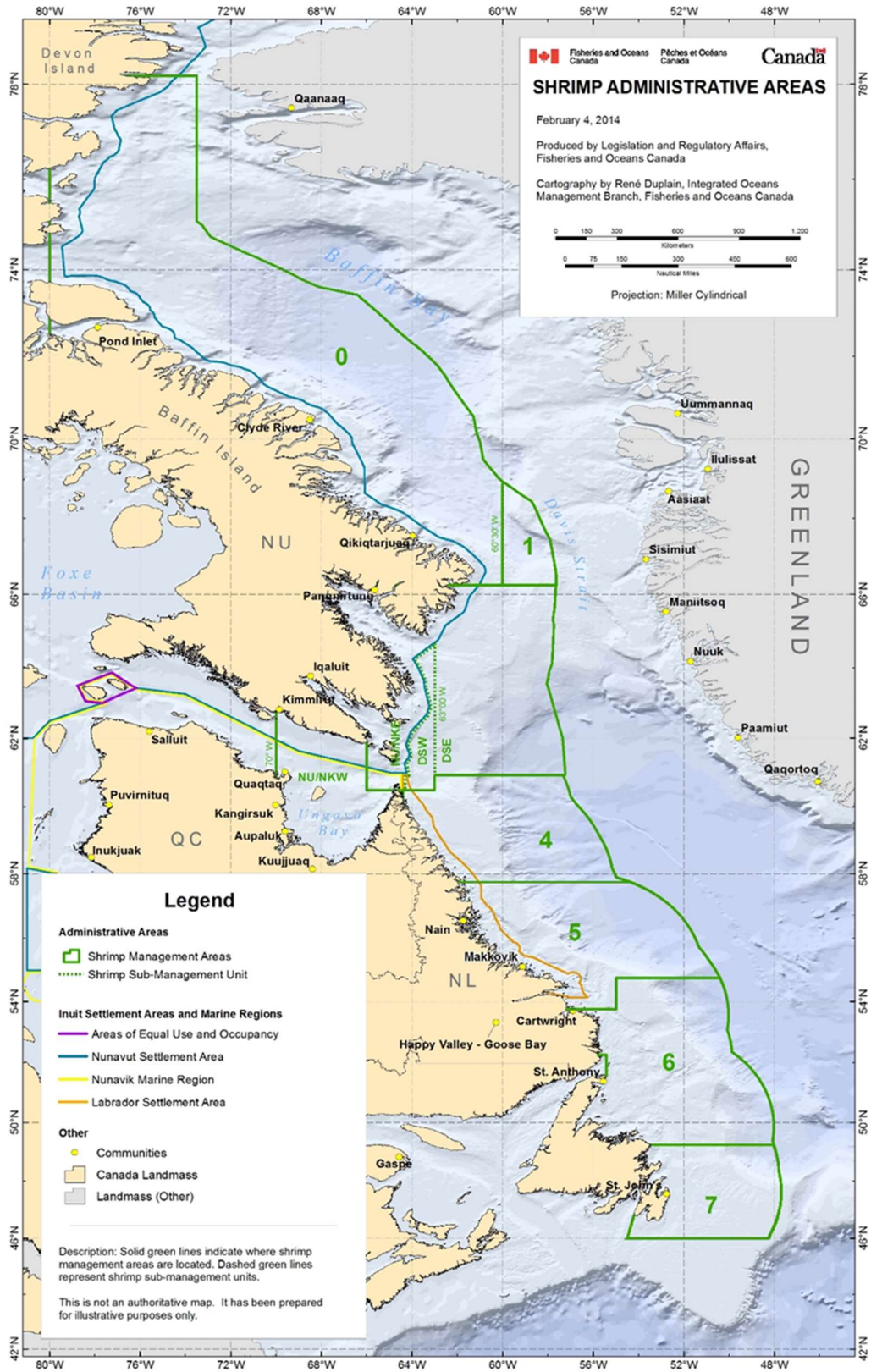
Date: May 5, 2023

Appendices

Appendix 1 – Map of groundfish and shrimp administrative areas in Atlantic Canada (including Shrimp Fishing Area 0)

Appendix 2 – Summary: Assessment of Northern Shrimp (*Pandalus borealis*) in SFA 0, 2, 3 and Striped Shrimp (*Pandalus montagui*) in SFA 2, 3 and 4 west of 63°W (Science Advisory Report 2010/024)

APPENDIX 1



APPENDIX 2

Science Advisory Report 2010/024

SUMMARY: Assessment of Northern Shrimp (*Pandalus borealis*) in SFA 0, 2, 3 and Striped Shrimp (*Pandalus montagui*) in SFA 2, 3 and 4 west of 63°W

SFA 0 – *Pandalus borealis*

Fishery

- No fishery in recent years.

Biomass

- Resource status is based on two surveys conducted in 2006 and 2008.
- Fishable biomass index was 750 t (2006) and 1,100 t (2008).
- Female spawning stock biomass index was 580 t (2006) and 800 t (2008).

Recruitment

- Recruitment is uncertain.

Mortality

- Competitive TAC of 500 t could result in a potential exploitation rate index of 40%-70% based on the observed biomass. A lower TAC is recommended.

Current Outlook and Future Prospects

- Future prospects for a fishery are limited.
- There are no plans for future surveys in this area.

SUBMISSION TO THE
NUNAVUT WILDLIFE MANAGEMENT BOARD
JUNE 2023

FOR

Information: X

Recommendation:

Decision:

Issue: Department of Fisheries and Oceans Canada – Fisheries Management Operational Updates

Updates:

Marine Mammals:

1) Narwhal

- On December 1, 2022, the Qikiqtaaluk Wildlife Board, the Ikajutit Hunter and Trappers Association (HTA), the Mittimatalik HTA, the Nangmautaq HTA, and the Nattivak HTA initiated a judicial review of Fisheries and Oceans Canada's (DFO) application of 2021/22 narwhal season dates and allocations to the 2022/23 harvest year.
- While the judicial review proceedings are ongoing, the Nunavut Narwhal Working Group continues to work on its review and update of the *Integrated Fisheries Management Plan (IFMP) for Narwhal in the Nunavut Settlement Area*. A Narwhal Working Group meeting was held on March 15th and the next meeting is planned for May 4th pending availability of Working Group members.
- The 2022/23 narwhal harvest season ended on March 31, 2023. DFO has contacted all Hunters and Trappers Organizations/Associations (HTOs/HTAs) and Government of Nunavut (GN) Wildlife Office staff requesting that 2022/23 narwhal tags be returned to DFO. Carry-over allocations cannot be finalised until the harvest information from the previous season is returned and analysed by DFO.
- Narwhal tags and information packages for the 2023/24 harvest season are currently being prepared. DFO has recently requested decisions on community allocations from Regional Wildlife Organizations (RWOs) including carry-over numbers. Once the allocation decisions have been confirmed, the 2023/24 tags will be distributed to communities.
- Based on feedback from the Ikajutit, Mittimatalik, Nangmautaq, and Nattivak HTAs, the same season dates and allocations from 2022/23 have been applied to the 2023/24 narwhal harvest season for the communities of Arctic Bay, Pond Inlet, Clyde River, and Qikiqtarjuaq.

2) Walrus

- DFO's Minister accepted the Nunavut Wildlife Management Board (NWMB) decision to approve a total of 152 walrus sport hunts for 2023 (Coral Harbour 51, Arviat 4, Igloodik 12, Pond Inlet 6, and Sanirajak 79), subject to the conditions set out in the NWMB's decision letter.
- All walrus sport hunt outfitters have been notified of their successful applications, and DFO will continue to work with outfitters over the next several months to ensure all necessary documentation is received prior to issuing licences and sample kits.
- Following the NWMB's notification in January 2023 that they are discontinuing their interim walrus sport hunt policy, the Nunavut Walrus Working Group continues to collaborate on development of an updated process for the walrus sport hunt to ensure continued sustainable harvesting. The Walrus Working Group most recently met on April 25th to continue these discussions.

3) Beluga

- The Cumberland Sound Beluga Working Group (CSB-WG) continues to meet regularly throughout the year. The CSB-WG last met in Iqaluit in March 2023, and the next meeting is currently scheduled for June 28th in Pangnirtung.
- The genetic population structure of beluga whales in Cumberland Sound was assessed and reviewed at a Canadian Science Advisory Secretariat (CSAS) peer review process in October 2022 and [published online in December 2022](#).
- Collaborative research between DFO Science and the Pangnirtung HTA is ongoing and planning is underway for summer 2023 fieldwork.
- As was done in 2022, DFO Fisheries Management and Science will fund Cumberland Sound Beluga hunt monitoring and sample coordinators to assist the Pangnirtung HTA in monitoring the 2023 beluga hunt.

4) Bowhead

- DFO is aware of a few communities that are interested in hosting a bowhead hunt in 2023 and is awaiting formal advisory of host communities from all three RWOs. Once host communities have been selected, DFO will work with communities on receipt of required information and licence issuance.
- DFO Fisheries Management (FM) is finalizing marine mammal work plans for the coming year, and a request has been submitted to resume bowhead co-management planning. If approved, FM staff in Winnipeg will contact Bowhead Working Group members about suitable meeting dates in 2023 to advance development of a draft IFMP for decision by the NWMB and the Nunavik Marine Region Wildlife Board.

5) Harvest Reporting

- Staff from the Iqaluit DFO office recently contacted all HTOs/HTAs and GN Wildlife Office staff requesting final 2022/23 harvest updates for beluga, walrus, and narwhal. Reports of total marine mammal hunting mortality (landed and lost) are essential to develop reliable advice on sustainable harvests.
- DFO urges continued reporting of unusual marine mammal occurrences and events for follow up by co-management organizations, such as beached carcass and ice entrapments.
- Timely and accurate reporting is required under the *Fisheries Act*, *Marine Mammal Regulations*, and the *Nunavut Agreement*. It is strongly recommended that co-management organizations emphasize the importance of harvest reporting and monitoring.

Arctic Char

- The Kitikmeot Arctic char workshop planned by DFO for January 2023 was postponed and is now being planned for January 2024. The goal of the workshop is to discuss regional fishery priorities/concerns and research interests with Kitikmeot HTOs and co-management organizations.
- DFO hosted a Kivalliq Arctic char workshop in March 2023 in Rankin Inlet with attendees from Kivalliq HTOs, the GN, the Kivalliq Wildlife Board, and others. Updates included past community sampling programs, discussion of research and fishery priorities, and identification of management concerns for each community in the region. A meeting summary will be developed and distributed to meeting attendees and co-management partners in the near future.
- The Cambridge Bay Arctic Char IFMP Working Group is planning to meet in May 2023 for its annual IFMP review, the 2022 post-season fishing meeting, and the 2023 pre-season fishing meeting.
- DFO is in the process of consolidating and finalizing 2022/23 harvest information for Arctic char fisheries across Nunavut in collaboration with fishers, fish plants, and country food stores.

Greenland Halibut (Turbot):

- The 2023 Cumberland Sound winter turbot fishery opened on January 30th, following a pre-season public meeting in Pangnirtung.
- DFO received requests from Baffin Fisheries Coalition (BFC) and the Pangnirtung Fisheries Ltd/Cumberland Sound Fisheries Ltd (PFL/CSFL) partnership with support from the Pangnirtung HTA to carry over unused 2022 turbot quota into 2023. NWMB staff confirmed support of a carry-forward consistent with the *Quota Carry-Forward Guidelines for Atlantic Canada*. On

March 23rd, DFO notified the Pangnirtung HTA and PFL/CSFL of the approval to carry forward 75 t. The total amount of turbot that can be harvested in the CSTMA in 2023 is thus 575 t.

- The 2023 Cumberland Sound winter turbot fishery closed on April 10th. More than 85 fishers signed up under the HTA's licence to participate in the fishery and landed 550 t of turbot (round weight). This leaves 25 t available for harvesting in the summer of 2023.

Prepared by: Fisheries Management, Arctic Region – Fisheries & Oceans Canada

Date: April 27, 2023

Submission to the Nunavut Wildlife Management Board

June 2023

FOR

Information : X

Decision:

Issue: Fisheries and Oceans Canada (DFO) Update – Southampton Island Area of Interest

Background

DFO and the Kivalliq Inuit Association (KIA) have partnered to advance the Southampton Island Area of Interest for potential designation as a new *Oceans Act* Marine Protected Area. The Southampton Island Area of Interest encompasses the nearshore ocean around Southampton Island and Chesterfield Inlet in the Kivalliq Region of Nunavut. The final boundary of a potential future Marine Protected Area will be based on assessments and consultation.

Current Status

- The Southampton Island Area of Interest Co-Development Committee met most recently in October 2022, to provide input on the process to consider a Marine Protected Area. The Co-Development Committee has representation from Aiviit and Aqigiq Hunters and Trappers Organizations, Irniurviit Co-Management Committee, Government of Nunavut, KIA, and DFO. This year the plan is to supplement in person meetings with virtual meetings, so the committee can meet more frequently.
- DFO is working towards finalizing various assessment reports, including the Inuit Qaujimagatuqangit Workshop Report, the Socioeconomic Overview Report, and Resource Assessment. An ecological overview report and spatial analysis of vessel traffic are completed.
- An Ecological Risk Assessment has been written for the Area of Interest. A DFO Canadian Science Advisory Secretariat (CSAS) meeting was held in November 2022, and a local experts' meeting was held in March 2023, to review this assessment.
- In the coming year, partners will be further refining conservation objectives, and developing regulatory intent.
- DFO will continue to engage with partners and stakeholders throughout the Marine Protected Area establishment process.

Prepared by: Andrew Tucker, Arctic Region – Fisheries and Oceans Canada, Marine Planning and Conservation Program

Date: April 27, 2023

Submission to the Nunavut Wildlife Management Board

June 2023

FOR

Information : X

Decision:

Issue: Fisheries and Oceans Canada (DFO) Update – Tuvaijuittuq Marine Protected Area

Background

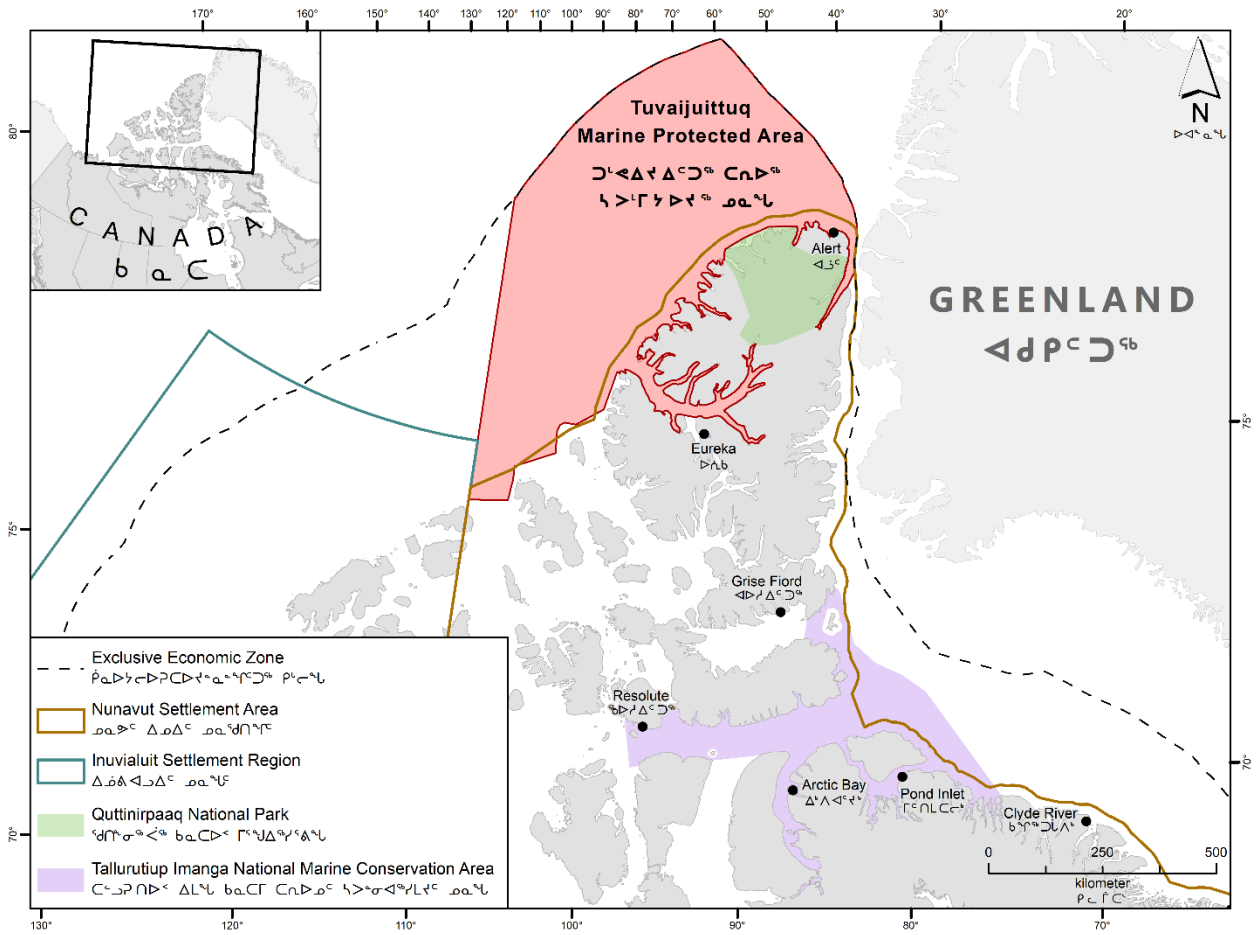
DFO, Parks Canada Agency, the Qikiqtani Inuit Association, and the Government of Nunavut have partnered to advance a feasibility assessment to consider long-term protection in Tuvaijuittuq. Tuvaijuittuq is located north of Ellesmere Island, contains the oldest and thickest multi-year sea ice in Canada's Arctic and is projected to become a critical refuge for ice-associated species into the future. The area was protected by a 5-year Ministerial Order Marine Protected Area (MPA) under the *Oceans Act* in 2019 to provide partners time to complete the feasibility assessment and establish a long-term protection measure if recommended.

Current Status

- In January 2023, the Qikiqtani Inuit Association formally requested that the current Ministerial Order MPA in Tuvaijuittuq be repealed and replaced with a new Ministerial Order MPA to help recover the time lost due to unforeseen pandemic challenges and to allow partners time to jointly explore an Indigenous Protected and Conserved Area in Tuvaijuittuq.
- In March 2023, the Minister agreed to pursue the continued protection of the area via a second Ministerial Order MPA. This approach will ensure continued protection of Tuvaijuittuq for up to 5 years while partners continue to consult with communities and stakeholders and pursue an Indigenous Protected and Conserved Area.
- DFO's intent is to designate the new Ministerial Order MPA in Summer 2024. The regulation currently in place in Tuvaijuittuq will remain the same, i.e., activities that have occurred or are approved to occur will be allowed to continue, and any new activities that may disturb, damage, destroy or remove key habitat, features, or organisms, will be prohibited, with some exceptions based on Canada's international commitments such as the United Nations Convention on the Law of the Sea (UNCLOS).
- The Tuvaijuittuq Working Group, with members from all parties are in the process of seeking input on this proposal from the communities of Arctic Bay, Clyde River, Grise Fiord, Pond Inlet and Resolute Bay, and will be seeking stakeholder input in early summer.
- A formal submission of the proposal for NWMB review and approval is anticipated in March 2024 following the public comment period (Canada Gazette I).

Prepared by: Chandra Chambers, Arctic Region – Fisheries and Oceans Canada, Marine Planning and Conservation Program

Date: April 28, 2023



ᑕᓐᑲᓐᑲᓐᑲᓐ ᑲᓐ ᑲᓐᑲᓐᑲᓐ ᑲᓐᑲᓐᑲᓐ ᑲᓐᑲᓐᑲᓐ

Map of Tuvaijuittuq MPA by Ministerial Order



Submission to the Nunavut Wildlife Management Board
For

Information: X

Decision:

Issue

Environment and Climate Change Canada is seeking comments on the draft Policy on Assessing Imminent Threats under Sections 29 and 80 of the *Species at Risk Act* – terrestrial species.

Background

- The *Species at Risk Act (SARA)* includes two emergency provisions: emergency listing and emergency orders. The Act intends for these tools to be used as a last resort, notably in situations where the Minister has determined that a wildlife species is facing imminent threat(s) to survival (emergency listing under section 29) or to survival or recovery (emergency order under section 80).
- These tools have been used infrequently. To date, there has been one emergency listing (the Little Brown Myotis, Northern Myotis and the Tri-colored Bat (2014); and three emergency orders (Greater Sage Grouse in AB/SK and two for Western Chorus Frog in Quebec).
- ECCC, in collaboration with Parks Canada, has developed a policy to assist the Minister in his decision-making under these two emergency provisions.
- The policy's purpose is to provide consistency in the interpretation of imminent threat(s) to the survival (under section 29) and to recovery or survival (under section 80) of a terrestrial wildlife species under SARA. The draft policy has been used to guide past imminent threat assessments, including for southern mountain caribou and wood bison.
- ECCC can undertake an imminent threat assessment when the minister of the environment is in possession of sufficient and credible information upon which to make an assessment of the imminent threat(s) facing the recovery and/or survival of a wildlife species.
- Imminent threat is considered on a case-by-case basis, based on the nature of the threat(s) and biological species needs. The threats could be new, emerging, or intensifying.

Consultation

The [draft policy](#) has been posted on the SARA Registry for a 60-day public consultation period. Feedback from our co-management partners will be invaluable to help inform the finalization of the policy.



As such, we are seeking feedback from all Hunter and Trapper Organizations, Regional Wildlife Boards, Regional Inuit Associations, Nunavut Tunngavik Incorporated, communities/hamlets, Government of Nunavut, and NWMB board staff.

In particular, we are seeking feedback as it relates to proposed consultation, engagement and collaboration with co-management partners, including the inclusion of Inuit Qaujimajatuqangit in assessments and imminent threat assessments.

How long is it out for consultation and what was sent for consultation.

The policy comment period is open until June 30, 2023, however, ECCC will accept comments after the deadline, to ensure co-management partners have sufficient time to provide feedback.

Next steps

Comments will be reviewed and considered as we finalize the policy documents. Once the policy is finalized, approval of the Minister will be sought before posting as final on the SAR Public Registry. At this point ECCC envisions that the final ITA policy to be published in fall 2023.



Policy on Assessing Imminent Threats under Sections 29 and 80 of the *Species at Risk Act* – terrestrial species



Cat. No.: xxx
ISBN: xxx

Unless otherwise specified, you may not reproduce materials in this publication, in whole or in part, for the purposes of commercial redistribution without prior written permission from Environment and Climate Change Canada's copyright administrator. To obtain permission to reproduce Government of Canada materials for commercial purposes, apply for Crown Copyright Clearance by contacting:

Environment and Climate Change Canada
Public Inquiries Centre
12th Floor, Fontaine Building
200 Sacré-Coeur Boulevard
Gatineau QC K1A 0H3
Telephone: 819-938-3860
Toll Free: 1-800-668-6767 (in Canada only)
Email: ec.enviroinfo.ec@canada.ca

Photos: © Environment and Climate Change Canada

© His Majesty the King in Right of Canada, represented by
the Minister of Environment and Climate Change, 2023

Aussi disponible en français

Table of Contents

- 1. Preface..... 4
- 2. Policy Objective 4
- 3. Policy Statement..... 4
- 4. Application 4
- 5. Federal Legislative Context..... 5
- 6. Principles..... 5
- 7. Policy Interpretation 6
- 8. Imminent Threat Assessment 6
- 9. Measures to Address the Imminent Threat 8
- 10. Re-assessment to Inform the Repeal of an Emergency Order 9
- 11. Monitoring and Reporting 9
- 12. Additional Information..... 9

DRAFT

1. Preface

In Canada, the protection and recovery of species at risk is a shared responsibility between the provinces and the territories, and the federal government. The *Species at Risk Act* (SARA; “the Act”) provides the federal government with the statutory tools and authorities to play an appropriate role in the protection and recovery of species at risk across the country. The purposes of the SARA are to: 1) prevent wildlife species from being extirpated or becoming extinct; 2) provide for the recovery of wildlife species that are extirpated, endangered, or threatened as a result of human activity; and 3) manage species of special concern to prevent them from becoming endangered or threatened.

The Act includes specific tools that enable emergency intervention in exceptional circumstances where a wildlife species’ conservation status may warrant more immediate action than what can be provided through the standard SARA process and measures. Specifically, the Act includes two emergency provisions: emergency listing and emergency orders. The Act intends for these tools to be used as a last resort, notably in situations where the Minister has determined that a wildlife species is facing imminent threat(s) to survival (emergency listing under section 29) or to survival or recovery (emergency order under section 80).

2. Policy Objective

The objective of this policy is to provide consistency in the interpretation of imminent threat(s) to the survival (under section 29) and to recovery or survival (under section 80) of a terrestrial wildlife species under SARA.

3. Policy Statement

A terrestrial wildlife species will be determined to be facing imminent threat(s) to its survival or recovery if the threat(s) identified would render its survival or recovery highly unlikely or impossible and cannot be eliminated or mitigated without immediate intervention.

A terrestrial wildlife species will be determined to no longer be facing imminent threat(s) to its survival or recovery if the threat(s) that led to the imminent threat finding are no longer present, or the threat(s) no longer renders the survival or recovery of the species highly unlikely or impossible.

4. Application

This policy applies to terrestrial wildlife species under the responsibility of the Minister of Environment and Climate Change and/or the Minister responsible for the Parks Canada Agency and replaces previous draft policies or guidance regarding the emergency provisions of SARA.

This policy does not apply to how the Committee on the Status of Endangered Wildlife in Canada (COSEWIC) may undertake an assessment as per section 28 of the Act.

5. Federal Legislative Context

Emergency Listing

SARA provides that, if the Minister of Environment and Climate Change (the Minister) forms the opinion that a wildlife species is facing imminent threat(s) to its survival, they must, after consultation with every other competent minister, recommend to the Governor in Council that the wildlife species be added to Schedule 1 as endangered on an emergency basis.

Emergency Protection

SARA also provides that if the competent minister is of the opinion that a listed wildlife species faces imminent threat(s) to its survival or recovery, they must, after consultation with all other competent minister(s), recommend to the Governor in Council the making of an emergency order to provide for the protection of the wildlife species; unless they are of the opinion that equivalent measures have been taken under another Act of Parliament.

Repealing an Emergency Order

SARA does not prescribe a duration for an emergency order. However, it does prescribe that if the competent minister is of the opinion that the wildlife species to which the emergency order relates would no longer face imminent threat(s) to its survival or recovery, even if the order were repealed, the competent minister must make a recommendation to the Governor in Council that the order be repealed.

6. Principles

Precautionary Principle

As set out in the preamble of SARA, the Minister's opinion is to be guided by the principle that, if there are threats of serious or irreversible damage to a wildlife species, cost-effective measures to prevent the reduction or loss of the wildlife species should not be postponed for a lack of full scientific certainty.

Best-available information

In making their opinion, the Minister will use the best-available information, including scientific information and Indigenous and community knowledge.

Honour of the Crown

The federal government will uphold the Honour of the Crown as well as asserted or established Aboriginal and Treaty Rights, and to the extent possible, aim to avoid, minimize, or otherwise accommodate potential impacts when exercising authorities under the relevant sections of SARA related to Emergency Listings or Emergency Orders. Where appropriate,

accommodations will be completed in accordance with the Crown's Duty to Consult and Accommodate.

7. Policy Interpretation

Imminent threat is a fundamental concept associated with the application of authorities for emergency listing and to inform the making or repealing of an emergency order under SARA. Key interpretations include:

Threats

The human activities or processes that have caused, are causing, or may cause the destruction, degradation, and/or impairment of the entity being assessed (population, species, community, or ecosystem) in the area of interest (global, national, or subnational).¹

Imminent

Whether a particular threat is "imminent" is assessed on a case-by-case basis, guided by the considerations outlined in section 8, taking into account the nature of the threat(s) and biological considerations related to the wildlife species and its habitat.

Recovery and Survival

Recovery and survival are interpreted as per the [Policy on Recovery and Survival](#). According to the *Policy on Recovery and Survival*, the focus of recovery is to address the increased risk to a wildlife species resulting from human activity and threats that may jeopardize the achievement of population and distribution objectives outlined in the wildlife species' recovery strategy or action plan. If a recovery strategy or action plan has not yet been prepared, the best-available information is used to determine the population and distribution objectives and what would constitute recovery for a given wildlife species.

The focus of survival is the consideration of what a species needs to persist in the long term.

Other Definitions

Definitions found in section 2 of SARA apply to where the terms are used in this document.

8. Imminent Threat Assessment

Imminent threat assessment is a tool to support the application of authorities for emergency listing and emergency protection under SARA. An imminent threat assessment can inform the making of an opinion by helping to, for example, clarify the state of the best-available

¹ Adapted from Salafsky, N., D. Salzer, A.J. Stattersfield, C. Hilton-Taylor, R. Neugarten, S.H.M. Butchart, B. Collen, N. Cox, L.L. Master, S. O'Connor, and D. Wilkie. 2008. A standard lexicon for biodiversity conservation: unified classifications of threats and actions. *Conserv. Biol.* 22:897–911.

information and knowledge of a species, the source of the threats it faces, and explores their impacts.

An imminent threat assessment can be initiated when the department of the competent minister is in possession of sufficient and credible information upon which to make an assessment of the imminent threat(s) facing the recovery and/or survival of a wildlife species. The Department will also consider the nature of the situation and the need to provide timely, well-informed advice to the competent minister, consistent with a precautionary approach.

Information

The information upon which an imminent threat assessment is based should consist of best-available information on:

- The species' biology and ecological needs
- The specific nature of the threat(s) the species is facing
- The likelihood and timing of those threats
- The impacts of those threat(s) on the species.

This information can originate from various sources, including:

- A COSEWIC emergency assessment
- Recovery documents
- Scientific publications
- Unpublished scientific data or analysis
- Indigenous knowledge
- Community knowledge

Consultations

SARA requires that the competent minister consult with every other competent minister for the wildlife species when forming an opinion. In addition, and to the extent possible, the department of the competent minister would make every effort to consult with the implicated provincial, territorial, or Indigenous government. To the extent possible, the department of the competent minister may also consult with the relevant Indigenous organizations, communities, and other partners and stakeholders.

Scope and scale

The scope and scale of an imminent threat assessment will be proportional to the nature of the threat. An imminent threat assessment can focus on specific areas, sub-populations, or ranges² of a wildlife species. For example, an imminent threat assessment may be undertaken in cases

² The local, subpopulation or range level should, to the extent possible, align with how the wildlife species' population distribution objectives are defined in the relevant Recovery Strategy. If no Recovery Strategy has been developed for the wildlife species, the best-available information is used.

where the threat(s) being assessed is/are limited to a specific geographic area or where their impacts have been limited to certain sub-populations. In such cases, the imminent threat assessment will seek to determine whether the impacts of the threat(s) at a local or subpopulation level are likely to render recovery or survival of the wildlife species as listed under Schedule 1 of SARA highly unlikely or impossible.

In addition, the imminent threat assessment can assess the impacts of one threat or cumulative impacts from multiple threats, as relevant.

Considerations

The answers to the following questions are key considerations in supporting the Minister in forming an opinion on whether a wildlife species is facing imminent threat(s):

1. Is the wildlife species facing a new or evolving human-induced threat(s) or is the impact of an existing human-induced threat intensifying?
2. Will the impact of the threat(s) make:
 - a. Survival of the wildlife species highly unlikely or impossible?
 - b. Recovery of the wildlife species highly unlikely or impossible?
3. Does the threat(s) require immediate intervention beyond existing protection measures?

9. Measures to Address the Imminent Threat

Where the Minister determines that a wildlife species is facing imminent threats to its recovery or survival, the Department will support the Minister in fulfilling their obligations under the Act. In addition, the Department will provide advice to the Minister on appropriate measures to implement to address the threats. These can include conservation and protection measures in collaboration with provincial, territorial, and municipal governments, Indigenous governments and organizations, and other conservation partners to address the imminent threat(s).

Provincial/territorial measures: Best efforts will be made to engage with the government(s) who have jurisdiction over the wildlife species in question and/or authority over regulating activities that are causing the threats to the wildlife species, to ensure that they are provided the opportunity to implement appropriate measures within their authority to address those threats.

Collaborative agreements: Consideration will be given to whether there is an opportunity to establish collaborative agreements that include measures and activities to address the imminent threat(s) with the responsible jurisdiction(s), Indigenous governments and organizations, and/or other partners or stakeholders. These can include, but are not limited to, funding agreements or conservation agreements under SARA.

Other relevant provisions of SARA: Consideration will be given to whether there are other tools within the scope of the Minister's authority, including under SARA or another Act of Parliament, which may be appropriate or effective for addressing the threats.

10. Re-assessment to Inform the Repeal of an Emergency Order

If the department of the competent minister's opinion is in possession of sufficient and credible information indicating that the wildlife species would no longer face imminent threat(s) to its recovery or survival, even if the order were repealed, the department would undertake a re-assessment of the scientific analysis that led to the recommendation for the emergency order (as per section 8 above). The re-assessment would help inform the competent minister's new opinion, which could lead to a recommendation to the Governor in Council to repeal the order.

A key consideration in the re-assessment is whether measures equivalent to the emergency order have been implemented to address the imminent threat(s), including an agreement under section 11 of SARA; an order under section 61 of SARA; conservation measures taken under another Act of Parliament; or conservation measures implemented by a provincial, territorial, or Indigenous government.

11. Monitoring and Reporting

Where the Minister has formed the opinion that a wildlife species is facing imminent threats, and measures have been put in place to address those threats, the effectiveness of those measures will be monitored, as required.

This policy may be updated periodically to ensure it continues to meet its objectives. Public reporting on the implementation of this policy will be done through the SARA Annual Report.

12. Additional Information

Imminent threat assessments and Ministerial opinions formed pursuant to this policy are posted on the [SAR Public Registry](#).

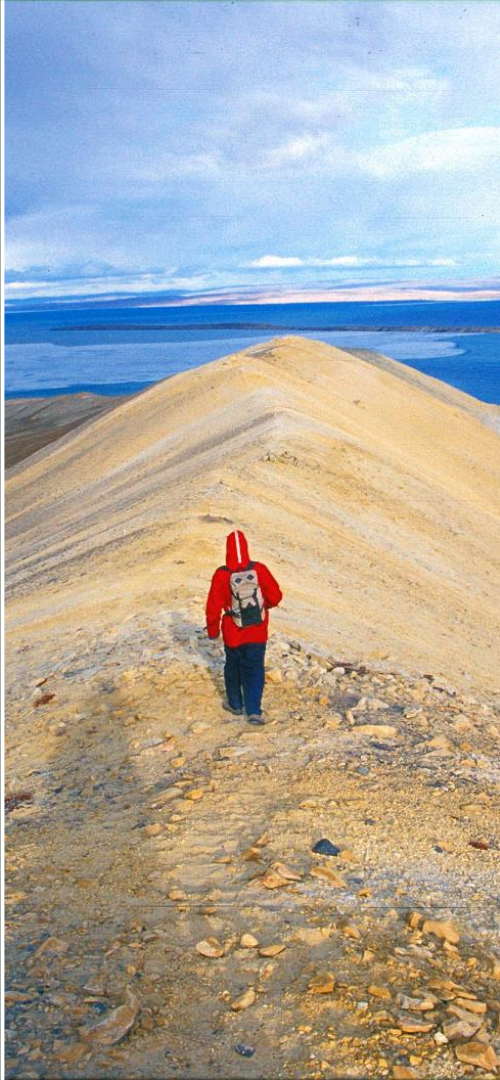
For further information, please consult the Species at Risk Public Registry or contact dpeep-sarpd@ec.gc.ca



የገጽ

ግብይት ለማድረግ የሚያስፈልጉት?

- የገጽ ለማድረግ የሚያስፈልጉት ምንድን ነው?
- የገጽ ለማድረግ የሚያስፈልጉት ምንድን ነው?
- ለገጽ ለማድረግ የሚያስፈልጉት ምንድን ነው?
- የገጽ ለማድረግ የሚያስፈልጉት ምንድን ነው?
- የገጽ ለማድረግ የሚያስፈልጉት ምንድን ነው?



Agenda

- What is a management plan?
- How does it gets created?
- Key strategies
- Zoning summary
- Conclusion



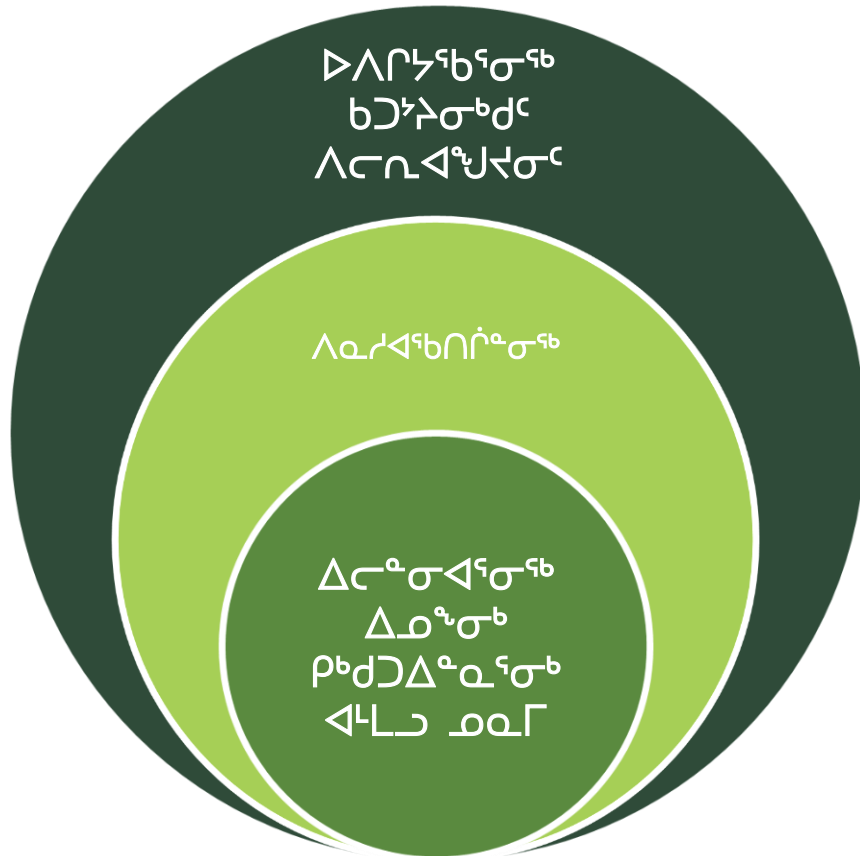
ΔΓΛΓΨΔΣΩΣΔ ΔΨΓΣΩΣ

ΔΔΔΔ ΔΨΩΣΔΔΔΔΔΔΔΔΔΔ
ΔΔΔΔΔΔΔΔΔΔΔΔΔΔΔΔ ΔΨΓΓΩΣΔΔΔ
ΔΔΔΔΔΔΔΔΔΔΔΔΔΔΔΔ

- ΨΔΔΔΔΔΔΔΔΔΔ ΔΔΔΔΔΔΔΔΔΔ
ΔΔΔΔΔΔΔΔΔΔΔΔΔΔΔΔ

The Big Idea

- Implement Inuit Impact and Benefit Agreement Obligations
- Ensuring Operations are Efficient





ᐃᐱᓐᓂᓐ? ᐅᓐᓂᐅᓯᓐᓴᐃᓐ?
ᐃᓕᓯᐃᓯᓯᓯᓴᓴᓯᓐ? ᓕᐃᐃᓯᓐ
ᐅᓐᓂᐅᓯᓴᓴᓯᓐ ᓴᓯᓂᓐᓐ ᓐᓐᓂᐅᓯᓐ?

Questions? Comments? Input?

Danika Guppy

Planner

danika.guppy@pc.gc.ca

867-975-4684

ᓕᓂᓐ ᓴᐱ

ᓐᓐᓂᐅᓯᓐ

danika.guppy@pc.gc.ca

867-975-4684

Jenn Lukacic

Area Superintendent

Nunavut North

jennifer.lukacic@pc.gc.ca

867-975-1262

ᓴᓐ ᓂᓐᓯᓴᓴᓯᓐ

ᓐᓐᓂᐅᓯᓐ ᐅᐃᓐᓂᐅᓯᓐ

ᐃᓯᓴᓴᓯᓐ

jennifer.lukacic@pc.gc.ca

867-975-1262



**SUBMISSION TO THE
NUNAVUT WILDLIFE MANAGEMENT BOARD
FOR**

Information

Decision: X

Issue: To seek approval from the Nunavut Wildlife Management Board (NWMB) on the aspects of the draft Quttinirpaaq National Park Management Plan that concern wildlife management.

Background:

(a) How the issues relates to the NWMB mandate;

Parks Canada and the Quttinirpaaq Joint Park Management Committee (JPMC) is seeking NWMB approval of the aspects in the draft Quttinirpaaq National Park Management Plan (enclosed) that concern wildlife management. This draft management plan, once approved, will replace the plan that was approved by the Minister responsible for Parks Canada in 2009.

(b) Why the issue is being presented;

This issue is being presented in accordance with the requirements of the Inuit Impact and Benefit Agreement for Auyuittuq, Quttinirpaaq and Sirmilik National Parks (known hereafter as the Baffin IIBA). The following articles are addressed in the management plan before the Board:

- Section 5.3.35: *“The JPMC will forward the final draft Plan to the NWMB. Under subsections 5.2.34 (c) and (d) of the NLCA, the NWMB may, in its discretion, approve any part of the final draft Plan that concerns the management and protection of particular wildlife or wildlife habitats. The NWMB decision is subject to review by the Minister under Sections 5.3.16 to 5.3.23 of the NLCA. Upon completion of the NWMB approval process, the final draft Plan will be returned to the JPMC.”*
- Section 8.1.14: *“Upon ratification of the Agreement, Parks Canada and the QIA will ask the NWMB to consider prohibiting sport fishing in Quttinirpaaq National Park until the NWMB determines whether the lakes in the Park can sustain sport fishing.”* The NWMB approved a prohibition on sport fishing in Quttinirpaaq National Park in 2006, and this draft management plan is not proposing any changes to this ban. Note that this prohibition only applies to visitors to Quttinirpaaq National Park, which does not include Inuit exercising rights-based activities provided for in the *Nunavut Agreement*.

No wildlife management measures that affect Inuit rights-based activities provided for in the *Nunavut Agreement* is being proposed in the draft management plan.

(c) The key facts and circumstances relating to the issue; and

The *Canada National Parks Act* and the *Parks Canada Agency Act* require every national park administered by Parks Canada to have a management plan; once developed, it is to be reviewed every ten years with any changes to be tabled in Parliament and approved by the Minister responsible for Parks Canada. In the Nunavut Field Unit, implementing the Baffin IIBA requires the management plan to be developed by the Park Planning Team (PPT), which is a joint Inuit/government planning team that consists of an equal number of members appointed by Parks Canada and the Qikiqtani Inuit Association.

In preparation of the draft Quttinirpaaq National Park Management Plan, the PPT undertook early engagement (Fall 2018-Winter 2019) with key stakeholders, including Inuit in the communities of Resolute Bay and Grise Fiord, which are described in the Baffin IIBA as the adjacent communities with a special relationship to the park. This feedback directly informed the development of the vision, key strategies, objectives, and targets outlined in the draft management plan, which was approved for formal public consultation by the JPMC in November 2019. Due to delays as a result of the COVID-19 pandemic, consultations on the draft plan occurred in Summer 2022 through Winter 2023.

The management plan is a high-level, results-based guidance document for the next ten years of management, planning, and operations within Quttinirpaaq National Park.

Only sparse sections of the document address wildlife management considerations, including:

- The continuation of the NWMB-approved prohibitive ban on sport fishing within all bodies of water inside the boundary of Quttinirpaaq National Park, and;
- Zoning restrictions related to the access and use of land in defined areas that support critical habitat for species at risk and cultural heritage resources. In particular, the major change in zoning from the previous 2009 management plan is the approach to the Lake Hazen/Tasialuk Basin, which has shifted to Zone II with a Special Management Area designation. This shift highlights the importance of maintaining a high level of protection for this very special region, while encouraging continued research and small-scale visitation in a way that is consistent with Parks Canada zoning in other locations. It is primarily an administrative change intended to ensure that the policy framework for this area is better aligned with current and projected use patterns.

(d) The estimated time required to orally present the issue (excluding questions/discussion).

Parks Canada staff will deliver a 15–20-minute PowerPoint presentation (enclosed) that provides details about the management planning process, an overview of the draft management plan (i.e., key strategies, objectives, and zoning), and the results of consultation.

Consultation:

How We Engaged:

The formal consultation exercises conducted in 2022 and early 2023 sought to confirm the success to which the shared interests expressed in early engagement conversations were incorporated into the draft management plan.

The general approach included the following:

- Consultation was undertaken mainly through face-to-face stakeholder meetings and open house presentations. These sessions included a presentation on management planning and the development of the draft management plan and an overview of the draft management plan vision, key strategies and objectives, and zoning. These meetings occurred in both Resolute (June 21-23 and July 11-14, 2022) and Grise Fiord (November 7-9, 2022). Targeted stakeholders based out of Iqaluit were also engaged primarily through virtual meetings and email communication (Winter 2023).
- In Resolute, as consultations took place during the summer, the Park Planning Team hosted a community barbeque in partnership with the Quttinirpaaq Joint Park Management Committee.
- In Grise Fiord, in addition to face-to-face meetings, a radio broadcast was presented on the community radio to generate awareness of the project and to promote an upcoming open house event. The radio in Resolute has been experiencing on-going technical difficulties, so a radio broadcast was not possible.
- In both communities, print flyers with detailed background information about the management planning process, where to access the online comment card, and upcoming in-community open house meetings were distributed into local mailboxes where possible or were otherwise left for easy access at the local post office. Flyers advertising the open house meeting details were also displayed at various high-traffic locations in communities (e.g., Co-op store, Hamlet offices, hotel, etc.) throughout the week leading up to each event.
- Written materials were sent to any stakeholders for comment if face-to-face meetings could not be arranged.

Who We Engaged:

Table 1. Number, type of stakeholders consulted in Resolute (June 21-23; July 11-14, 2022).

Stakeholder Group	Type of Consultation	Estimated Number of Individuals
Quttinirpaaq Joint Park Management Committee meeting*	In-person	3
One-on-one with the Mayor of Resolute	In-person	1

Delegation to Hamlet Council meeting*	In-person	5
Community Open House*	In-person	10
Community BBQ*	In-person	40
Hunters and Trappers Association**	Email & in-person opportunistic conversations	?
TOTAL		59

**Indicates events that were open to the general public.*

***HTA was invited to participate in the stakeholder meeting with the Mayor of Resolute Bay, but unfortunately, none were able to attend on the day of the event. Other efforts both in person and virtually via phone/email were made to arrange a meeting with no success. Opportunistic conversations with members were held at the community BBQ, and a virtual copy of the consultation materials was provided via email to the HTA Manager for distribution to Directors.*

Table 2. Number, type of stakeholders consulted in Grise Fiord (November 7-9, 2022).

Stakeholder Group	Type of Consultation	Estimated Number of Individuals
Invited stakeholder meeting (Hamlet Council, Hunter and Trappers Association, etc.)	In-person	9
Open House*	In-person	12
Hamlet Lobby display*	In-person	5 + various passive connections
Grise Fiord community radio*	In-person	?
Pancake breakfast at local school (with Royal Canadian Mounted Police)	In-person	?
TOTAL		26

**Indicates events that were open to the general public.*

In addition to community consultations, the PPT reached out to key government departments and stakeholders with involvement or interest in Quttinirpaaq National Park virtually or via email, including the Department of Fisheries and Oceans, Department of National Defence, Environment and Climate Change Canada, the Government of Nunavut, and the Inuit Heritage Trust.

Online consultation was open from June through to December 2022 through the *Consulting with Canadians* webpage, directing the public to the Parks Canada webpage. Here, information was provided on the development of the 2020 Draft Management Plan along with an overview of Parks Canada’s management planning process. Visitors to the site were invited to either fill out a comment card with specific questions about the plan or directly email their input to Parks Canada staff. A link was shared on the Parks Canada social media pages and local Facebook groups in Resolute and Grise Fiord in English, French, and Inuktitut.

Table 3. Summary of online participation and engagement.

Type of Engagement	Reach
Visits to online “landing page” about the project posted on Parks Canada Quttinirpaaq webpage	874 (194 IN, 612 EN, 68 FR)
Visits to online draft management plan	384 (12 IN, 344 EN, 28 FR)
Visits to online comment card	378 (84 IN, 228 EN, 66 FR)
Facebooks posts (on the Parks Canada, Nunavut page and local community groups)	5449 (2231 IN, 3654 EN, 95 FR)
TOTAL	7,085

The Quttinirpaaq Joint Park Management Committee will formally review and approve the revised draft management plan during the week of May 22, 2023.

What We Heard:

No substantive issues were raised in consultations. The majority of edits made to the plan as a result were editorial or minor in nature, namely to provide greater clarity to the reader:

- *Zoning:* Additional information on the meaning and purpose of each specific zone was added in the zoning section of the management plan (see Section 6.0 Zoning). This was mainly in response to several questions, especially from community members, about the meaning of zoning and the restrictions of each specific zone. While providing information about zoning, staff were clear to emphasize that zoning restrictions do not and will never apply to Inuit exercising rights-based activities in Quttinirpaaq or any of the Parks Canada sites in Nunavut. Nevertheless, it is important that the concept is well understood in order for Inuit and Parks Canada to effectively work together in protecting the lands within Quttinirpaaq, and also to promote the dissemination of accurate information to any Quttinirpaaq visitors who may be passing through Resolute and/or Grise Fiord.
- *Lake Hazen/Tasaliuk Basin Management Area:* Further to the above, many comments received from consultation related specifically to the new special management area

designation and shift from Zone I to Zone II in the Lake Hazen/Tasaliuk Basin Area. Language has been edited to emphasize that this change has been proposed in order to better consider opportunities for controlled research and small-scale visitation while continuing to ensure consistent and appropriate protection for such a special place. Objective 1 recognizes that future changes to the zoning of this area may be required if evidence shows negative impacts on the ecological and cultural resources of the area.

- *Connection with Youth:* Building and supporting further connections to the park, particularly for Inuit in adjacent communities, is an important theme embedded throughout the draft plan, and was a comment echoed throughout consultation conversations. Connecting and engaging with youth was especially highlighted as an audience that should be targeted, and minor edits have been made to the draft plan where appropriate to further highlight this priority (e.g., Target 3.1.1: “One outreach activity showcasing a story based on an understanding of Inuit Qaujimagatuqangit and science of Quttinirpaaq is available for staff to share and present within two years, *with a priority on youth audiences where possible*”).
- *International Value:* The immense international value of research conducted in Quttinirpaaq National Park - particularly studying the impacts of climate change - was highlighted by the research community in consultation exercises. Minor edits emphasizing the global importance of the park have been added where appropriate in balance with highlighting the local importance to adjacent communities.
- *Maps:* All maps have been reformatted to meet updated Parks Canada cartographic guidelines. Further, the zoning and inset maps (Map 3 in draft management plan), which previously existed as two separate figures, have been combined into one for clarity and ease of reference.

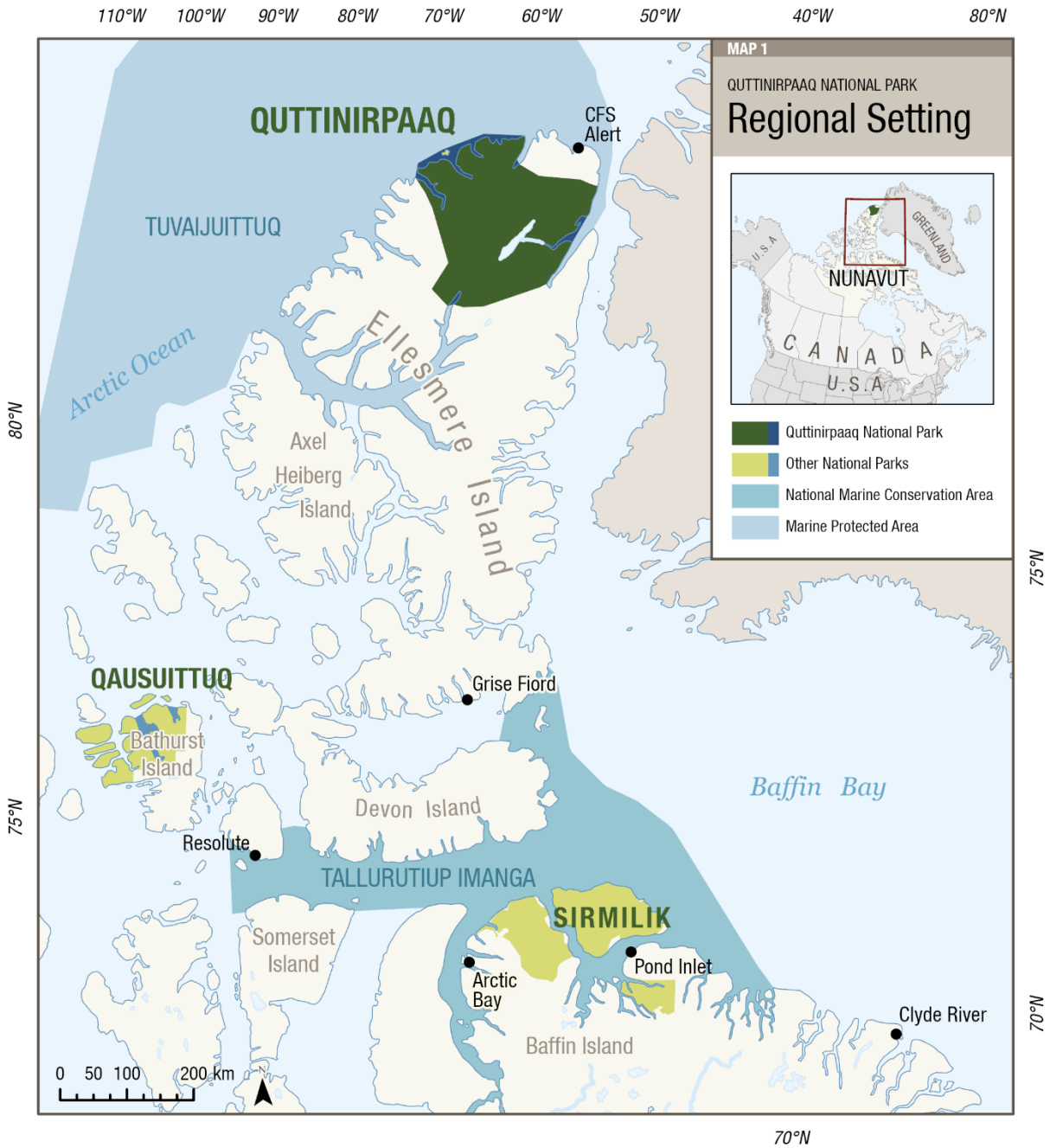
The Park Planning Team received many general questions and comments throughout the consultation process. While many were outside the scope of a management plan, they were recorded and are valued for the insight they offer into the interests and concerns of adjacent communities. Wherever possible, Parks Canada staff answered questions in real time to community members, which was an excellent relationship-building opportunity through knowledge sharing.

See Appendix B of the enclosed “What We Heard” summary document for more details.

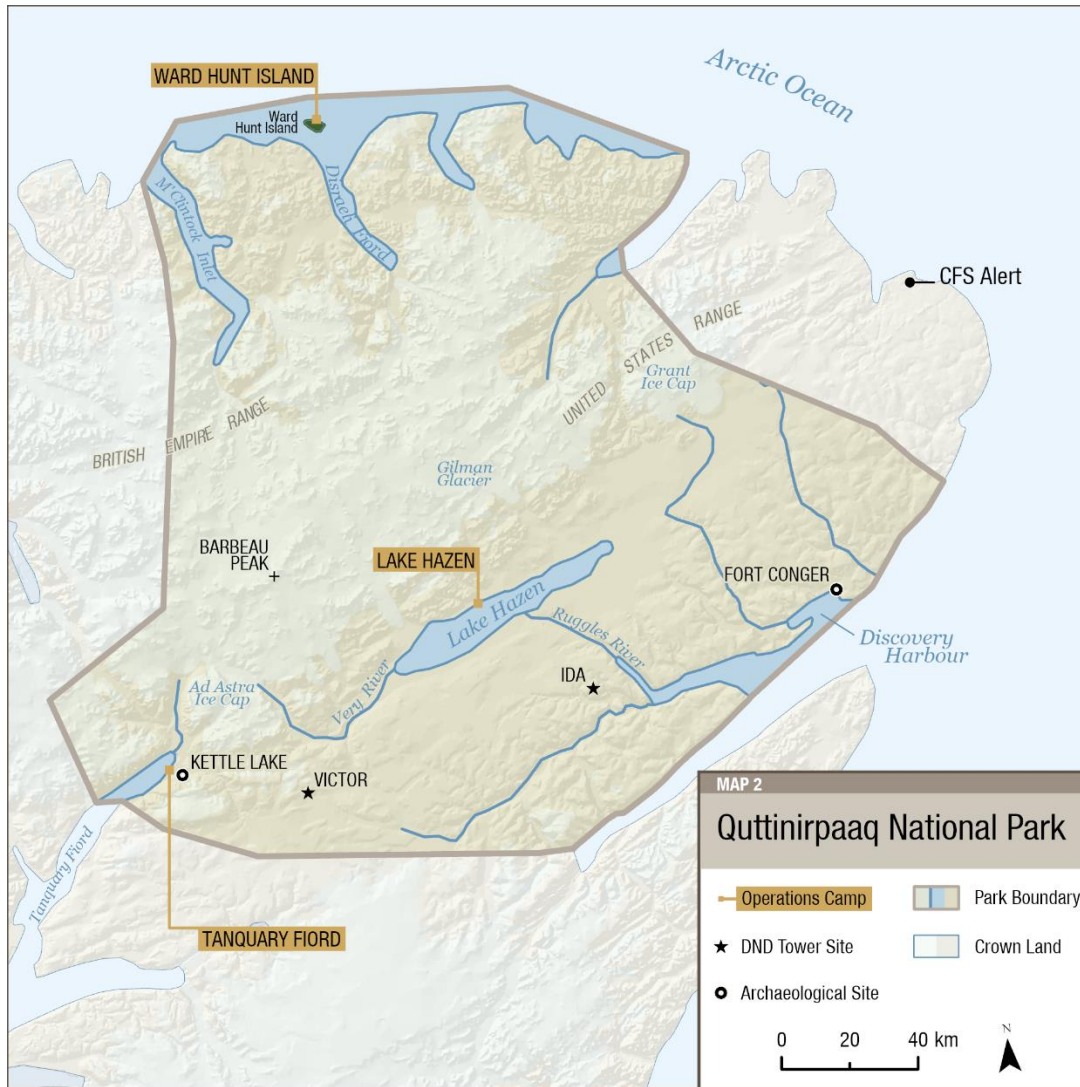
Prepared by:

Danika Guppy
Planner, Nunavut Field Unit
Parks Canada
danika.guppy@pc.gc.ca
867-975-4684

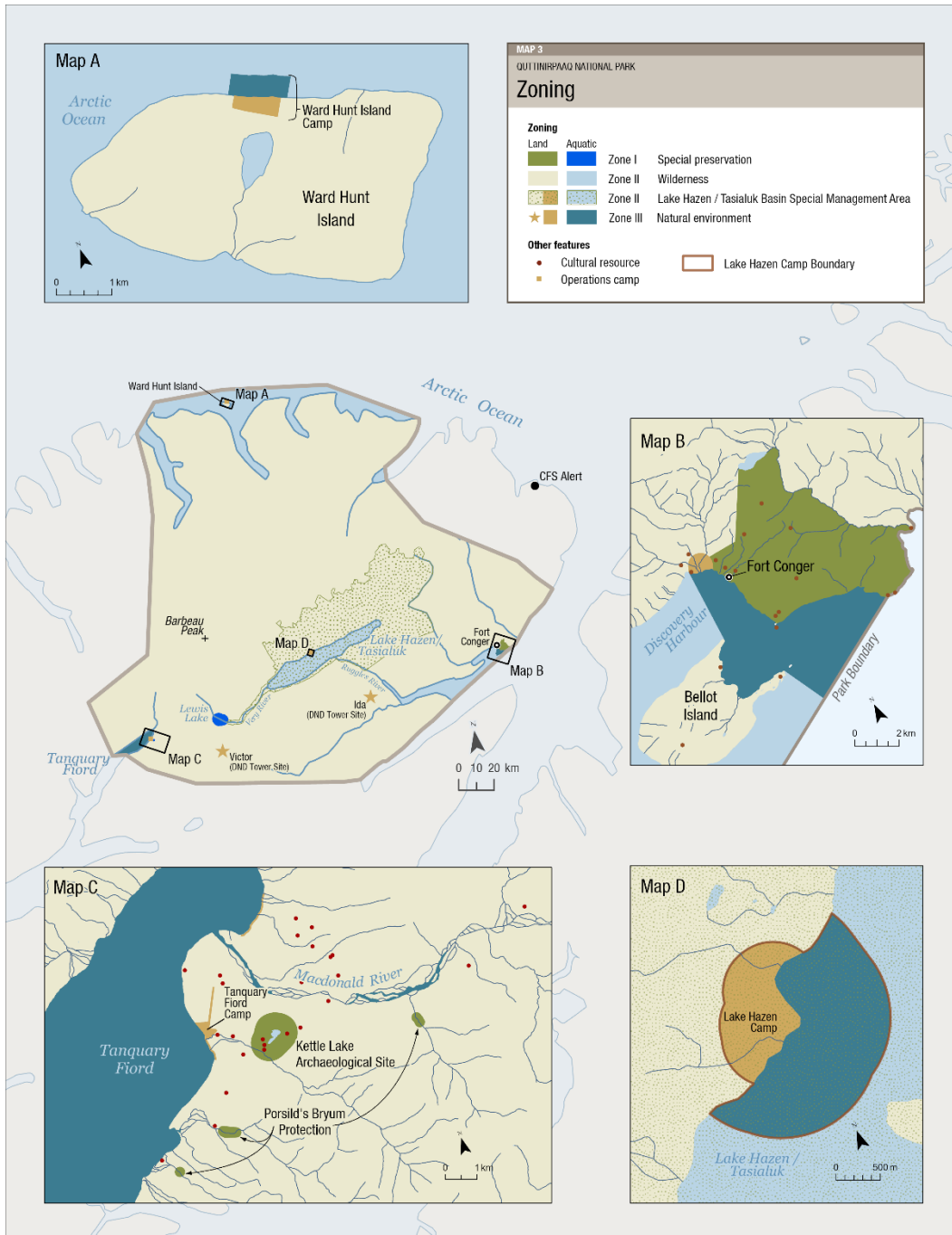
Date: May 5, 2023



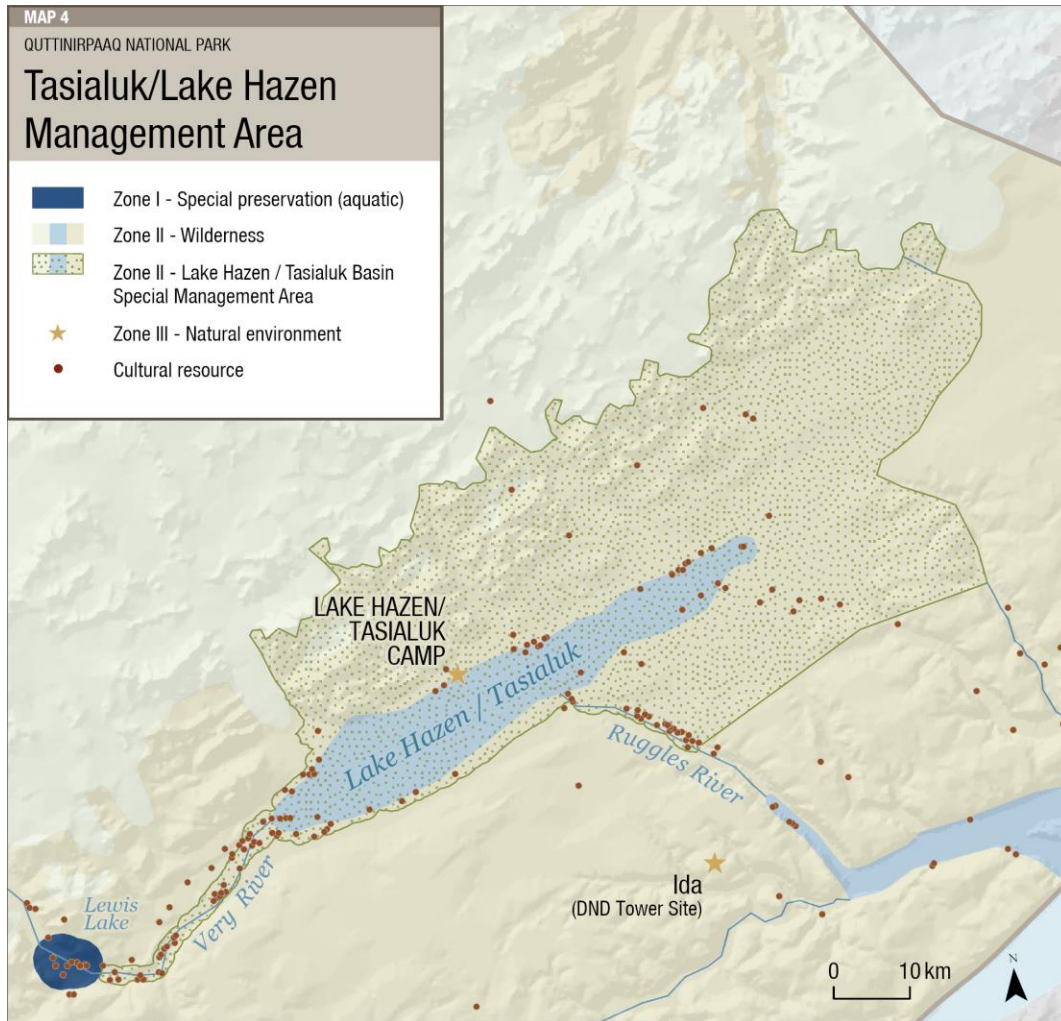
Map 1: Regional setting of Quttinirpaaq National Park. Other Parks Canada protected sites in the area include Qausuittuq National Park on northern Bathurst Island, and Tallurutiup Imanga National Marine Conservation Area. Tuvaijuittuq, which includes the marine waters off northern Ellesmere Island, is the first Marine Protected Area to be designated for interim protection by ministerial order under the *Oceans Act*, limiting human activities in the area for up to five years.



Map 2: Quttinirpaaq National Park boundary. Park operations camps at Tanquary Fiord, Lake Hazen, and Ward Hunt Island are highlighted.



Map 3: Quttinirpaaq National Park zoning. In accordance with the *Nunavut Agreement*, Zone II – Wilderness is the predominant designation of the park. Inset maps A, B, C, and D highlight specific zoning at Ward Hunt Island, Fort Conger, Tanquary Fiord, and Lake Hazen respectively.



Map 4: Tasialuk/Lake Hazen Management Area. The shift to Zone II offers a chance to specifically consider the challenges and opportunities of this special place. The Lake Hazen/Tasialuk Camp is a small Zone III area to facilitate base camp operations.

Executive Summary

Located on northern Ellesmere Island, Quttinirpaaq National Park is Canada's northernmost national park, representing the Eastern High Arctic Natural Region in Canada's National Park System Plan. Initially established as a National Park Reserve in 1988, Quttinirpaaq National Park protects 37,775km², and is the country's second largest National Park. The park's landscape is dominated by glaciers and mountains and includes a variety of uniquely adapted ecosystems, resulting in protection of substantial biodiversity.

Together, Parks Canada and Inuit are managing Quttinirpaaq National Park through the Joint Park Management Committee as outlined in the *Nunavut Agreement* and the *Inuit Impact and Benefit Agreement for Auyuittuq, Sirmilik and Quttinirpaaq* (IIBA). This management committee advises the Minister on any matters pertaining to park management for ministerial approval.

This management plan replaces the 2009 management plan for Quttinirpaaq National Park and reflects the priorities of Parks Canada and Inuit partners. The plan outlines the importance of Quttinirpaaq to multiple groups, including Inuit from the adjacent communities of Resolute Bay and Grise Fiord, whose ancestors lived here. Quttinirpaaq is a place of global importance to understand the impacts of climate change.

The vision articulated in this plan underlines the importance of conservation, partnerships and enhancement of opportunities for appreciation and understanding of the park's natural and cultural significance. Three key strategies, a zoning plan and an area management approach are identified to guide management activities to realize the park's vision.

Key Strategy #1 Honoring Shared Commitments

Core objectives of the *Nunavut Agreement* are to encourage self-reliance and to support the cultural and social well-being of Inuit. This strategy addresses Parks Canada's goals to meet its *Nunavut Agreement* and IIBA obligations. Parks Canada works with other federal departments to be an active member of the associated communities of Resolute Bay and Grise Fiord.

Key Strategy #2 Working Together

Conservation is more successful when aligned with regional initiatives for activities inside and outside the park. Quttinirpaaq management will be guided by the Inuit Societal Value of *Qanuqtuurniq* (being innovative and resourceful) to pro-actively seek out ways to work with others to ensure continued success. Effective two-way communication and relationship building with communities is essential to realize this success.

Key Strategy #3 Learning from People and Land

Quttinirpaaq management will bring together science and Inuit Qaujimajatuqangit to foster **Avatittinnik Kamatsiarniq** (respect and care for the environment) and increase our understanding of the natural and cultural values of the park and the greater region. This knowledge will be used to encourage global appreciation and understanding of the High Arctic, the impacts of climate change and humanity's ingenuity and ability to adapt to challenges and changing circumstances.

What We Heard:
**Quttinirpaaq National Park Draft Management Plan
Consultation Summary**

Table of Contents

1.0 Introduction	2
2.0 Background	2
2.1 About Quttinirpaaq National Park	2
3.0 Consultation and Engagement Process	3
3.1 Phase I: Development of the Draft Management Plan (Fall 2018-Winter 2019)	3
3.2 Phase II: Consultation on the Draft Management Plan (Summer 2022-Winter 2023)	4
4.0 Who We Heard From	5
5.0 What We Heard	7
6.0 Next Steps	9

DRAFT

1.0 Introduction

This report provides an overview of the formal consultation process conducted between **Summer 2022 and Winter 2023** on the Quttinirpaaq National Park Draft Management Plan. It provides a summary of feedback shared with the Park Planning Team and how that input ultimately influenced the final product.

2.0 Background

The *Canada National Parks Act* and the *Parks Canada Agency Act* require Parks Canada to prepare a management plan for each national park and to review it every 10 years.

Management plans are developed through consultation with Indigenous peoples, partners, stakeholders, and the public, and they serve as the key accountability document to all Canadians regarding the management of sites administered by Parks Canada.

Importantly, in Parks Canada's Nunavut Field Unit (NFU), management plans also support decision-making to achieve measurable results in the implementation of the *Nunavut Agreement* and relevant Inuit Impact and Benefit Agreements - in the case of Quttinirpaaq National Park, the specific agreement is the *Inuit Impact and Benefit Agreement for Auyuittuq, Quttinirpaaq and Sirmilik National Parks* (the Baffin IIBA). The Baffin IIBA requires that management plans be developed by a Park Planning Team consisting of an equal number of members appointed by Parks Canada and the Qikiqtani Inuit Association (QIA). Through this process, the Park Planning Team sets out context, vision, strategies, objectives, and targets for the park based on findings of the "state of" assessment and scoping submission.

2.1 About Quttinirpaaq National Park

Located on northern Ellesmere Island, Quttinirpaaq National Park is Canada's northernmost national park, representing the Eastern High Arctic Natural Region in Canada's National Park System Plan. Initially established as a National Park Reserve in 1988, Quttinirpaaq National Park protects 37,775km², and is the country's second largest national park. Quttinirpaaq's landscape is dominated by glaciers and mountains and includes a variety of uniquely adapted ecosystems, resulting in the protection of substantial biodiversity. Together, Parks Canada and Inuit are managing Quttinirpaaq National Park through the Joint Park Management Committee as outlined in the *Nunavut Agreement* and the Baffin IIBA.

Resolute Bay / Qausuittuq "the place with no dawn"

Population: 183 (2021 Census)

Resolute is one of Canada's northernmost inhabited communities (second only to Grise Fiord). Located on Cornwallis Island, the population is 83% Inuit and 65.6% Inuktitut-speaking. The average age is 27.8.

Grise Fiord / Ausuittuq "the place that never thaws"

Population: 144 (2021 Census)

Located on Ellesmere Island, Grise Fiord is the northernmost inhabited community in Canada. The population is 93% Inuit and 77.5% Inuktitut-speaking. The average age is 30.9.

3.0 Consultation and Engagement Process

The *State of the Park Assessment* and the Scoping submission - the first steps of the management planning process - were completed in 2018 and 2019 respectively. These documents provide a foundation of key issues and opportunities to be addressed in the new management plan. In order to facilitate meaningful opportunities to contribute to the development of the new management plan for Quttinirpaaq National Park, the Park Planning Team developed an engagement plan to solicit input from Inuit - especially from the adjacent communities of Resolute and Grise Fiord - government partners, stakeholders, and the general public. The engagement plan outlined two key phases, as described in the sections below.

3.1 Phase I: Development of the Draft Management Plan (Fall 2018-Winter 2019)

During the development of the 2020 Draft Management Plan, the Park Planning Team undertook early engagement exercises to discuss key vision elements, themes, and shared interests for Quttinirpaaq's new management plan. This engagement consisted primarily of in-person meetings with key Inuit stakeholders in the communities of Resolute and Grise Fiord (e.g., Hamlet Councils, local Hunters and Trappers Associations, Elders, and business owners), and individual meetings with other government departments in-person or virtually. Examples of the shared interests that were raised in these meetings and their connection(s) to the Draft Management Plan is outlined below in Table 1.

Table 1. Shared interests expressed in Phase I engagement meetings that informed the development of the Draft Management Plan.

Shared Interest	Examples	2020 Draft Management Plan Connection
More people from Resolute and Grise Fiord involved	<ul style="list-style-type: none"> ● Create more jobs in the park for community members (and consider shorter contracts) ● Complete spring training in Resolute and/or Grise Fiord instead of Iqaluit ● Emphasize youth engagement and employment, visit schools ● Provide more opportunities for community members to visit park 	See Objectives 1.1, 1.2, 1.3.
Better communication between Parks Canada and communities	<ul style="list-style-type: none"> ● Centralize posting of job ads ● Create informational/promotional material to promote the park ● Consider creating a community liaison position in adjacent communities ● Reevaluate the way in which job ads are written to be more inclusive/less intimidating (e.g., reduce use of jargon, use more photos, etc.) ● Improve communications with adjacent communities about research conducted in the park (esp. about climate change) 	See Objective 1.1, 1.2, 1.3, 2.4, 3.1.

<p>Better benefits from visitors</p>	<ul style="list-style-type: none"> ● Grise Fiord often feels left out of benefits from visitors ● Continue to explore town tour ideas with Hamlet staff in both communities ● Provide more in-community support to develop tourism opportunities (e.g., visitor center, coordinator position, etc.) ● Partner with hotels to provide promotional materials/info to visitors ● Notify communities when visitors are scheduled to travel so they can prepare (e.g., to sell things, offer a tour) 	<p>See Objectives 1.2, 2.1, 2.2.</p>
<p>Work in partnership with other: 1) parks 2) organizations</p>	<ul style="list-style-type: none"> ● Discuss future opportunities to work in greater collaboration with all Parks Canada sites in the region (e.g., employment, project coordination) ● Coordinate and work in partnership with other organizations in the region, who all share similar challenges and goals 	<p>See Objectives 2.1 2.2, 2.3 (Key Strategy #2 - Working Together).</p>
<p>Facilities in Resolute and Grise Fiord</p>	<ul style="list-style-type: none"> ● Consider establishing visitor centre(s) ● Consider establishing an office in Grise Fiord (there is one already in Resolute) 	<p>See Key Strategy #2 - Working Together.</p>

3.2 Phase II: Consultation on the Draft Management Plan (Summer 2022-Winter 2023)

The formal consultation exercises conducted in 2022 and early 2023 sought to confirm the success to which the above shared interests were incorporated into the Draft Management Plan for Quttinirpaaq National Park.

The general consultation approach was approved in principle by the Quttinirpaaq Joint Park Management Committee through the Scoping submission in 2018:

“Representatives of the PPT will conduct in-person public consultations in the two adjacent communities. The PPT will use an open house approach for broad reach into the two adjacent communities. In addition, the draft plan will be placed on the Quttinirpaaq web page, the Consulting with Canadians website, and circulated to a mail list, for comment. Canadians-at-large will be invited to comment on the draft plan online. Upon conclusion of consultation, a public “what we heard” newsletter will be circulated.

In accordance with the above framework, the Park Planning Team developed consultation materials and a detailed strategy for engagement. Some highlights are listed below:

- Consultation was undertaken mainly through face-to-face stakeholder meetings and open house presentations. These sessions included a presentation on management planning and the development of the draft management plan and an overview of the draft management plan vision, key strategies and objectives, and zoning. These meetings occurred in both Resolute (June 21-23 and July 11-14, 2022) and Grise Fiord

(November 7-9, 2022). Targeted stakeholders based out of Iqaluit were also engaged primarily through virtual meetings (February 2023).

- In Resolute, as consultations took place during the summer, the Park Planning Team hosted a community barbeque in partnership with the Quttinirpaaq Joint Park Management Committee.
- In Grise Fiord, in addition to face-to-face meetings, a radio broadcast was presented on the community radio to generate awareness of the project and to promote an upcoming open house event. The radio in Resolute has been experiencing on-going technical difficulties, so a radio broadcast was not possible.
- In both communities, print flyers with detailed background information about the management planning process, where to access the online comment card, and upcoming in-community open house meetings were distributed into local mailboxes where possible or were otherwise left for easy access at the local post office. Flyers advertising the open house meeting details were also displayed at various high-traffic locations in communities (e.g., Co-op store, Hamlet offices, hotel, etc.) throughout the week leading up to each event.
- Written materials were sent to any stakeholders for comment if face-to-face meetings could not be arranged.

4.0 Who We Heard From

The below sections give an overview of the estimated number and type of stakeholders who were consulted throughout the formal consultation period.

Table 2. Number, type of stakeholders consulted in Resolute (June 21-23; July 11-14, 2022).

Stakeholder Group	Type of Consultation	Estimated Number of Individuals
Quttinirpaaq Joint Park Management Committee meeting*	In-person	3
One-on-one with the Mayor of Resolute	In-person	1
Delegation to Hamlet Council meeting*	In-person	5
Community Open House*	In-person	10
Community BBQ*	In-person	40
Hunters and Trappers Association**	Email & in-person opportunistic conversations	?
TOTAL		59

*Indicates events that were open to the general public.

***HTA was invited to participate in the stakeholder meeting with the Mayor of Resolute Bay, but unfortunately, none were able to attend on the day of the event. Other efforts both in person and virtually via phone/email were made to arrange a meeting with no success. Opportunistic conversations with members were held at the community BBQ, and a virtual copy of the consultation materials was provided via email to the HTA Manager for distribution to Directors.*

Table 3. Number, type of stakeholders consulted in Grise Fiord (November 7-9, 2022).

Stakeholder Group	Type of Consultation	Estimated Number of Individuals
Invited stakeholder meeting (Hamlet Council, Hunter and Trappers Association, etc.)	In-person	9
Open House*	In-person	12
Hamlet Lobby display*	In-person	5 + various passive connections
Grise Fiord community radio*	In-person	?
Pancake breakfast at local school (with Royal Canadian Mounted Police)	In-person	?
TOTAL		26

**Indicates events that were open to the general public.*

In addition to community consultations, the PPT reached out to key government departments and stakeholders with involvement or interest in Quttinirpaaq National Park virtually or via email, including the Department of Fisheries and Oceans, Department of National Defence, Environment and Climate Change Canada, the Government of Nunavut, and the Inuit Heritage Trust.

Online consultation was open from June through to December 2022 through the *Consulting with Canadians* webpage, directing the public to the Parks Canada webpage. Here, information was provided on the development of the 2020 Draft Management Plan along with an overview of Parks Canada’s management planning process. Visitors to the site were invited to either fill out a comment card with specific questions about the plan or directly email their input to Parks Canada staff. A link was shared on the Parks Canada social media pages and local Facebook groups in Resolute and Grise Fiord in English, French, and Inuktitut.

Table 4. Summary of online participation and engagement.

Type of Engagement	Reach
Visits to online “landing page” about the project posted on Parks Canada Quttinirpaaq webpage	874 (194 IN, 612 EN, 68 FR)
Visits to online draft management plan	384 (12 IN, 344 EN, 28 FR)
Visits to online comment card	378 (84 IN, 228 EN, 66 FR)
Facebooks posts (on the Parks Canada, Nunavut page and local community groups)	5449 (2231 IN, 3654 EN, 95 FR)
TOTAL	7,085

5.0 What We Heard

Responses to the online comment card, email submissions, and in-person meetings indicated that participants were generally very supportive of the proposed vision elements and the three key strategies identified in the draft management plan. The three key strategies that were developed for this management plan include the following:

1. Key Strategy #1 - Honouring Shared Commitments: ensuring that Parks Canada’s obligations in the *Nunavut Agreement* and the Baffin IIBA with respect to Quttinirpaaq National Park are being met and respected.
2. Key Strategy #2 - Working Together: Aligning conservation efforts in the region to more effectively work together in addressing both shared goals and shared challenges.
3. Key Strategy #3 - Learning from People and Land: Strengthening people’s connections to and understanding of Quttinirpaaq National Park using both science and Inuit Qaujimajatuqangit.

No substantive issues were raised in consultations. Table B1 in Appendix B provides a detailed overview of all the comments that were received or heard in conversations during Phase II consultation activities.

The majority of edits made to the plan as a result were editorial or minor in nature, namely to provide greater clarity to the reader. For example:

- *Zoning:* Additional information on the meaning and purpose of each specific zone was added in the zoning section of the management plan (see Section 6.0 Zoning). This was mainly in response to several questions, especially from community members, about the meaning of zoning and the restrictions of each specific zone. While providing information about zoning, staff were clear to emphasize that zoning restrictions do not and will never apply to Inuit exercising rights-based activities in Quttinirpaaq or any of the Parks Canada sites in Nunavut. Nevertheless, it is important that the concept is well understood in order for Inuit and Parks Canada to effectively work together in protecting the lands within Quttinirpaaq, and also to promote the dissemination of accurate

information to any Quttinirpaaq visitors who may be passing through Resolute and/or Grise Fiord.

- *Lake Hazen/Tasaliuk Basin Management Area:* Further to the above, many comments received from consultation related specifically to the new special management area designation and shift from Zone I to Zone II in the Lake Hazen/Tasaliuk Basin Area. Language has been edited to emphasize that this change has been proposed in order to better consider opportunities for controlled research and small-scale visitation while continuing to ensure consistent and appropriate protection for such a special place. Objective 1 recognizes that future changes to the zoning of this area may be required if evidence shows negative impacts on the ecological and cultural resources of the area.
- *Connection with Youth:* Building and supporting further connections to the park, particularly for Inuit in adjacent communities, is an important theme embedded throughout the draft plan, and was a comment echoed throughout consultation conversations. Connecting and engaging with youth was especially highlighted as an audience that should be targeted, and minor edits have been made to the draft plan where appropriate to further highlight this priority (e.g., Target 3.1.1: “One outreach activity showcasing a story based on an understanding of Inuit Qaujimajatuqangit and science of Quttinirpaaq is available for staff to share and present within two years, *with a priority on youth audiences where possible*”).
- *International Value:* The immense international value of research conducted in Quttinirpaaq National Park - particularly studying the impacts of climate change - was highlighted by the research community in consultation exercises. Minor edits emphasizing the global importance of the park have been added where appropriate in balance with highlighting the local importance to adjacent communities.
- *Maps:* All maps have been reformatted to meet updated Parks Canada cartographic guidelines. Further, the zoning and inset maps (Map 3 in draft management plan), which previously existed as two separate figures, have been combined into one for clarity and ease of reference.

The Park Planning Team received many general questions and comments throughout the consultation process. While many were outside the scope of a management plan, they were recorded and are valued for the insight they offer into the interests and concerns of adjacent communities. Wherever possible, Parks Canada staff answered questions in real time to community members, which was an excellent relationship-building opportunity through knowledge sharing. Below are some examples of the types of questions and comments received in consultation meetings that were general in nature and/or outside the scope of a management plan. They are organized broadly by category.

- The role and responsibilities of Parks Canada, the Quttinirpaaq JPMC, and the general management planning process: *What is a management plan and what does it do? What does the JPMC do? What do Parks Canada staff do in the park? What is zoning and what does each zone mean? What are some major hiking routes in the park?*

- Job opportunities with Parks Canada: *Will there be jobs? How can we make them more attractive to Inuit in adjacent communities?*
- Cultural sites and ecological landscapes protected within Quttinirpaaq: *Has Arctic Char been found in Lake Hazen? What do you know about the numbers and locations of wolf dens in the park?*
- Park accessibility and promotion: *How do people get to the park? What does it cost? Find ways to get more people up there and aware of its importance!*

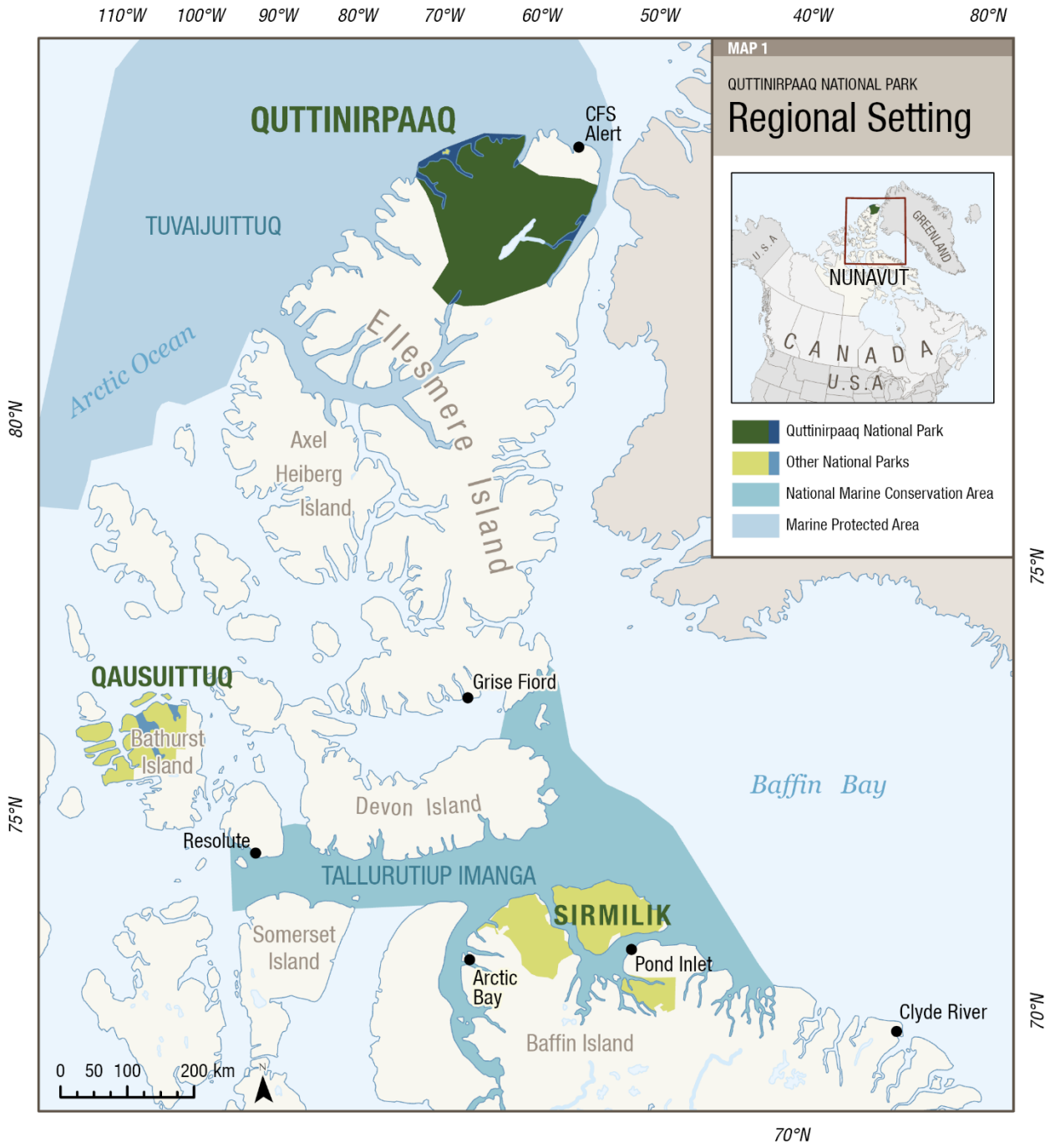
6.0 Next Steps

If the Quttinirpaaq Joint Park Management Committee is satisfied with the amount of consultation conducted and agrees with the changes made to the plan in response to the feedback, it is respectfully requested that the JPMC debate a motion to endorse this consultation summary and this updated version of the management plan as the final draft (in accordance with section 5.3.32(b) of the Baffin IIBA).

Following endorsement by the JPMC, the final draft plan will be forward to the Nunavut Wildlife Management Board (NWMB) for their review and approval at their regular meeting scheduled for June 7, 2023, in Iqaluit, Nunavut. In accordance with section 5.3.35 of the Baffin IIBA, and with the *Canada National Parks Act*, the final version of the management plan will be reviewed and approved by the Minister responsible for Parks Canada and tabled in Parliament to ensure accountability to all Canadians.

The new shared vision developed through this process will guide the management of Quttinirpaaq National Park for the next 10 years, as Parks Canada and Inuit work together to implement the key strategies, objectives, and targets. In short, the management plan is not an end in and of itself, and Parks Canada will continue to maintain an open dialogue on its implementation to ensure that it remains relevant and meaningful.

Appendix A: Quttinirpaaq National Park Regional Setting



Appendix B: “What We Heard” Key Themes Summary

Table B1: Detailed overview of feedback received during consultation exercises and how they were (or were not) incorporated into the 2020 Draft Management Plan for Quttinirpaaq National Park.

What We Heard	Comments / Connection to the 2020 Draft Management Plan
Access to Quttinirpaaq	
Get more people into the park/aware of its importance, especially from the adjacent communities	Quttinirpaaq National Park is a very special place, and sharing its value and importance with all Canadians, especially Inuit in Resolute and Grise Fiord, is a priority emphasized throughout the 2020 Draft Management Plan (see in particular objective 1.3 and 2.2, and the vision).
How do people get to the park? Is there a visitor charter available? How is it arranged? What does it cost?	<p>Questions and comments related specifically to park access arose in every in-community consultation activity, and they came from all types of audiences. While these types of logistical questions are beyond the scope of a park management plan, they do highlight a strong interest in the park and the importance of developing innovative ways to connect Quttinirpaaq to Canadians, which have been highlighted throughout the plan (see Objectives 1.3 and 2.2 in particular).</p> <p>More information about planning a visit to Quttinirpaaq National Park can be found on the Parks Canada website here: https://parks.canada.ca/pn-np/nu/quttinirpaaq/visit. Contact staff directly for further guidance when planning a trip.</p>
Park Promotion and Outreach	
<p>Locally (Resolute and Grise Fiord):</p> <p>Increase advertising of the park to the tourism industry, increase benefits to the communities from visitors.</p> <p>Share information about the park with communities,</p>	<p>See Key Strategy #2, especially Objective 2.2.</p> <p>Community members in Resolute and particularly in Grise Fiord</p>

<p>especially via visual mediums (i.e., videos, pictures, etc.): “We are still learning about our [Ellesmere] island as well”</p>	<p>emphasized the importance of regularly sharing updates and information about the work being conducted within the park. Despite being the closest communities to the park geographically, there is still a significant distance to Quttinirpaaq (approx. 900 km from Resolute), and few community members have visited Quttinirpaaq. As one member of the Grise Fiord Hamlet Council noted, “we are still learning about our [Ellesmere] island as well”; any chance to share photos, videos, and general updates about what is going on in the park should be actioned.</p> <p>Various objectives throughout the new management plan highlight the importance of building more connections between Quttinirpaaq and the adjacent communities (see Objective 1.3 in particular). Based on this feedback, Parks Canada staff ensured that there were photos of Quttinirpaaq and work conducted by the on display at the Grise Fiord public open house meeting.</p>
<p><i>Nationally and Internationally:</i></p> <p>Strengthen connections between the park and <i>all</i> Canadians (e.g., not just the currently emphasized research community)</p>	<p>See Objective 3.1, which outlines targets for public outreach tools and programs to communicate the values of Quttinirpaaq to “all Canadians and beyond”.</p>
<p>Emphasize Quttinirpaaq’s truly global significance</p>	<p>The importance of the scientific data collected from Quttinirpaaq is highlighted throughout the document for its role in advancing a global understanding of climate change. Further, Target 3.1.5 demonstrates a commitment to recognize the value of Quttinirpaaq on a global scale by preparing a nomination for inscription on the list of World Heritage Sites.</p> <p>Minor edits to the language in the vision more explicitly include reference to the park’s global significance.</p>
<p><i>Youth Engagement:</i></p> <p>Increase youth engagement and/or find new ways to engage youth in Quttinirpaaq planning, management, and operations (e.g., get into schools as much as</p>	<p>In-community capacity building for Inuit in adjacent communities, and providing more opportunities for youth involvement, is highlighted throughout the key strategies, especially Objective 1.1, 1.2, and 1.3 (see</p>

possible, consider land camps with youth, Elders, researchers, and Parks Canada staff)	especially Target 1.3.4). Target 3.1.1 was edited (in red) in response to feedback: “One outreach activity showcasing a story based on an understanding of Inuit Qaujimajatuqangit and science of Quttinirpaaq is available for staff to share and present within two years, <i>with a priority on youth audiences where possible</i> ”.
Benefits for Communities	
Can communities benefit from the Polar Shelf Continental Program (PCSP) activities (e.g., equipment and knowledge sharing)?	This question is outside the scope of Parks Canada, however with Key Strategy #2, Parks Canada is seeking to work more closely with both other federal partners and communities to support shared goals. Exploratory conversations have already occurred and will continue during the lifecycle of this management plan.
Are there jobs available in Quttinirpaaq? How can we make them more attractive to Inuit?	While a specific staffing plan is outside the scope of the management plan, Inuit employment has always been a priority for Quttinirpaaq and the entire Nunavut Field Unit. This management plan aims to expand available opportunities for Inuit employment, capacity-building, and increased economic benefits (see Objective 1.2 in particular). Parks Canada intends to not only provide employment opportunities, but also ongoing training and mentoring to promote the long-term success of Inuit candidates.
Building Relationships/Working Together	
Strengthen inter-departmental partnerships and develop connections across government projects where applicable	See Key Strategy #2, especially Objectives 2.3 and 2.4. Parks Canada recognizes that working effectively and maximizing resource efficiency in a land claims context means working together, and this is reflected in the new management plan.
Connections with Greenland (e.g., partner with Greenland on indigenous-led projects, cross border initiatives, etc.)	See, in particular, Target 2.3.3: “ <i>Seek opportunities to support the re-establishment of historical human ties to Greenland</i> ”. The type and scope of these opportunities will be explored throughout the lifespan of

	this new management plan.
Connections to Tuvaijuittuq	See Target 2.3.5, in particular: “ <i>Work with Tuvaijuittuq (High Arctic Basin) and regional conservation initiatives as appropriate</i> ”. Wherever possible, collaborating and coordinating with partners in the management of protected sites on a regional level is an important objective of this new plan.
“Two-way communication” multilateral communication (see Key Strategy #2)	The language around “two-way communication” has been edited to “ <i>multilateral communication</i> ” where appropriate to further highlight the importance of working together with multiple partners.
Historical/Cultural Significance of Quttinirpaaq	
Add explicit mention about the culture and history of the park (esp. Key Strategy #3 and Vision)	Minor editorial changes have been made where appropriate to draw further connections to the cultural heritage aspects of Quttinirpaaq.
Infrastructure	
What type of in-park solar technology is in use, and could that be made accessible to communities?	A general question that is outside the scope of a management plan. Parks Canada staff provided information about solar technology used at camp in Quttinirpaaq.
Clear up old radio towers	Radio microwave towers and stations are the responsibility of the Department of National Defence, who make frequent helicopter visits to the sites during the summer season for maintenance. Currently, there is a multi-year project underway to clean up an old radio tower on Mt. Arthur.
Safety	
Safety and protection for humans and wildlife should always be the priority	Safety and protection are a priority for Parks Canada, and guide all planning, management, and operations in Quttinirpaaq National Park.
Consider impact of cruise ships on marine wildlife	The geographical reality of Quttinirpaaq National Park means that very

	<p>few cruise ships are likely to ever visit the area, and impacts will consequently be minimal. Further, it should be noted that the review of cruise ship routes and potential impacts is an issue that exceeds Parks Canada and rather is dealt with on a broader level through the Nunavut Impact Review Board (NIRB).</p> <p>Although negative impacts marine impacts related to Quttinirpaaq National Park as a result of cruise ships are not anticipated, Parks Canada will respond as needed should there be any concerns that arise.</p>
Research	
<p>Emphasize a stronger connection to climate change in the key strategies</p>	<p>The scientific importance of the park in studying climate change is highlighted throughout the plan; however, some editorial changes have been made to emphasize this importance further wherever appropriate. For example, in the introductory text to Key Strategy #3: “Quttinirpaaq offers the an important and truly unique opportunity to understand Arctic ecosystems and climate change in an environment used but relatively unchanged by human activity and situated close to the North Pole”.</p>
<p>What is the research application approval process?</p>	<p>More information on conducting research in national parks, as well as how to apply for a Research and Collection Permit, can be found online here: https://parks.canada.ca/nature/science/recherche-research/permis-permits. Nunavut Field Unit staff can also be contacted directly to provide information and answer questions: rechercheParcsNunavut-NunavutParksResearch@pc.gc.ca.</p>
<p>Prioritize co-led/developed research with Inuit and western researchers</p>	<p>See Objective 2.4.</p>
<p>Caribou research (keep community informed, include scat in investigations about the species, etc.)</p>	<p>A research strategy for nearby Qausuittuq National Park on Bathurst Island, which will particularly focus on Peary caribou, is currently under development. Connections and applicability to Quttinirpaaq National Park will be explored once prepared. The incorporation of Inuit Qaujimajatuqangit into all park-related matters, especially research, is emphasized throughout the draft management plan (see Objective 2.4 in</p>

	particular).
Consider establishing Lake Hazen as an official High Arctic Observatory	Quttinirpaaq is globally recognized for its international significance in studying the impacts of climate change, with three operational bases already established and functioning successfully in different areas of the park. The financial and logistical restrictions for operating and maintaining further infrastructure is significant, and perhaps environmentally irresponsible considering that concern has already been expressed regarding the impact of the current level of activity in the Lake Hazen Basin.
General Questions About Quttinirpaaq, Management Planning, and Parks Canada	
What is a management plan? What does it do? “Will the plan make its way to Parliament?”	Information on the management planning process can be found on the Parks Canada Quttinirpaaq webpages: https://www.pc.gc.ca/pn-np/nu/quttinirpaaq/info/plan/apercu-overview .
What is the role of the JPMC?	Inuit and Parks Canada manage Quttinirpaaq National Park cooperatively, and the Quttinirpaaq Joint Park Management Committee is the joint Inuit/Government parks planning and management committee established through the IIBA because of Article 8.4.11 of the <i>Nunavut Agreement</i> . Their role is to advise Parks Canada, the Minister responsible for national parks, the Nunavut Wildlife Management Board, and other agencies on all matters related to park management. Learn more about how Inuit and Parks Canada work together to manage Quttinirpaaq here: https://www.pc.gc.ca/pn-np/nu/quttinirpaaq/info .
What do Parks Canada staff do in the park?	Research and monitoring, wildlife observations, species conservation projects, visitor welcome, orientation, and education sessions, and maintaining infrastructure are a few of the projects completed in the park. More information about Quttinirpaaq and the various activities that occur in the park can be found online here: https://www.pc.gc.ca/pn-np/nu/quttinirpaaq .
What are major hiking routes in the park?	More information on activities and experiences available to visitors to Quttinirpaaq is available here: https://parks.canada.ca/pn-

	np/nu/quttinirpaaq/activ . Contact Parks Canada staff to discuss further.
Are drones permitted?	Drone use is currently not permitted in Quttinirpaaq National Park, unless special permission is granted through the permitting process. Policy and regulations regarding the use of drones are the responsibility of Transport Canada.
Information about ecology/wildlife in the park (e.g., is there arctic char found in Lake Hazen? What does Parks Canada know about wolf populations and location of dens?)	General information about nature and science in Quttinirpaaq can be found online here: https://parks.canada.ca/pn-np/nu/quttinirpaaq/nature .
Don't cancel the recreational fishing ban!	No changes are proposed to the prohibition on recreational fishing in the park through this draft management plan.
Zoning	
What is zoning? What does each zone mean?	<p>Parks Canada's national park zoning system is an integrated approach to the classification of land and water areas in a national park. It is intended to outline the protection goals for each area and guide appropriate use or activities</p> <p>to designate areas of land or water where particular activities can occur based on the ability to support those uses in those areas. The zoning system has five categories:</p> <ul style="list-style-type: none"> ● Zone I - Special Preservation ● Zone II - Wilderness ● Zone III - Natural Environment ● Zone IV - Outdoor Recreation ● Zone V - Park Services <p>Only three zones are included within Quttinirpaaq National Park (Zone I, II, and III). The draft plan is consistent with Section 8.2.8 of the Nunavut Agreement, which states that "each National Park in the Nunavut Settlement Area shall contain a predominant proportion of Zone I - Special Preservation and Zone II - Wilderness". Minor editorial changes</p>

	<p>have been made to the draft plan to provide additional context on the meaning and significance of each zone used in the park.</p> <p>Zoning in national parks does not apply to Indigenous access and activities related to the exercise of rights. The focus of zoning is to control visitor use, and Indigenous populations exercising rights-based activities are not considered “visitors” to the park.</p>
<p>Lake Hazen/Tasaliuk Basin Special Management Area:</p> <p>Is this an administrative change or a result of increased traffic to the area? Should the plan include measures to provide warning if increased visitation/use is causing problems?</p> <p>Subdivide further to include certain areas that remain Zone I within the Special Management Area?</p>	<p>The change is largely administrative in the sense that it was not prompted by an increased number of visitors to the area. In reality, the area is unlikely to ever host many visitors, but the change in zoning approach recognizes that there are opportunities for visitors to explore this special area in a way that is safe and consistent with Parks Canada zoning in other locations.</p> <p>A measure in Objective 1 notes that re-zoning certain areas to Zone I may be considered should evidence justify the action due to noted negative impacts on ecological and/or cultural values of the area.</p>
<p>Are there any situations where the FUS and JPMC would authorize motorized vehicle use on known critical habitat? Should visitors be allowed to access critical habitat unsupervised?</p>	<p><i>Peary Caribou:</i> Generally, motorized vehicle uses on known critical habitat is prohibited. However, depending on the type and timing of the activity, it may be permitted if it can be demonstrated via a formal impact assessment that appropriate mitigation measures and/or conditions can be successfully implemented to ensure minimal impact or disturbance. For example, guided snowmobile trips or research activities on the sea ice at Tanquary Fiord, which is a motorized zone (Zone III) and identified as critical habitat for Peary caribou, may be permitted subject to appropriate impact assessment and approval/authorization.</p> <p><i>Porsild's Bryum:</i> Given the very limited number of visitors to the park, at this time, Parks Canada staff have assessed that controlling access/mitigating any</p>

	<p>potential impacts to Porsild's Bryum critical habitat (Zone I) in Tanquary Fiord is possible through education and orientation of visitors. Motorized vehicle access is generally not allowed in Zone I areas; however, exceptional circumstances may apply where there is a threat to human life or formal impact assessments can demonstrate that appropriate mitigation measures can be implemented to minimize impact and/or disturbance.</p>
<p>What zones might/could address Peary caribou protection in the park?</p>	<p>A recovery strategy for critical terrestrial habitat for Peary Caribou is currently under development. Parks Canada is not the lead authority in the development of this strategy but will work closely with Environment and Climate Change Canada on its ongoing development.</p>
<p>Do rangers need permits to access the park? What about when they are working with the Department of National Defence?</p>	<p>In general, if Rangers are working collaboratively with staff from another government department, park visitors, etc. (i.e., anyone who is not a beneficiary of the Nunavut Agreement), a permit must first be acquired. Please contact Parks Canada staff for any questions about permit requirements.</p>
<p>It is important that community members are aware of the zoning of the park</p>	<p>While it was stressed and generally well understood that zoning does not apply to Inuit exercising rights-based activities within While providing information about zoning, staff were clear to emphasize that zoning restrictions do not and will never apply to Inuit exercising rights-based activities in Quttinirpaaq or any of the Parks Canada sites in Nunavut. Nevertheless, it is important that the concept is well understood in order for Inuit and Parks Canada to effectively work together in protecting the lands within Quttinirpaaq. Further, ensuring that zoning is well understood in communities will promote the dissemination of accurate information to any Quttinirpaaq visitors who may be passing through Resolute and/or Grise Fiord.</p>

2023

Quttinirpaaq

National Park of Canada

Management Plan

DRAFT

Foreword

|

DRAFT

Quttinirpaaq Joint Park Management Committee



DRAFT

QIA

DRAFT

Nunavut Wildlife Management Board

DRAFT

Recommendations

Recommended and original signed by:

Ron Hallman
Chief Executive Officer
Parks Canada

Andrew Campbell
Senior Vice-President, Operations
Parks Canada

Jenna Boon
Field Unit Superintendent
Nunavut Field Unit
Parks Canada

Liza Ningiuk
Chair
Quttinirpaaq Joint Park Management Committee



DRAFT

Note to Readers

This document makes reference to articles of the 1993 ***Agreement Between the Inuit of the Nunavut Settlement Area and Her Majesty The Queen in Right of Canada (Nunavut Agreement)*** and the 2001 ***Inuit Impact and Benefit Agreement for Auyuittuq, Quttinirpaaq and Sirmilik National Parks*** (IIBA). These documents provide a frame of reference and outline obligations for cooperative management of national parks in Nunavut. It is recommended that readers familiarize themselves with these documents to fully understand the context for managing Quttinirpaaq National Park. Copies of both documents can be obtained by contacting Parks Canada or the Qikiqtani Inuit Association.

DRAFT

Executive Summary

Located on northern Ellesmere Island, Quttinirpaaq National Park is Canada's northernmost national park, representing the Eastern High Arctic Natural Region in Canada's National Park System Plan. Initially established as a National Park Reserve in 1988, Quttinirpaaq National Park protects 37,775km², and is the country's second largest National Park. The park's landscape is dominated by glaciers and mountains and includes a variety of uniquely adapted ecosystems, resulting in protection of substantial biodiversity.

Together, Parks Canada and Inuit are managing Quttinirpaaq National Park through the Joint Park Management Committee as outlined in the *Nunavut Agreement* and the *Inuit Impact and Benefit Agreement for Auyuittuq, Sirmilik and Quttinirpaaq* (IIBA). This management committee advises the Minister on any matters pertaining to park management for ministerial approval.

This management plan replaces the 2009 management plan for Quttinirpaaq National Park and reflects the priorities of Parks Canada and Inuit partners. The plan outlines the importance of Quttinirpaaq to multiple groups, including Inuit from the adjacent communities of Resolute Bay and Grise Fiord, whose ancestors lived here. Quttinirpaaq is a place of global importance to understand the impacts of climate change.

The vision articulated in this plan underlines the importance of conservation, partnerships and enhancement of opportunities for appreciation and understanding of the park's natural and cultural significance. Three key strategies, a zoning plan and an area management approach are identified to guide management activities to realize the park's vision.

Key Strategy #1 Honoring Shared Commitments

Core objectives of the *Nunavut Agreement* are to encourage self-reliance and to support the cultural and social well-being of Inuit. This strategy addresses Parks Canada's goals to meet its *Nunavut Agreement* and IIBA obligations. Parks Canada works with other federal departments to be an active member of the associated communities of Resolute Bay and Grise Fiord.

Key Strategy #2 Working Together

Conservation is more successful when aligned with regional initiatives for activities inside and outside the park. Quttinirpaaq management will be guided by the Inuit Societal Value of *Qanuqtuurniq* (being innovative and resourceful) to pro-actively seek out ways to work with others to ensure continued success. Effective two-way communication and relationship building with communities is essential to realize this success.

Key Strategy #3 Learning from People and Land

Quttinirpaaq management will bring together science and Inuit Qaujimajatuqangit to foster *Avatittinnik Kamatsiarniq* (respect and care for the environment) and increase our understanding of the natural and cultural values of the park and the greater region. This knowledge will be used to encourage global appreciation and understanding of the High Arctic, the impacts of climate change and humanity's ingenuity and ability to adapt to challenges and changing circumstances.

DRAFT

Table of Contents

Foreword	iii
Recommendations	xi
Note to Readers	xiii
Executive Summary	xv
1.0 Introduction	1
2.0 Significance of Quttinirpaaq National Park.....	4
3.0 Planning Context	5
4.0 Vision	7
5.0 Key Strategies	8
6.0 Zoning	12
7.0 Lake Hazen/Tasialuk Basin Management Area	17
8.0 Summary of Strategic Environmental Assessment	19
9.0 Acknowledgements	20
 Maps	
Map 1: Regional Setting.....	2
Map 2: Quttinirpaaq National Park	3
Map 3: Quttinirpaaq National Park Zoning	13
Map 4: Tasialuk/Lake Hazen Management Area.....	18

DRAFT

1.0 Introduction

Parks Canada Agency manages one of the finest and most extensive systems of protected natural and historic places in the world. The Agency's mandate is to protect and present these places for the benefit and enjoyment of current and future generations. Future-oriented, strategic management of each national park, national marine conservation area, heritage canal, and those national historic sites administered by Parks Canada supports the Agency's vision:

Canada's treasured natural and historic places will be a living legacy, connecting hearts and minds to a stronger, deeper understanding of the very essence of Canada.

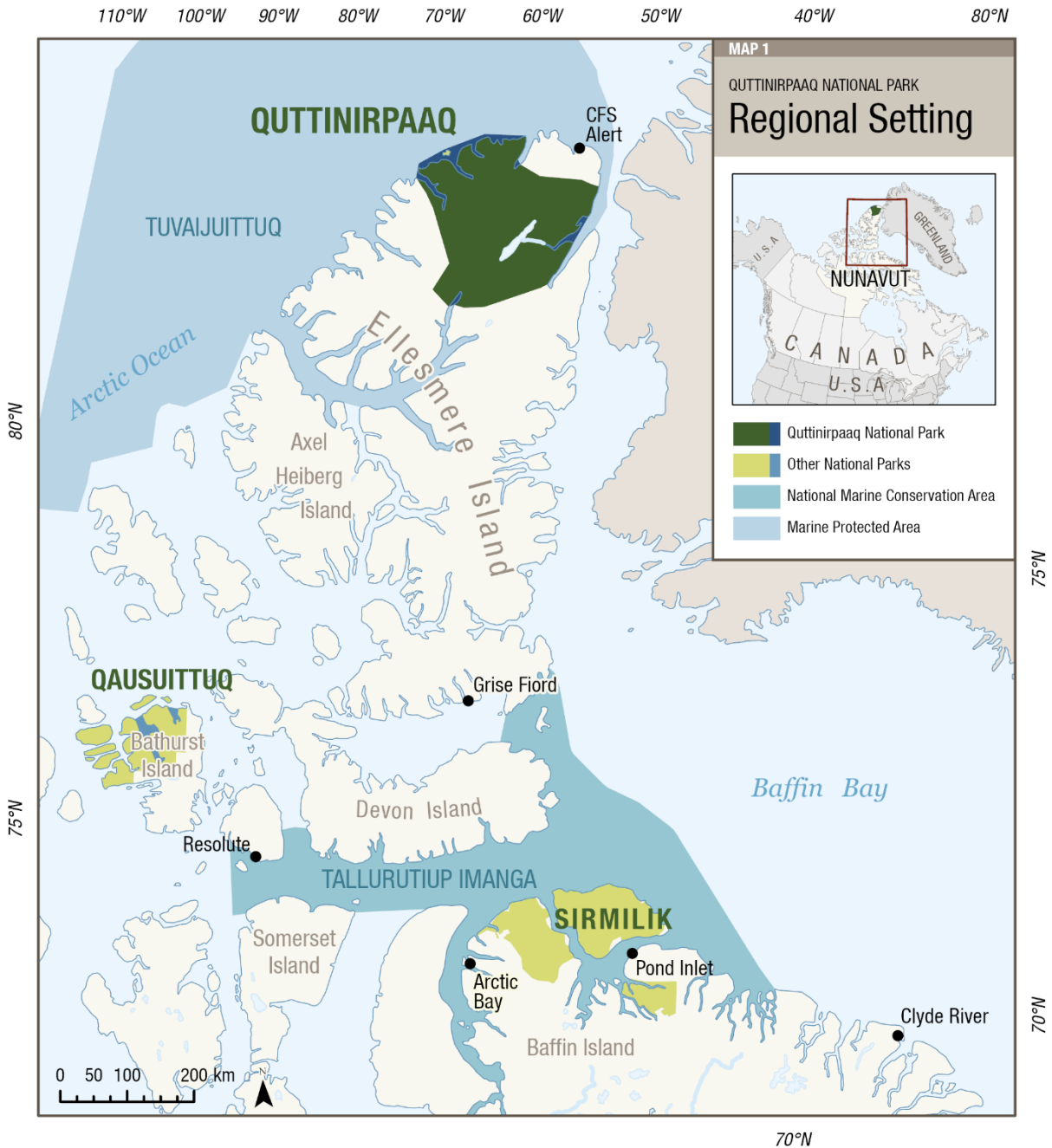
The *Canada National Parks Act* and the *Parks Canada Agency Act* require Parks Canada to prepare a management plan for each national park. Implementing the *Nunavut Agreement* requires this plan be developed by a Park Planning Team, consisting of an equal number of members appointed by Parks Canada and the Qikiqtani Inuit Association (QIA). The *Quttinirpaaq National Park of Canada Management Plan, 2023* has been reviewed by QIA, and approved by the Quttinirpaaq Joint Park Management Committee (JPMC), the Nunavut Wildlife Management Board, and the Minister responsible for Parks Canada. The process of stakeholder engagement and approvals ensures accountability to Canadians, while outlining how park management will achieve measurable results in the implementation of the *Nunavut Agreement*, the *Inuit Impact and Benefit Agreement for Auyuittuq, Quttinirpaaq and Sirmilik National Parks* (Baffin IIBA), and Parks Canada Agency's mandate.

The Quttinirpaaq JPMC, Inuit from the park's two adjacent communities, and other Canadians were engaged by the Park Planning Team to shape the future direction of the national park through the management planning process. This plan sets clear, strategic direction for the management of Quttinirpaaq National Park (the park) by articulating a vision, key strategies and objectives. As per the Baffin IIBA, Parks Canada, in cooperation with QIA, will report annually on progress toward achieving the plan objectives and will review the plan every ten years or sooner if requested by the JPMC, QIA or Parks Canada.

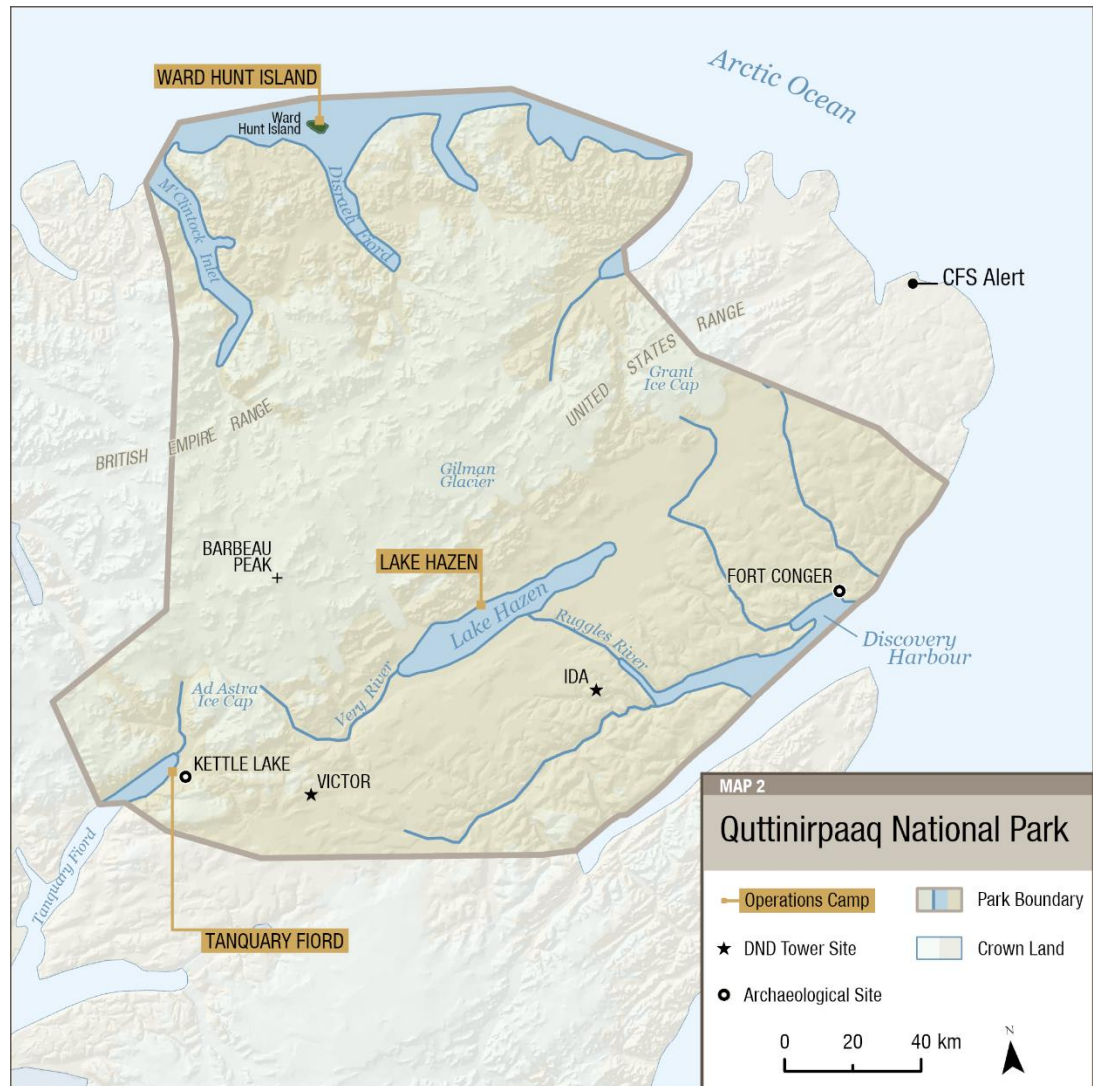
This plan is not an end in and of itself. Parks Canada and Inuit will maintain an open dialogue on the implementation of the management of Quttinirpaaq National Park, to ensure that it remains relevant and meaningful.

It's a beautiful land if it's a beautiful day, but if it's a bad day, it's still a beautiful land.

Bernard Maktar
JPMC member from Pond Inlet



Map 1: Regional setting of Quttinirpaaq National Park. Other Parks Canada protected sites in the area include Qausuittuq National Park on northern Bathurst Island, and Tallurutiup Imanga National Marine Conservation Area. Tuvaijuittuq, which includes the marine waters off northern Ellesmere Island, is the first Marine Protected Area to be designated for interim protection by ministerial order under the *Oceans Act*, limiting human activities in the area for up to five years.



Map 2: Quttinirpaaq National Park boundary. Park operations camps at Tanquary Fiord, Lake Hazen, and Ward Hunt Island are highlighted.

Inuit used to live up here when they travelled only by dog team. Their sites are scattered all through here. Whether during dark season or only in the summer, it's amazing they could do that. When you go up there and start learning about them, it makes you wonder, how did they do it?

How did they survive?

It baffles your mind.

When you come up here, your mind wanders backwards to how it might have been.

That's what makes the park even more special.

Liza Ningiuk
JPMC and PPT member from Grise Fiord

2.0 Significance of Quttinirpaaq National Park

Quttinirpaaq National Park is Canada's northernmost and second largest national park, covering an area of 37,775km² (Map 1). Quttinirpaaq is an Inuktitut word meaning "at the top," referring to its location at the top of the world. It was named by the people of Grise Fiord and Resolute Bay in 2001. The park's landscape is dominated by glaciers and mountains yet includes a remarkable diversity of unique and localized ecosystems, including a polar desert, the deepest freshwater lake north of the Arctic Circle, and distinct microbial systems. Along the northern coast, glaciers spill into deep marine fiords, and multi-year ice shelves support unique, ice-dependent communities. Some of the area's lowlands and wetlands are surprisingly lush, with a remarkable variety of plants and animals for a region shrouded in snow and darkness for half the year. Muskoxen, small herds of Peary caribou, Arctic wolves, Arctic hares, and a variety of birds can be found here.

Quttinirpaaq plays a significant role in understanding human history in the Arctic, with some of the oldest and one of the densest concentrations of prehistoric Arctic archeological sites within its boundary. Dating back over 4000 years, these sites provide evidence of the migration of Independence I people from the sub-Arctic to Greenland along a route known as the Muskox Way. The area is important to today's Inuit as their direct ancestors, Thule Inuit, travelled and lived here for several hundreds of years; they came to this area about 1000 years ago and evidence of their year-round presence is found throughout the park. The Lake Hazen/Tasialuk Basin Area (Map 4) has been an important hunting and fishing ground for Greenland Inughuit until quite recently.

This region became known to southern Canadians in the era of the Cold War (1947-91) due to the Canadian Defence Research Board (DRB), who established three camps in what is today Quttinirpaaq National Park. The DRB conducted integrated scientific research spanning meteorology, glaciology, oceanography, and other disciplines between the 1950s and 70s. Their research, and subsequent studies in these northernmost ecosystems, has been informing science for well over six decades. The park is viewed as a global point of reference for the effects of climate change. As the impacts of climate change are more pronounced near the poles, observations made this far north can provide a window into changes and challenges anticipated for southern regions.

Quttinirpaaq National Park represents the Eastern High Arctic Natural Region within the Canadian National Park's System Plan. The park's eastern shores and ice shelves are within the Remnant Arctic Multi-Year Sea Ice and Northeast Water Polynya Ecoregion, which the International Union for the Conservation of Nature proposes to have outstanding universal value. The Canadian Department of Fisheries and Oceans considers this ecosystem an Ecologically and Biologically Significant Area of the Arctic Archipelago Region.

Quttinirpaaq National Park was first established as a Park Reserve in 1988. Following the signing of the *Nunavut Agreement* in 1993, the Baffin IIBA was negotiated with QIA and signed in 1999. Quttinirpaaq was subsequently established as a National Park with a cooperative management committee (the JPMC) when the *Canada National Parks Act* came into force in 2001. The park is a tangible expression of Canadian Arctic Sovereignty.

In 2004, Canada included Quttinirpaaq National Park on its tentative list for future nomination for inclusion on the United Nations Educational, Scientific and Cultural Organization (UNESCO) list of World Heritage Sites. Proposed under four separate criteria – successive human occupation, natural beauty and superlative natural phenomena, geological processes representing major stages of earth's history, and the presence of a diversity of arctic species – Canada believes that the natural and cultural values of Quttinirpaaq are globally significant.

3.0 Planning Context

Remote Location: As one of the most remote and least visited national parks in Canada, Parks Canada faces some unique challenges with Quttinirpaaq National Park. There are no roads to get to the park, and no aircraft stationed in Grise Fiord, still the closest community at over 600 km away. The airport in Resolute Bay, where charter flights to the park depart, is over 900 kilometers away, resulting in significant financial and environmental operating costs.

Legislative basis of the park: The *Canada National Parks Act* and associated regulations provide the legal framework for managing Quttinirpaaq National Park. Importantly, the *Nunavut Agreement* prevails where any legislative inconsistencies or conflicts arise. Specific zoning parameters are outlined in the *Nunavut Agreement*, stating that “each National Park in the Nunavut Settlement Area shall contain a predominant proportion of Zone I - Special Preservation and Zone II – Wilderness.”

Cooperative management: The *Nunavut Agreement* defines the rights of Inuit and formalizes the arrangement for potential joint Inuit/Government parks planning and management of Parks Canada places in Nunavut. The Baffin IIBA defines this management structure and establishes the requirements, composition, and responsibilities of a Joint Park Management Committee (JPMC). The JPMC, like the Park Planning Team, consists of an equal number of members appointed by PCA and QIA, who act impartially and in the public interest, rather than as representatives of their appointing body. The JPMC advises on all matters relating to park management, including the development of this plan. The Baffin IIBA further outlines the management plan development and approval process for Quttinirpaaq and requires the plan be approved by the JPMC before public consultation and before ministerial approval.

Benefits for Inuit in Nunavut: An objective of the Baffin IIBA is to provide opportunities for Inuit in the adjacent communities to benefit from the establishment, planning, management, and operation of the park. The two adjacent communities, as defined by the Baffin IIBA, are Resolute Bay and Grise Fiord. Both have populations under 200. As previously stated, these communities are still a substantial distance from the park, and few Inuit go to the park as they face the same access challenges as Parks Canada. Currently, the park’s operating season is limited to two months in the summer, which can still be a long time away from home for staff from a culture with strong family ties. No Quttinirpaaq-specific positions are based in either community. The above factors all contribute to the challenge of recruitment, retention, and community engagement. This management plan is a renewed commitment from Parks Canada to do better in fulfilling benefits for Inuit through the specific targets outlined herein, including implementation of a renewed Nunavut Field Unit Inuit Employment Plan (2019).

Inuit Qaujimajatuqangit: Inuit Qaujimajatuqangit refers to the knowledge and understanding of all things that affect the daily lives of Inuit, and the application of that knowledge for the survival of a people and their culture. It is a knowledge that has sustained the past and that is to be used today to ensure an enduring future. Incorporating Inuit Qaujimajatuqangit into the management of Quttinirpaaq National Park is a priority. Inuit Qaujimajatuqangit should be an overarching planning tool that influences all other priorities. Many targets in this management plan are aimed at better incorporating Inuit Qaujimajatuqangit into the management of the park.

Landscape-level Conservation Initiatives: Quttinirpaaq National Park is not the only site administered by Parks Canada in the High Arctic region of Nunavut: Qausuittuq National Park on Bathurst Island was established in 2015 following the ratification of a separate IIBA that outlines obligations similar to the Baffin IIBA, and the Tallurutiup Imanga National Marine Conservation Area is associated with not only Resolute Bay and

Grise Fiord, but also Pond Inlet, Arctic Bay, and Clyde River. In addition, Tuvaijuittuq, the High Arctic Basin off the northern shores of the Arctic Archipelago, came under interim protection in 2019 as a Marine Protected Area through the authority of Fisheries and Oceans Canada. These new protected areas significantly change the conservation landscape and, alongside the already established Migratory Bird Sanctuaries and National Wildlife Areas, provide opportunities for federal departments and agencies to effectively work together with and within the same adjacent communities.

Climate Change: The effects of climate change are directly impacting the environment of the park as well as its users. Staff at the main operations camp and visitor hub, Tanquary Fiord, are seeing changes to the fresh water source, which will require attention within the lifespan of this management plan. Erosion events witnessed throughout the park are thought to be increasing, a belief substantiated by Parks Canada's work at Fort Conger and other recent studies in the Canadian Arctic. Fort Conger is both a cultural and a contaminated site on the eastern shore of the park (Map 2), where monitoring reveals an eroding coastline that is increasing the risk of contaminants being deposited into the Arctic Ocean. Parks Canada staff anticipate future changes but cannot predict the level of change. Increased attention to asset management and safety is therefore warranted, as are collaborations with other partners and institutions (e.g., universities) to identify specific risks and to develop strategies that will address or mitigate potential impacts.

Scientific research: Northern Ellesmere Island has been of interest to the scientific community since the British Arctic Expedition, led by Captain George Nares from 1875-76. Lieutenant Adolphus Greely established an American research base at Fort Conger for the first International Polar Year, 1882-83, but it was during the first International Geophysical Year, 1957-58, that the area became a veritable hub for science. The park's present infrastructure makes it an invaluable asset to the operations of Natural Resources Canada's Polar Continental Shelf Program (PCSP), which supports services for all High Arctic research projects. Its proximity to the pole and relatively low impact from human activity make it an ideal place for climate change-related research and training. Findings are discussed at forums around the globe and recorded in professional publications.

Visitation and use: Visitation to Quttinirpaaq National Park is greatly affected by access since cruise ships and charter flights are the only ways to get to the park. Cruise ships can bring in upwards of 150 people for short visits, concentrated in a small area. Between 2008 and 2017, the average annual visitation on years when no cruise ship visited was 17. During this period, there were three years when ships did land, and the park saw an average of 215 visitors in those years. An average of 20 researchers are in the park annually, spending anywhere from 5 days to 2 months, and while 40-150 Department of National Defense personnel may use the airstrip at Tanquary Fiord during the operating season, they rarely spend a night.

State of the Park Assessment: The *Quttinirpaaq National Park of Canada State of the Park Assessment* (2018) shows significant progress has been made to green park operations and decrease the overall footprint. All camps use solar energy as their primary source of electricity. Fuel management has been upgraded for greater environmental protection. A great deal of waste (metal, waste fuel, empty drums, old equipment) has been removed from the park. Tanquary Fiord camp is the park's primary operations base, and, with its long airstrip and deep fiord, has evolved to serve as the central node for visitor activity. While currently under review, Parks Canada has been running a charter program since 2014 to facilitate visitor access and has built the supporting visitor accommodation at Tanquary Fiord. Parks Canada has also partnered with a tourism outfitter to provide parts of the program offer. The Ecological Integrity and Cultural Resource Monitoring Program - based on the Cultural Resource Inventory - are now established for the park and a first analysis of data was performed as part of the *State of the Park Assessment* (2018). Two of the four cultural resource indicators show good results, one was fair, and the final one was not rated.

4.0 Vision

Quttinirpaaq National Park is perched at the top of the world. Windswept and glacier carved, the years of change have traced their history across the expanse of northern Ellesmere Island and laid bare the history of geologic formation. Numerous cultural sites scattered throughout the expanse of the park bear testament to human ingenuity and adaptability, where people took advantage of the natural routes and gentler climate provided by the landscape.

Quttinirpaaq holds value as a place uniquely situated to provide insight into the state of the Arctic and the changing global environment. Relatively undisturbed by current human activity, Quttinirpaaq's unique and diverse ecosystems are healthy and remain connected to the greater systems surrounding it. Though signs of climate change are visible, life thrives here, and cultural resources are treasured and protected.

Mutual trust and respect are the foundations of building knowledge: Inuit Qaujimaqatugangit and science are equally essential to our understanding and management of the park.

Quttinirpaaq National Park welcomes park visitors, Inuit, and other park users; meaningful experiences foster appreciation for the park as well as the Eastern High Arctic Region. The park's infrastructure and assets will adequately serve all park user needs and reflect a thoughtful, low-impact approach that considers future change. Parks Canada has strong relationships to support the achievement of its mandate and its commitments to cooperatively manage the park with Inuit. Strong connections between the park, local communities, Nunavummiut, and national and international audiences foster appreciation and understanding of Quttinirpaaq and the greater region. Innovation and resourcefulness guide Parks Canada's success in fulfilling all aspects of its mandate and commitments.

Management of Quttinirpaaq National Park will be guided by these Inuit Societal Values:

Avatittinnik Kamatsiarniq – Respect and Care for the Land

Piliriqatigiinniq/Ikajuqtigiinniq – Working Together for a Common Cause

Tunnganarniq – Fostering Good Spirits by Being Open and Welcoming

Qanuqtuurniq – Being Innovative and Resourceful

Pijitsirniq – Serving and providing for family and/or community

My first year working there I fell in love with the place right away and kept going back. I've never seen anything so beautiful as those mountains and valleys, with all the wildlife.

I will forever love this place. It's a big part in my heart for that place.

Tabitha Mullin
JPMC member from Resolute Bay

5.0 Key Strategies

Three key strategies describe the integrated approach to the management of Quttinirpaaq National Park for the next ten years. These strategies are based on priorities determined by the Park Planning Team, the Joint Park Management Committee, and Parks Canada, and are consistent with Canada's Arctic Policy Framework (released September 10, 2019). Meeting the objectives and targets of each strategy will direct how human and financial resources are allocated to realize our shared vision. Many of the targets are cross-cutting and serve more than one objective. Where applicable, references to relevant Articles in the Baffin IIBA have been included to demonstrate the direct link between management plan commitments and IIBA implementation.

Target dates are relative to the date of signing of the plan, and unless otherwise specified, targets are to be met within the ten-year life of the plan or are ongoing commitments.

Key Strategy #1 *Honouring Shared Commitments*

Core objectives of the *Nunavut Agreement* are to encourage self-reliance and the cultural and social well-being of Inuit. The Baffin IIBA is a tool used to honour Inuit rights and provide opportunities for Inuit to benefit from the establishment, planning, management, and operation of the park, particularly in the adjacent communities. Indeed, Parks Canada works to be an active member of Resolute Bay and Grise Fiord, and to collaborate with other federal departments to provide capacity-building opportunities for Inuit participation in park management, economic, and employment roles. Guided by the Inuit Societal Value of *Pijitsirniq* (serving and providing for family and/or community), this strategy outlines objectives and targets through which Parks Canada will honour its obligations in the *Nunavut Agreement* and the Baffin IIBA to provide benefits to Inuit related to Quttinirpaaq National Park.

Objective 1.1 Inuit continue to be actively involved in the management of Quttinirpaaq.

Targets:

- 1.1.1 An orientation for new and returning JPMC members is developed and implemented within the first two years. Parks Canada will reach out to QIA to invite them to co-develop this product (Baffin IIBA Art. 5.1.29).
- 1.1.2 At least one Inuit Knowledge Working Group project will be initiated within seven years (Baffin IIBA Objective (e)).
- 1.1.3 Park management will actively promote and facilitate Inuit-led research projects from adjacent communities within two years (Baffin IIBA Art. 6.1.16).

Objective 1.2 Opportunities for greater Inuit involvement in employment and increased economic benefits are realized in the adjacent communities.

Targets:

- 1.2.1 At least one position associated with Quttinirpaaq extending beyond the operational season will be located in Resolute Bay or Grise Fiord (Baffin IIBA Art. 9.1.1).
- 1.2.2 Inuit staff from Resolute Bay and Grise Fiord are mentored and provided training to achieve their career goals (Baffin IIBA Art. 9.2.1).
- 1.2.3 The Baffin IIBA Economic Opportunities Fund held by Kakivak is promoted in the adjacent communities and Inuit are supported to develop opportunities and applications for that and other funding (Baffin IIBA Art. 10.3.2).
- 1.2.4 Parks Canada will contribute to at least one regional skills development and capacity building initiative in Resolute Bay or Grise Fiord every two years, e.g., tourism, research (Baffin IIBA Art. 9.2.4).

Objective 1.3 Park management, planning and operations will provide opportunities for Inuit from Resolute Bay and Grise Fiord to develop stronger connections to the park.

Targets:

- 1.3.1 Within three years, create at least two learning activities that could be led by a community member to communicate knowledge and stimulate interest in the park to the communities of Resolute Bay and Grise Fiord.
- 1.3.2 The JPMC will at minimum hold two meetings in the park during the life of this management plan.
- 1.3.3 At least two non-JPMC community members from each adjacent community visit the park once every three years through Parks Canada programming.
- 1.3.4 An Inuk Youth Representative position (non-voting) on the JPMC is established within one year and maintained for the life of the plan.
- 1.3.5 Complete an Inuktitut Place Names project. These names will be used and promoted by Parks Canada through our maps and materials.
- 1.3.6 Facilitate the sharing of research through a community event and other means (e.g., social media, radio, newsletter, schools).
- 1.3.7 Parks staff will facilitate connections between researchers and communities.

Key Strategy #2 *Working Together*

Quttinirpaaq National Park supports a number of different user groups: it is traditional home and hunting ground for Inuit, a hub for northern research, a staging point for military operations, and a place for adventuring. Its remoteness, however, means access is a financial and logistical challenge for everyone, which makes working together on shared goals essential. For Parks Canada, major challenges include the upkeep of infrastructure that is key to program implementation, delivery of visitor opportunities, and enhancing our understanding of the park's natural and cultural heritage. Additionally, conservation is more successful when aligned with regional initiatives for activities inside and outside the park. Quttinirpaaq management will be guided by the Inuit Societal Value of *Qanuqtuurniq* (being innovative and resourceful) to pro-actively seek out ways to work with others to ensure continued success. Effective multi-lateral communication and relationship building with communities and key partners is essential to realize this success.

Objective 2.1 Quttinirpaaq has the appropriate level of safe, well-maintained infrastructure to support current and expected partners and users.

Targets

- 2.1.1 Within five years, needs of visitors, stakeholders, partners, researchers, and park operations will be considered in the development of an asset strategy to guide all future asset management.
- 2.1.2 User groups relying on the infrastructure in Quttinirpaaq support maintenance and operation of that infrastructure.
- 2.1.3 Formal agreements are in place for in-park facilities and their use.

Objective 2.2 The relationship between Parks Canada and the tourism industry is strengthened to foster meaningful tourism initiatives in the region.

Targets:

- 2.2.1 Promotional material for Quttinirpaaq is available for Resolute Bay and Grise Fiord businesses within one year.
- 2.2.2 Opportunities to promote tourism through non-government agencies and organizations with a mandate and interest in conservation, tourism, outdoor education, culture, and nature are pursued.

- 2.2.3 Continue working with commercial tourism operators to bring a sustainable number of visitors to the park.
- 2.2.4 Make connections between community members interested in tourism to the opportunities and support available for developing their skills and businesses.

Objective 2.3 Innovative approaches to address park management issues are fostered through collaboration, multi-lateral communication, and relationship building with partners and stakeholders.

Targets:

- 2.3.1 Collaborate with stakeholders to implement *Species at Risk Act* strategies and actions, specifically with regards to Peary caribou and Porsild's Bryum.
- 2.3.2 Collaborate with the management of Tallurutiup Imanga National Marine Conservation Area, Qausuittuq National Park and Polar Continental Shelf Program to maximize resource efficiency.
- 2.3.3 Seek opportunities to support the re-establishment of historical human ties to Greenland.
- 2.3.4 Finalize Memorandum of Understandings with Polar Continental Shelf Program within one year and Department of National Defense within three years, to guide our continued relations.
- 2.3.5 Work with Tuvaijuittuq (High Arctic Basin) and regional conservation initiatives as appropriate.

Objective 2.4 Through collaboration with researchers and consultation with communities, the research in Quttinirpaaq meets scientific priorities, community interests, and strengthens Inuit participation in research.

Targets:

- 2.4.1 Continue to host scientific research of national and global importance and encourage researchers to make data publicly available.
- 2.4.2 Research priorities are reviewed and updated with JPMC every five years.
- 2.4.3 There is research conducted in the park that reflects shared Parks Canada, JPMC, and community interests.
- 2.4.4 At least one Inuk researcher initiates a research project in the park and is supported by Parks Canada (Baffin IIBA Art. 6.1.16).
- 2.4.5 Encourage research projects that bring together *Inuit Qaujimajatuqangit* and Science.

Key Strategy #3 *Learning from People and Land*

This strategy underlines the opportunity Quttinirpaaq provides to learn from the unique coexistence Inuit share with land and wildlife. It is a place where we can study the effects of geologic forces and change in rocks, ice, and ecosystems over millions of years. Quttinirpaaq offers the opportunity to understand Arctic ecosystems and climate change in an environment situated close to the North Pole and used but relatively unchanged by human activity. Quttinirpaaq management will bring together science and Inuit Qaujimajatuqangit to foster ***Avatittinnik Kamatsiarniq*** (respect and care for the environment) and increase our understanding of the natural and cultural resources of the park and the greater region. This knowledge will be used to encourage global appreciation and understanding of the High Arctic, the impacts of climate change, and humanity's ingenuity and ability to adapt to challenges and changing circumstances.

Objective 3.1 Public outreach tools and programs include Inuit Qaujimajatuqangit and effectively communicate the values of Quttinirpaaq to all Canadians and beyond.

Targets:

- 3.1.1 One outreach activity showcasing a story based on an understanding of Inuit Qaujimajatuqangit and science of Quttinirpaaq is available for staff to share and present within two years, with a priority on youth audiences where possible.
- 3.1.2 Research and monitoring activities in the park are showcased on the Quttinirpaaq website and communicated to the communities annually.
- 3.1.3 Provide the Cultural Resource Inventory to the Qikiqtani Inuit Association, Inuit Heritage Trust, and Government of Nunavut.
- 3.1.4 Opportunities to access Quttinirpaaq's cultural resources virtually are increased and enhanced.
- 3.1.5 Efforts are made to advance preparation of a nomination for inscription on the list of World Heritage Sites upon the advice and recommendations of management partners.
- 3.1.6 Opportunities to share research stories in innovative and collaborative ways with partners will be explored.

Objective 3.2 Research and ongoing monitoring programs in Quttinirpaaq National Park improve our knowledge and understanding of the park and Arctic ecosystems.

Targets:

- 3.2.1 Ecological Integrity and Cultural Resource monitoring programs provide usable data for making management decisions.
- 3.2.2 Within two years, a climate change vulnerability assessment of targeted park assets will have provided the necessary results to inform an asset strategy.
- 3.2.3 A protocol to monitor the impact of climate change on targeted cultural resources will be implemented within five years.
- 3.2.4 At least one ecological integrity indicator will be developed based on Inuit Qaujimajatuqangit.

Objective 3.3 User needs and the principles of environmental sustainability are met with appropriate infrastructure and improved learning opportunities.

Targets:

- 3.3.1 Quttinirpaaq's capacity with respect to visitor and park user numbers in a given year will be determined within five years.
- 3.3.2 A strategy to monitor, assess, and communicate the safety of major hiking routes in the park will be implemented within the first three years of this management plan.
- 3.3.3 Park visitor information and interpretive materials will be assessed, and an updated implementation plan will be created within two years of signing this plan.
- 3.3.4 Visitors to Fort Conger in the company of park staff have accurate information on the history of the site within two years.
- 3.3.5 Within five years, cruise ship guide training and site guidelines for Fort Conger ensures the safety of both visitors and the resources during cruise ship visits that are unaccompanied by park staff.

6.0 Zoning

Parks Canada's national park zoning system is an integrated approach to the classification of land and water areas in a national park and designates where activities can occur on land or water based on the ability to support those uses. The zoning system has five categories:

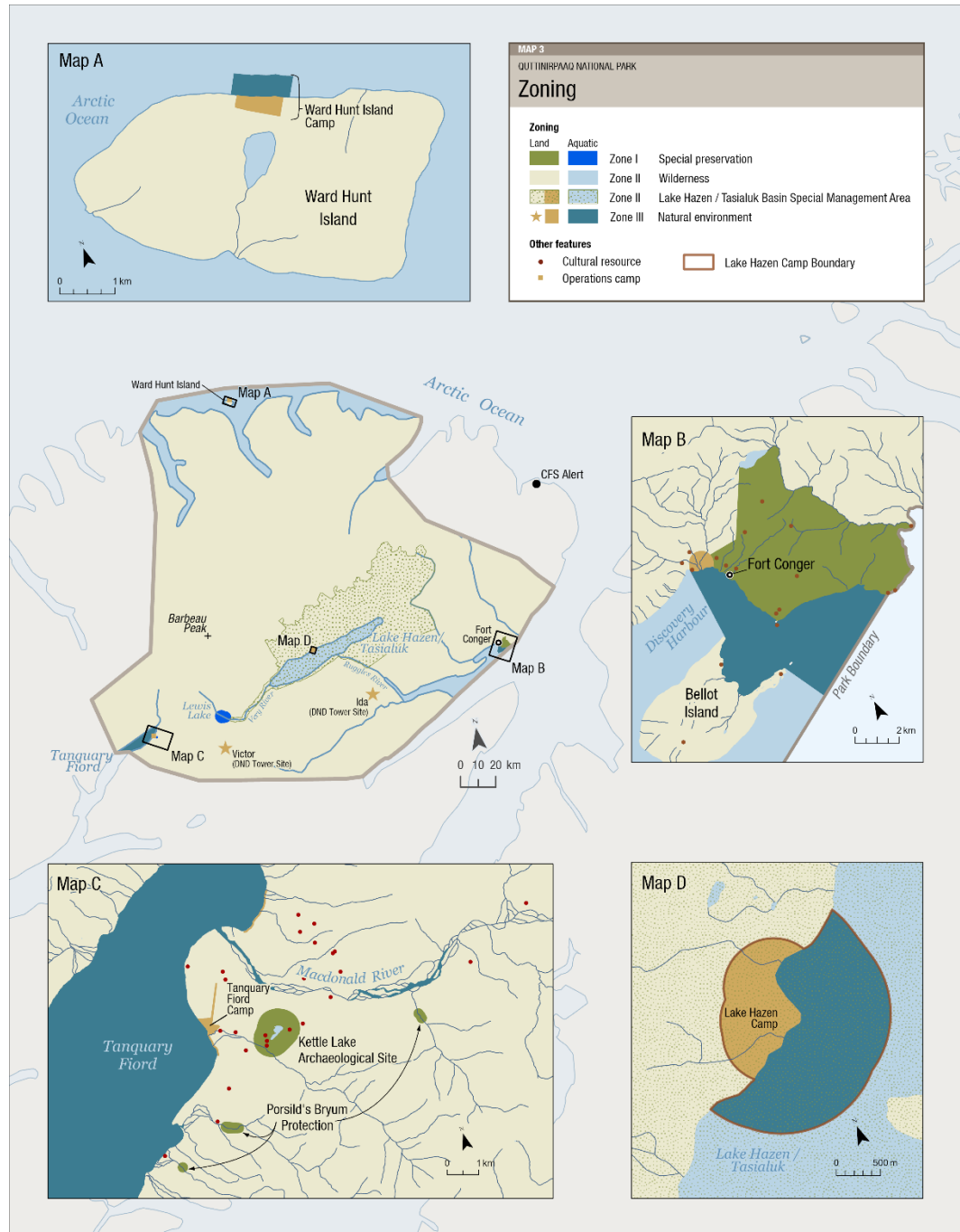
- Zone I - Special Preservation;
- Zone II - Wilderness;
- Zone III – Natural Environment;
- Zone IV - Outdoor Recreation; and
- Zone V - Park Services.

Three zones are used in Quttinirpaaq National Park: Zones I, II, and II (see Map 3). This zoning plan is consistent with Section 8.2.8 of the *Nunavut Agreement*, which states that “each National Park in the Nunavut Settlement Area shall contain a predominant proportion of Zone I - Special Preservation and Zone II – Wilderness”. Zoning provisions do not apply to Inuit exercising traditional harvesting rights within Quttinirpaaq National Park (*Nunavut Agreement*, Art. 5.7.16).

The major change in zoning from the previous 2009 management plan is the approach to the Lake Hazen/Tasialuk Basin, which has shifted to Zone II with a Special Management Area designation, as described in section 7.0 and Map 4.

Several Zone I sites have been added to conserve Porsild's Bryum, a recently identified and listed species at risk (Map 3c). Adjustments have also been made to the Zone III areas around airstrips and camps to accommodate current and projected use patterns.

Otherwise, zoning remains relatively unchanged from the previous management plan. The prohibition on sport fishing in Quttinirpaaq National Park, approved by the NWMB in 2006, remains in effect.



Map 3: Quttinirpaaq National Park zoning. In accordance with the *Nunavut Agreement*, Zone II – Wilderness is the predominant designation of the park. Inset maps A, B, C, and D highlight specific zoning at Ward Hunt Island, Fort Conger, Tanquary Fiord, and Lake Hazen respectively.

ZONE I: Special Preservation

Zone I provides strong protection to several of the unique natural and cultural features of Quttinirpaaq National Park. **Preservation is the key consideration, and visitor access may be prohibited or controlled.** Motorized use within these sites is not allowed, except for exceptional circumstances as permitted by the superintendent and upon the advice of the JPMC. Camping within the boundaries of a Zone I is not permitted.

There are six Zone I areas: Kettle Lake, Fort Conger, Lewis Lake, and three sites for the protection of Porsild's Bryum.

Kettle Lake: The suite of cultural resources around Kettle Lake are representative of the High Arctic and includes features from both the Thule and Independence I cultures. In addition to the large, visible features such as fox traps, tent rings, caches and hunting blinds, numerous smaller artifacts remain in situ, though some have been removed for conservation. Because of its proximity to the Tanquary Fiord base camp, it is an excellent opportunity for visitors to experience ancient and recent arctic history in the company of Parks Canada staff or a Parks Canada trained guide. While less preferred, independent day-use visitation is permitted with the support of a self-guided brochure, following orientation from park staff. Kettle Lake resources are monitored regularly.

Fort Conger: The buildings and historical artefacts at Discovery Harbour are known collectively as Fort Conger; together, they are the combined remains of American and European High Arctic Exploration base camps established by George Nares, Adolphus Greely, and Robert Peary between 1875 and 1909. Greely's 1881-1883 scientific studies were part of the First International Polar Year (a designated event of national historical significance), and the Peary Huts are designated "classified" by the Federal Heritage Building Review Office. The site is also uniquely situated to demonstrate the contributions Inuit made to the success of Arctic explorers. Contamination is a concern at the site, and appropriate signage has been installed. While the features themselves are considered vulnerable and at risk due to climate change, the obstacles and limitations are such that a relatively low level of human visitation is expected and does not need to be prevented. A target of this plan is to develop a strategy for sharing this site through Parks Canada trained guides. Until that time, visitors must be accompanied by Parks Canada employees. Toddlers and infants, who are more susceptible to the contaminants, are not allowed to visit the site.

Lewis Lake: Arctic wolves have been denning in the vicinity of Lewis Lake for what appears to be several thousand years. The den site here is integral to the seasonal cycle of wolf populations, and there is a history of past disturbance to the pack. The lake lies along the major long-distance hiking route in the park. A Zone I designation provides a 3 km buffer surrounding the lake and den. Non-motorized access is permitted but camping is not. All visitors will be informed of the importance of not disturbing the wolves.

Porsild's Bryum Protection: Porsild's Bryum is a small, rare cushion moss growing in a limited number of colonies globally. It favours moist, shady locations at higher elevations. Listed as threatened by the *Species at Risk Act*, there are three known populations in Nunavut, and they are all in the Tanquary Fiord area of Quttinirpaaq National Park. These three pockets are considered critical habitat and classified Zone I for their protection. While access is permitted in these areas, the visitor orientation stresses the importance of walking on hard surfaces and not stopping to linger, as the moss could be inadvertently damaged. The National Recovery Strategy to monitor known populations will be implemented and surveys for additional populations will take place during the

lifespan of this plan, subject to funding. If found, appropriate protective management actions will be taken on advice from species experts and the JPMC.

ZONE II: Wilderness

These extensive areas provide visitors with the opportunity to experience relatively undisturbed representations of a natural High Arctic region and will be conserved in a wilderness state. ***The perpetuation of ecosystems with minimal human interference is the key consideration.*** Suggested routes are unmarked and unmaintained, and still require a level of skill to find one's way. Motorized use by visitors is not permitted except for strictly controlled air access in remote areas.

The majority of the park is Zone II. Indeed, all areas of the park not otherwise identified as Zone I or Zone III shall be considered a Zone II designation.

Limited access by aircraft may be permitted on a case-by-case basis. Winter/spring access to Mount Barbeau and other glaciated areas was identified as an adventure ski opportunity which would be greatly simplified by air access. Due to seasonal changes, however, a specific landing location cannot be identified; these requests will be considered individually.

ZONE III: Natural Environment

Zone III areas provide opportunity for low-impact visitor experiences through ***outdoor recreation activities requiring minimal services and facilities of a rustic nature. While motorized access may be allowed, it will be controlled.*** These are the areas of the park with the greatest levels of access and activity.

Most of the park's infrastructure and major access points have been designated Zone III. The size of these zones has been modified somewhat from the previous plan to fit more closely with current use patterns and to simplify permitting. Controlled motorized use is permitted in these areas, but users, except for park operations, require a permit. Aircraft access is limited to businesses running commercial operations in the park.

In total, there are six Zone III sites in the park. Three of these areas are current Parks Canada operational sites, which includes Ward Hunt Island Camp, Tanquary Fiord Base of Operations, and Lake Hazen/Tasialuk Camp (see the Map 3 insets). For *all three sites*, Zone III encompasses the buildings and airstrips.

- **Ward Hunt Island (Map 3a):** Ward Hunt Island is not yet part of Quttinirpaaq National Park of Canada, although Parks Canada administers this land. Once the island is included within the land description of the park in the *Canada National Parks Act*, initiatives for the island will be implemented.
- **Tanquary Fiord Base of Operations (Map 3c):** The fiord itself, the shoreline around camp, and a small strip of shoreline north of the MacDonald River outflow is also Zone III to allow for small vessel landings. Private yacht access is permitted.
- **Lake Hazen/Tasialuk Camp (Map 3d):** The Zone III area was extended to allow planes to land on the lake when ice-covered, as this is a safer option in the spring. An additional Zone III extension over land is solely for the purpose of boring for materials to repair the airstrips, which should happen at a distance

from the lake that prohibits runoff (see also Map 4 and Section 7.0 regarding the Lake Hazen/Tasieluk Basin Management Area).

A newly designated Zone III area includes the northern entrance to **Discovery Harbour**, and the shoreline of a small bay and unmaintained airstrip immediately west of **Fort Conger (Map 3b)**. This change to Zone III allows for simplified permitting of aircraft landings, while also authorizing cruise ship zodiac landings on the beach.

Finally, two **Department of National Defense (DND) microwave towers and stations** are designated Zone III sites in order to facilitate DND access via helicopter, which is required frequently during the summer season for maintenance. Visitor access is not permitted (see Map 3).

DRAFT

7.0 Lake Hazen/Tasialuk Basin Management Area

Lake Hazen, or Tasialuk as it is known to many Inuit, is the deepest lake north of the Arctic Circle. The unique conditions of the lake's drainage basin, with a mountain range to the north and a plateau to the south, create a micro-climate that is warmer and thus more fertile than the surrounding polar desert. As a result, the Lake Hazen/Tasialuk Basin (Map 4) is considered a polar oasis, with meadows of lush grasses and marshes of flowers a stark contrast to the largely unproductive landscape found elsewhere in the High Arctic.

The Lake Hazen/Tasialuk Basin is nestled in a natural corridor between mountain and glacier along the route known as the Muskox Way, a migration corridor for Independence I people across northern Ellesmere to Greenland. The density of recorded archeological sites in this area demonstrates its importance to multiple groups of people spanning over 4,000 years, from Paleo-Inuit, to Thule, and to Greenlandic Inughuit cultures more recently. The biodiversity of the entire region has provided food and shelter for those who passed through, those who stayed, and those who came simply to harvest resources. The area has also been the subject of important scientific research documenting its sensitivity to climate change and the unprecedented changes to hydrology, nutrients, temperature, algae growth, ice cover and fish conditions over the past 300 years. For these reasons, the entire Lake Hazen/Tasialuk Basin was initially designated Zone I in the first management plan.

Shifting from Zone I to Zone II and taking an area management approach highlights the importance of maintaining a high level of protection for this very special naturally and culturally sensitive region, while encouraging continued research and small-scale visitation in a way that is consistent with Parks Canada zoning in other locations. For example, although visitation in the Lake Hazen/Tasialuk Basin has been low in the past few years, there are numerous hiking opportunities in the area, including a part of the Muskox Way. This change offers a chance to specifically consider the unique opportunities and challenges of this special place.

As discussed in the section above, the Lake Hazen/Tasialuk Camp is a small Zone III designation within the larger management area.

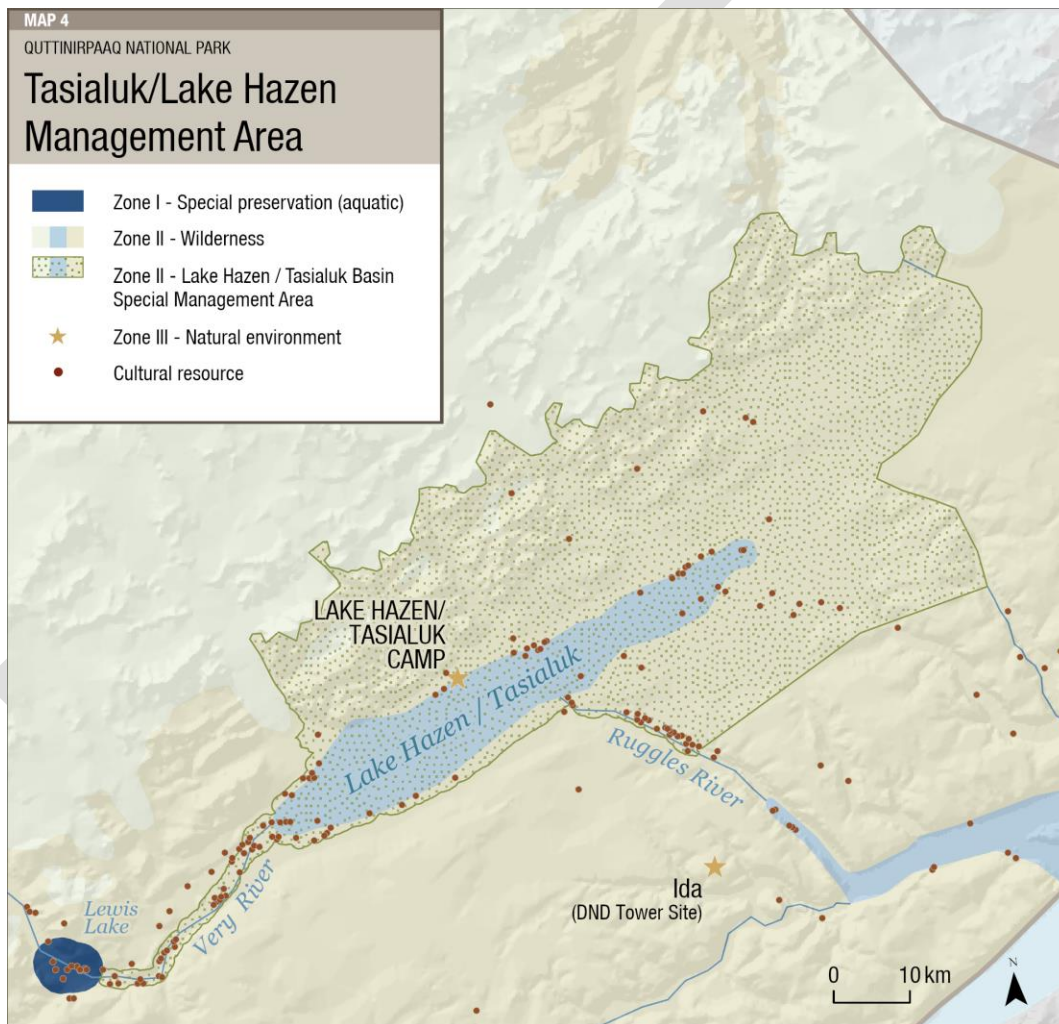
The following objectives have been defined to address the management issues in the Lake Hazen/Tasialuk Basin.

Objective 1: Use Inuit Qaujimagatuqangit and science to ensure human use does not negatively affect the ecological values of the area.

- An environmental code of conduct, developed with the JPMC, will guide use of the area, and be recommended for Inuit users as well.
- Knowledge gaps around ecological integrity are identified.
- Seek funding or partnerships for active management or monitoring as identified in the knowledge gap analysis.
- Re-zoning to Zone I for sites where evidence justifies.
- Analysis of operations at Lake Hazen/Tasialuk Camp ensures all activity is aligned with the long-term goal of ensuring the ecological integrity and protection of Lake Hazen/Tasialuk in light of the continued changes expected due to climate change.

Objective 2: To ensure that human use does not negatively affect cultural resources.

- All users of the Lake Hazen/Tasialuk Basin are provided detailed information regarding appropriate behaviour around archeological sites and asked to report specific locations of any feature found.
- Camping areas will be identified and promoted along the Very River in locations where there are no cultural resources.
- Promote known hiking routes away from identified archaeological sites.
- *Culturally sensitive areas* are considered when reviewing research and special activity requests.
- Confirm locations of cultural resources as opportunities allow.
- Re-zone specific areas to Zone I if assessment justifies this action.



Map 4: Tasialuk/Lake Hazen Management Area. The shift to Zone II offers a chance to specifically consider the challenges and opportunities of this special place. The Lake Hazen/Tasialuk Camp is a small Zone III area to facilitate base camp operations.

8.0 Summary of Strategic Environmental Assessment

In accordance with The Cabinet Directive on the Environmental Assessment of Policy, Plan and Program Proposals (2010), a strategic environmental assessment (SEA) is conducted on all management plans. The purpose of a SEA is to incorporate environmental considerations into the development of public policies, plans, and program proposals to support environmentally sound decision-making. Individual projects undertaken to implement management statement objectives at Quttinirpaaq National Park will be evaluated to determine if assessment is required under the *Nunavut Planning and Project Assessment Act*.

The scope of the SEA for this management plan included the area within the park boundary, with consideration also given to influences from stressors outside of the park. The time frame considered was ten years from the date of the plan, at which time the plan will be reviewed. Valued Components evaluated included the tundra (vegetation, active layer, Peary Caribou, Polar Bear, Porsild's Bryum) and freshwater (water quality, Arctic Char) ecosystems.

Valued Components were found to not be significantly at risk from cumulative effects, as the primary stressor to the park's natural environment is the changing global environment. The management plan includes approaches to understand impacts to these valued components including:

- a) Connecting with partners, stakeholders, and Inuit from the park's adjacent communities to promote and strengthen regional collaboration related to understanding impacts of the changing global environment on the park's natural systems, and
- b) Continuing the active involvement of Inuit in the management and operations of Quttinirpaaq.

Engagement with the public and Inuit was conducted on the plan, including a summary of the SEA, and results used to inform the SEA and management plan.

9.0 Acknowledgements

The preparation of this management plan involved many people. The input of this diverse group of individuals will result in a plan that will guide the management of the park for many years. The following individuals have made a special contribution and deserve mention:

Quttinirpaaq Park Planning Team

Liza Ningiuk
Larry Audlaluk
Warwick Vincent
Jennifer Lukacic
David Mablick
Jill Rajewicz

Quttinirpaaq Park Management Committee

Liza Ningiuk
David Gray
Tabitha Mullin
Annie Audlaluk
Rhoda Idlout
Bernard Maktar