

**SUBMISSION TO THE**  
**NUNAVUT WILDLIFE MANAGEMENT BOARD AND**  
**NUNAVIK MARINE REGION WILDLIFE BOARD**

**FOR**

**Information: X**

**Decision:**

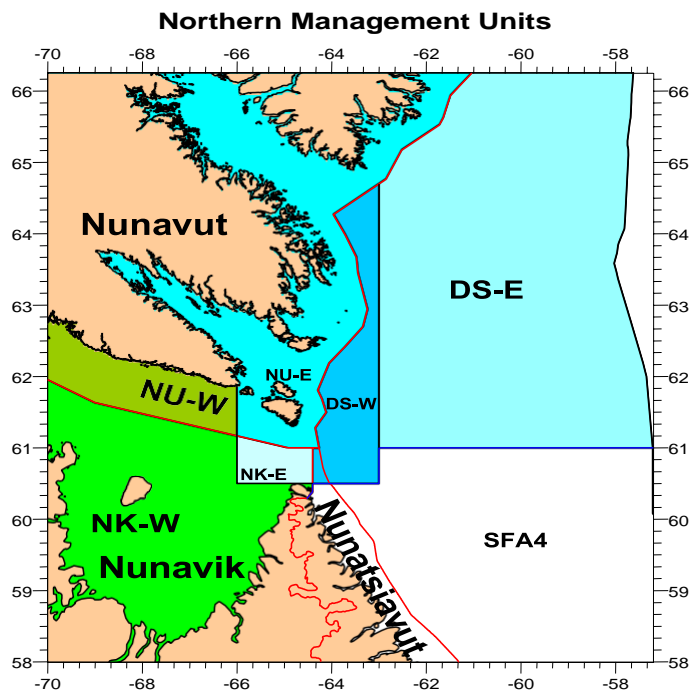
**Recommendation:**

**Issue: Total Allowable Catch levels for Northern (*Pandalus borealis*) and Striped (*Pandalus montagui*) Shrimp in the Western and Eastern Assessment Zones for the 2024-25 season**

**Map:**

Blue areas – Eastern Assessment Zone

Green areas – Western Assessment Zone



Northern shrimp (*Pandalus borealis*)



Striped shrimp (*Pandalus montagui*)

## **Background**

Two shrimp species (*P. borealis* and *P. montagui*) occur in the Northern shrimp fishery that takes place in the Davis Strait and eastern Hudson Strait. The Total Allowable Catch (TAC) for each species is set for two distinct stock assessment zones, the Western Assessment Zone (WAZ) and the Eastern Assessment Zone (EAZ) (see Map). The TAC is further distributed into management units within these zones.

The fishery in these areas operates April 1 – March 31. Harvesting activity typically commences in May to June, subject to ice conditions.

Where this fishery occurs within and adjacent to the Nunavut Settlement Area (NSA) and Nunavik Marine Region (NMR), decisions and recommendations on TAC and harvest levels for each species are requested annually from the Nunavut Wildlife Management Board (NWMB) and the Nunavik Marine Region Wildlife Board (NMRWB) (the Boards).

This briefing note is intended to mark upcoming decisions and recommendations that will be requested from the Boards for the 2024-25 fishing season.

DFO will provide the necessary and most recent science information to support Board decision making as soon as it becomes available to initiate a joint hearing process on this issue between the NWMB & NMRWB. A meeting of the Northern Shrimp Advisory Committee (NSAC) will occur on April 3, 2024 where stakeholders and Indigenous groups will discuss TAC options for both species in the WAZ and EAZ. A dedicated post-meeting for Indigenous interests will take place April 4, 2024. A consultation summary will be provided.

## **Science Advice**

Fisheries and Oceans Canada's (DFO) Science sector conducts full stock assessments of *P. borealis* and *P. montagui* on a two-year cycle with updates in interim years. A stock status update occurred February 6, 2024. Timing of the shrimp science survey, coupled with the time necessary to analyze the data and formalize the advice, does not allow for earlier availability. Peer-reviewed science advice was not available at the time of this submission and will be provided to the Boards for their consultations once the approved information is published.

## Summary of Request

A subsequent briefing note will be submitted to provide science information and a summary of consultations from the April 3-4 NSAC meeting. Recognizing that fishing begins in the WAZ and EAZ as early as May, decisions and recommendations on the following matters will be requested as soon as possible:

### **Western Assessment Zone:**

1. Decisions on harvest levels for *P. borealis* and *P. montagui* in the NU W (within the NSA) and NK W (within the NMR) management units, respectively.
2. Recommendations on the overall TAC for *P. borealis* and *P. montagui* in the WAZ.

### **Eastern Assessment Zone:**

1. Decisions on harvest levels for *P. borealis* and *P. montagui* in the NU E (within the NSA) and NK E (within the NMR) management units, respectively.
2. Recommendations on the distribution and allocation of the TAC for *P. borealis* within the Davis Strait management units (DS W, DS E).
3. Recommendations on the overall TAC for *P. borealis* and *P. montagui* in the EAZ, respectively.

**Table 1. Summary of requested decisions and recommendations, WAZ.**

<b>Area (Management Unit)</b>	<b><i>P. borealis</i></b>	<b><i>P. montagui</i></b>
<b>NSA (NU W)</b>	Harvest level decision NWMB	Harvest level decision NWMB
<b>NMR (NK W)</b>	Harvest level decision NMRWB	Harvest level decision NMRWB
<b><i>TOTAL (WAZ)</i></b>	<i>TAC recommendation (combined total of decisions) NWMB and NMRWB</i>	<i>TAC recommendation (combined total of decisions) NWMB and NMRWB</i>

**Table 2. Summary of requested decisions and recommendations, EAZ.**

<b>Area (Management Unit)</b>	<b><i>P. borealis</i></b>	<b><i>P. montagui</i></b>
<b>NSA (NU E)</b>	Harvest level decision NWMB	Harvest level decision NWMB
<b>NMR (NK E)</b>	Harvest level decision NMRWB	Harvest level decision NMRWB
<b>DS E</b>	TAC distribution and allocation recommendation NWMB	<i>*Not applicable bycatch</i>
<b>DS W</b>	TAC distribution and allocation recommendation NWMB & NMRWB	
<b><i>TOTAL (EAZ)</i></b>	<i>TAC Recommendation NWMB &amp; NMRWB</i>	<i>TAC Recommendation NWMB &amp; NMRWB</i>

**Prepared by:** Fisheries Resource Management, Fisheries and Oceans Canada

**Date:** February 19, 2024