

ᐱᑦᑎᑦᑎᑦᑎᑦ 1. *Pandalus borealis* ᐃᑭᑦᑎᑦᑎᑦ ᐱᑦᑎᑦᑎᑦᑎᑦ ᐱᑦᑎᑦᑎᑦᑎᑦ (ᑭᑦᑎᑦᑎᑦᑎᑦ 24, 2024) ᐱᑦᑎᑦᑎᑦᑎᑦ ᐱᑦᑎᑦᑎᑦᑎᑦ (TAC), (B; ᐱᑦᑎᑦᑎᑦᑎᑦ) ᐱᑦᑎᑦᑎᑦᑎᑦ ᐱᑦᑎᑦᑎᑦᑎᑦ (SSB) ᐱᑦᑎᑦᑎᑦᑎᑦ ᐱᑦᑎᑦᑎᑦᑎᑦ (LRP; 15,800 ᐱᑦᑎᑦᑎᑦᑎᑦ) ᐱᑦᑎᑦᑎᑦᑎᑦ (ᐱᑦᑎᑦᑎᑦᑎᑦ) ᐱᑦᑎᑦᑎᑦᑎᑦ ᐱᑦᑎᑦᑎᑦᑎᑦ (USR; 31,600 ᐱᑦᑎᑦᑎᑦᑎᑦ), (C; ᐱᑦᑎᑦᑎᑦᑎᑦ) ᐱᑦᑎᑦᑎᑦᑎᑦ ᐱᑦᑎᑦᑎᑦᑎᑦ, (D; ᐱᑦᑎᑦᑎᑦᑎᑦ) ᐱᑦᑎᑦᑎᑦᑎᑦ.





















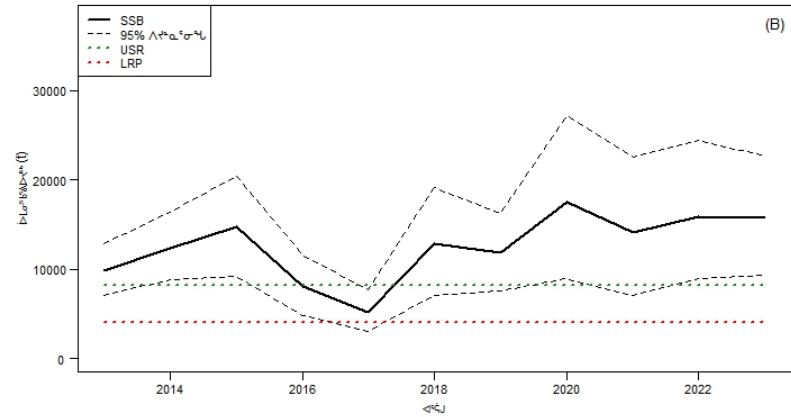
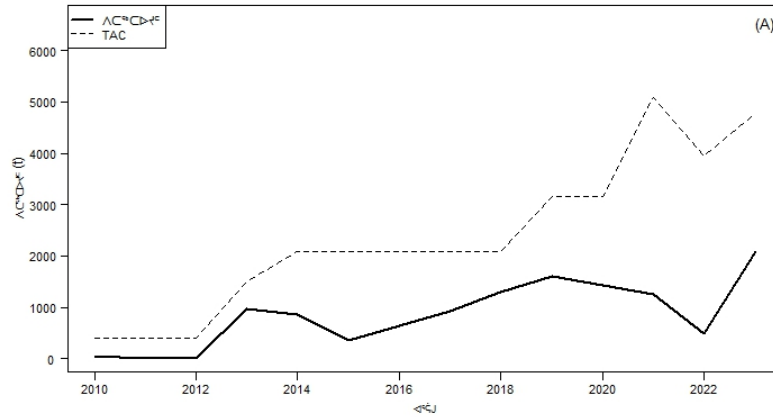












ጥንቃቄ 1. *Pandalus borealis* ስርዓት ስርዓት ስርዓት ስርዓት (A); ስርዓት ስርዓት ስርዓት ስርዓት (B); ስርዓት ስርዓት ስርዓት ስርዓት (C); ስርዓት ስርዓት ስርዓት ስርዓት (D)















### የሥራ ማድረግ ይረዳል

ስም	የሥራ ማድረግ ይረዳል
Sheila Atchison (አካል ማድረግ)	የሥራ ማድረግ ይረዳል ለሥራ ማድረግ ይረዳል
Samantha Fulton ((የሥራ ማድረግ ይረዳል ለሥራ ማድረግ ይረዳል))	የሥራ ማድረግ ይረዳል ለሥራ ማድረግ ይረዳል
Wojciech Walkusz	የሥራ ማድረግ ይረዳል ለሥራ ማድረግ ይረዳል
Daniel Enright	የሥራ ማድረግ ይረዳል ለሥራ ማድረግ ይረዳል
Krista Baker	የሥራ ማድረግ ይረዳል ለሥራ ማድረግ ይረዳል
William Coffey	የሥራ ማድረግ ይረዳል ለሥራ ማድረግ ይረዳል
Nicholas Le Corre	የሥራ ማድረግ ይረዳል ለሥራ ማድረግ ይረዳል
Susan Thompson	የሥራ ማድረግ ይረዳል ለሥራ ማድረግ ይረዳል
Nicholas Duprey	የሥራ ማድረግ ይረዳል ለሥራ ማድረግ ይረዳል
Jeff Adam	የሥራ ማድረግ ይረዳል ለሥራ ማድረግ ይረዳል
Courtney D'Aoust (በሥራ ማድረግ ይረዳል ለሥራ ማድረግ ይረዳል)	የሥራ ማድረግ ይረዳል ለሥራ ማድረግ ይረዳል
Dirk Algera	የሥራ ማድረግ ይረዳል ለሥራ ማድረግ ይረዳል
Chantelle Sawatzky	የሥራ ማድረግ ይረዳል ለሥራ ማድረግ ይረዳል
Kayla Gagliardi (በሥራ ማድረግ ይረዳል ለሥራ ማድረግ ይረዳል)	የሥራ ማድረግ ይረዳል ለሥራ ማድረግ ይረዳል
Joclyn Paulic (በሥራ ማድረግ ይረዳል ለሥራ ማድረግ ይረዳል)	የሥራ ማድረግ ይረዳል ለሥራ ማድረግ ይረዳል
Julie Marentette (የሥራ ማድረግ ይረዳል ለሥራ ማድረግ ይረዳል)	የሥራ ማድረግ ይረዳል ለሥራ ማድረግ ይረዳል

ᐅᓐᓂᓐ ᐅᓐᓂᓐᓂᓐᓂᓐᓂᓐᓂᓐ

DFO. 2007. [Assessment Framework for Northern Shrimp \(\*Pandalus borealis\*\) off Labrador and the northeastern coast of Newfoundland; 28-30 May 2007](#). DFO Can. Sci. Advis. Sec. Proceed. Ser. 2007/034.

DFO. 2020. [Science Advice on Limit Reference Points for Northern Shrimp \(\*Pandalus borealis\*\) and Striped Shrimp \(\*Pandalus montagui\*\) in the Eastern and Western Assessment Zones](#). DFO Can. Sci. Advis. Sec. Sci. Advis. Rep. 2020/053.

DFO. 2022. [Update of stock status indicators for Northern Shrimp, \*Pandalus borealis\*, and Striped Shrimp, \*Pandalus montagui\*, in the Western and Eastern Assessment Zones, January 2022](#). DFO Can. Sci. Advis. Sec. Sci. Resp. 2022/013. (Erratum: February 2022).

DFO. 2023. [Assessment of Northern Shrimp \(\*Pandalus borealis\*\) and Striped Shrimp \(\*Pandalus montagui\*\) in the Eastern and Western Assessment Zones, February 2023](#). DFO Can. Sci. Advis. Sec. Sci. Advis. Rep. 2023/013.

Fulton, S., Walkusz, W., Atchison, S., and Cyr, F. 2024. Information to support the assessment of Northern Shrimp, *Pandalus borealis*, and Striped Shrimp, *Pandalus montagui*, in the Eastern and Western Assessment Zones, February 2023. DFO Can. Sci. Advis. Sec. Res. Doc. 2024/016. Iv + 51 p.

Le Corre, N., Pepin, P., Burmeister, A., Walkusz, W., Skanes, K., Wang, Z., Brickman, D., and Snelgrove, P.V.R. 2020. Larval connectivity of northern shrimp (*Pandalus borealis*) in the Northwest Atlantic. Can. J. Fish. Aquat. Sci. 77(8): 13321347.







ᐃᑦᐱᑦᐱ 4

ᐅᐱᑦᐱᑦ ᐱᑦᐱᑦᐱᑦ/ᐱᑦᐱᑦ	ᐱᐱᑦᐱᑦ ᐱᑦᐱᑦᐱᑦᐱᑦᐱᑦ ᐱᑦᐱᑦᐱᑦᐱᑦᐱᑦ	2020/2021 ᐱᑦᐱᑦᐱᑦᐱᑦᐱᑦ ᐱᑦᐱᑦᐱᑦᐱᑦᐱᑦ	2021/2022 ᐱᑦᐱᑦᐱᑦᐱᑦᐱᑦ ᐱᑦᐱᑦᐱᑦᐱᑦᐱᑦ	2022/2023 ᐱᑦᐱᑦᐱᑦᐱᑦᐱᑦ ᐱᑦᐱᑦᐱᑦᐱᑦᐱᑦ	2023/2024 ᐱᑦᐱᑦᐱᑦᐱᑦᐱᑦ ᐱᑦᐱᑦᐱᑦᐱᑦᐱᑦ
<i>P. borealis</i>	ᐱᑦᐱᑦᐱᑦᐱᑦᐱᑦ ᐱᑦᐱᑦᐱᑦᐱᑦᐱᑦ	5,250	5,250	4,884	3,360
	ᐱᑦᐱᑦᐱᑦᐱᑦᐱᑦ ᐱᑦᐱᑦᐱᑦᐱᑦᐱᑦ	1,000	1,150	1,008	693
	ᐱᑦᐱᑦᐱᑦᐱᑦᐱᑦ ᐱᑦᐱᑦᐱᑦᐱᑦᐱᑦ	1,604	1,845	1,616	1,112
	ᐱᑦᐱᑦᐱᑦᐱᑦᐱᑦ ᐱᑦᐱᑦᐱᑦᐱᑦᐱᑦ	1,778	2,753	2,155	1,483
	ᐱᑦᐱᑦᐱᑦᐱᑦᐱᑦ ᐱᑦᐱᑦᐱᑦᐱᑦᐱᑦ	197	305	239	165
	ᐱᑦᐱᑦᐱᑦᐱᑦᐱᑦᐱᑦ	659	758	664	456
	ᐱᑦᐱᑦᐱᑦᐱᑦᐱᑦᐱᑦ	165	190	166	114
	<b>ᐱᑦᐱᑦᐱᑦ</b>	<b>10,653</b>	<b>12,251</b>	<b>10,732</b>	<b>7,383</b>
<i>P. montagui</i>	ᐱᑦᐱᑦᐱᑦᐱᑦᐱᑦᐱᑦ	301	346	574	820
	ᐱᑦᐱᑦᐱᑦᐱᑦᐱᑦᐱᑦ	129	148	252	360
	ᐱᑦᐱᑦᐱᑦᐱᑦᐱᑦᐱᑦ ᐱᑦᐱᑦᐱᑦᐱᑦᐱᑦᐱᑦᐱᑦ (ᐱᑦᐱᑦᐱᑦᐱᑦᐱᑦᐱᑦᐱᑦ)	410	471.5	574	920
	<b>ᐱᑦᐱᑦᐱᑦ</b>	<b>840</b>	<b>965.5</b>	<b>1,400</b>	<b>2,100</b>
<i>P. borealis</i>	ᐱᑦᐱᑦᐱᑦᐱᑦᐱᑦᐱᑦ	1,582	2,545	1,976	2,394
	ᐱᑦᐱᑦᐱᑦᐱᑦᐱᑦᐱᑦ	1,582	2,545	1,976	2,394
	<b>ᐱᑦᐱᑦᐱᑦ</b>	<b>3,163</b>	<b>5,090</b>	<b>3,958</b>	<b>4,788</b>
<i>P. montagui</i>	ᐱᑦᐱᑦᐱᑦᐱᑦᐱᑦᐱᑦ	5,988	4,735	6,048	8,641
	ᐱᑦᐱᑦᐱᑦᐱᑦᐱᑦᐱᑦ	5,988	4,735	6,048	8,641
	<b>ᐱᑦᐱᑦᐱᑦ</b>	<b>11,975</b>	<b>9,470</b>	<b>12,096</b>	<b>17,282</b>











