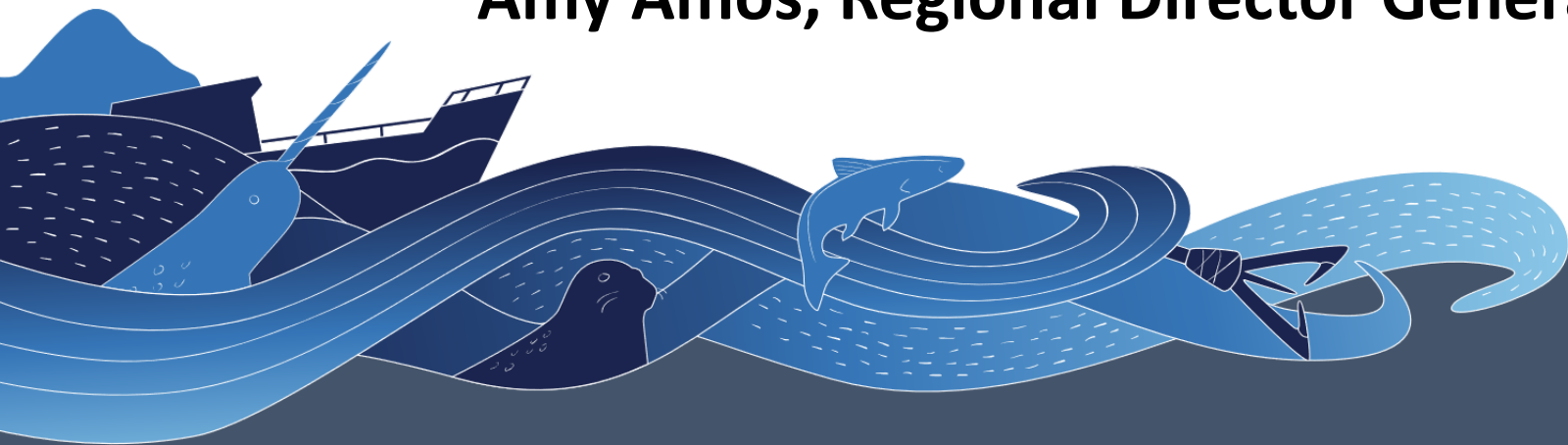
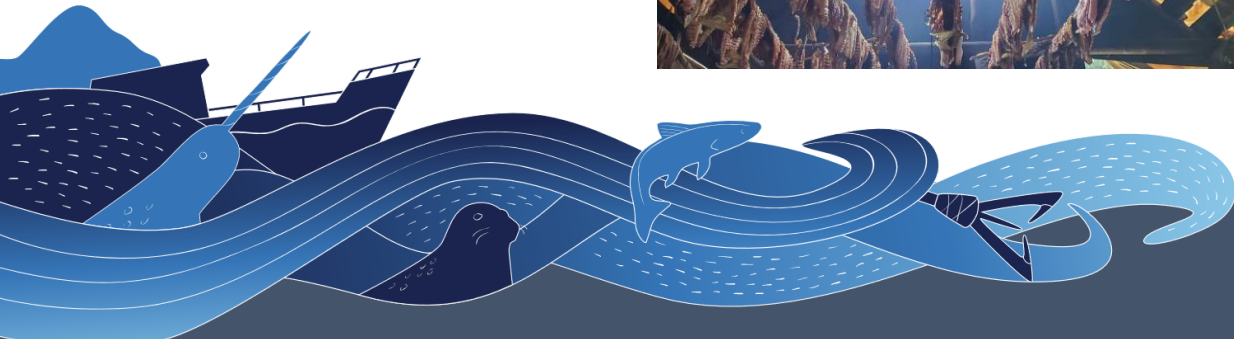
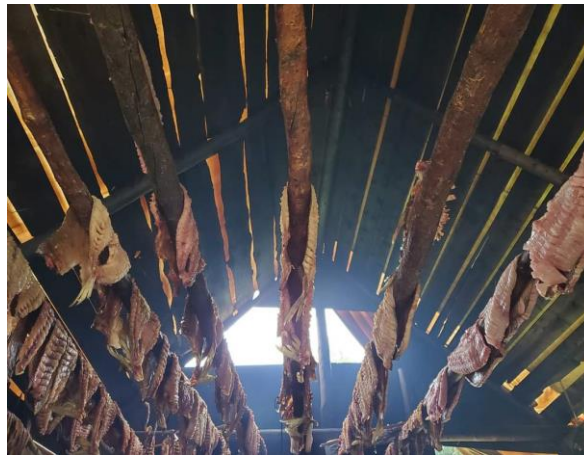
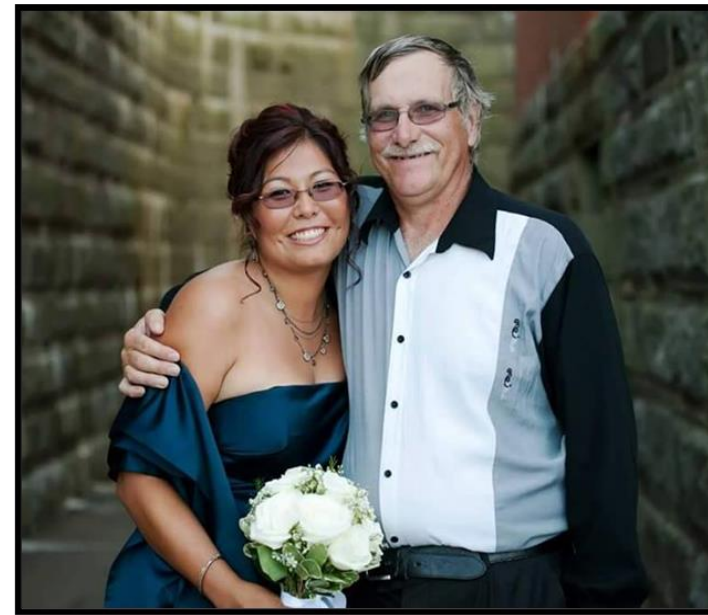


Fisheries and Oceans Canada (DFO) Arctic Region

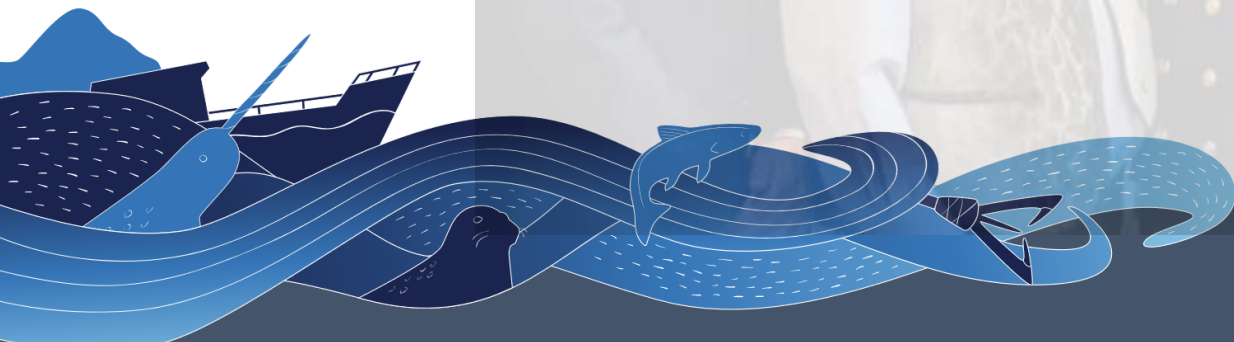
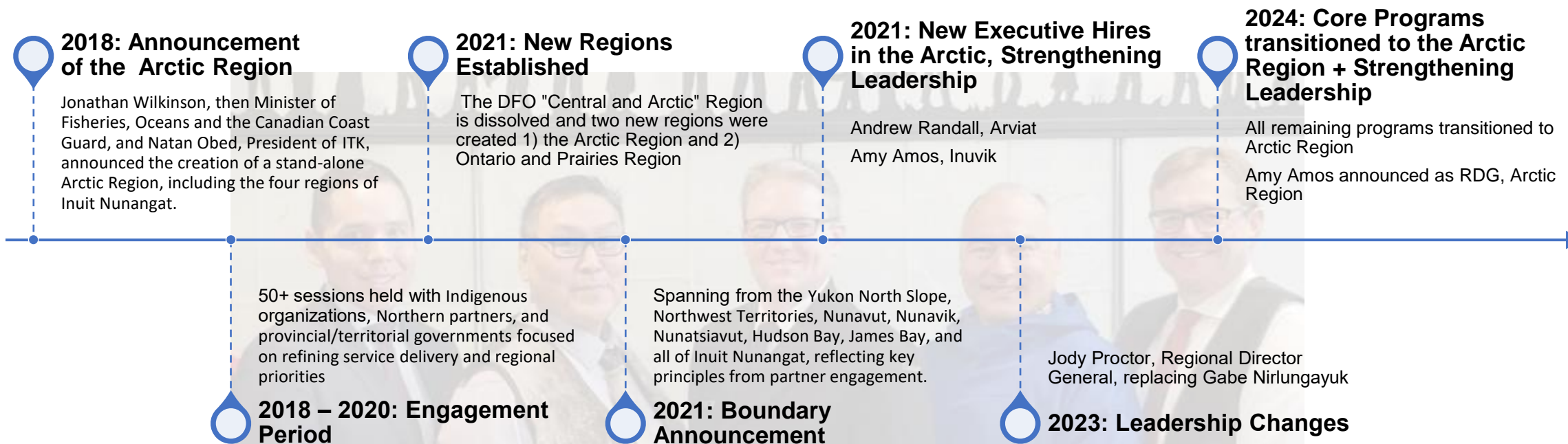
**Nunavut Wildlife Management Board (NWMB) Regular Meeting
November 5, 2025
Amy Amos, Regional Director General Arctic Region**



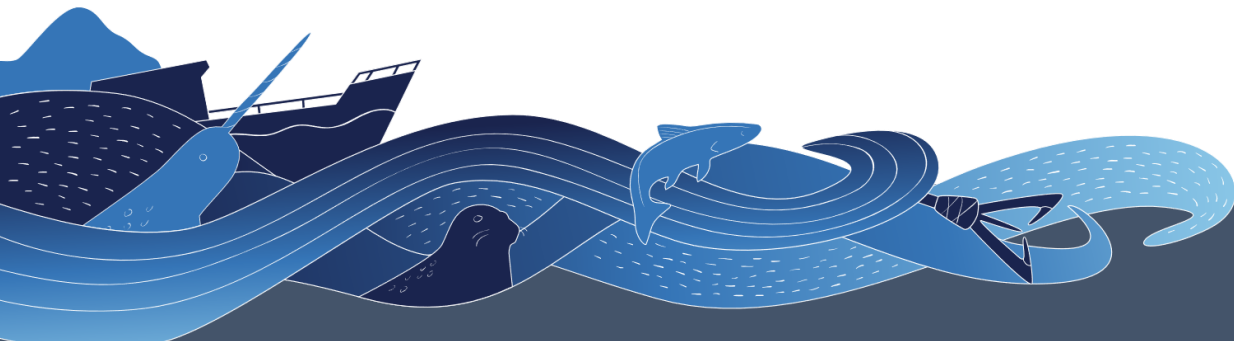
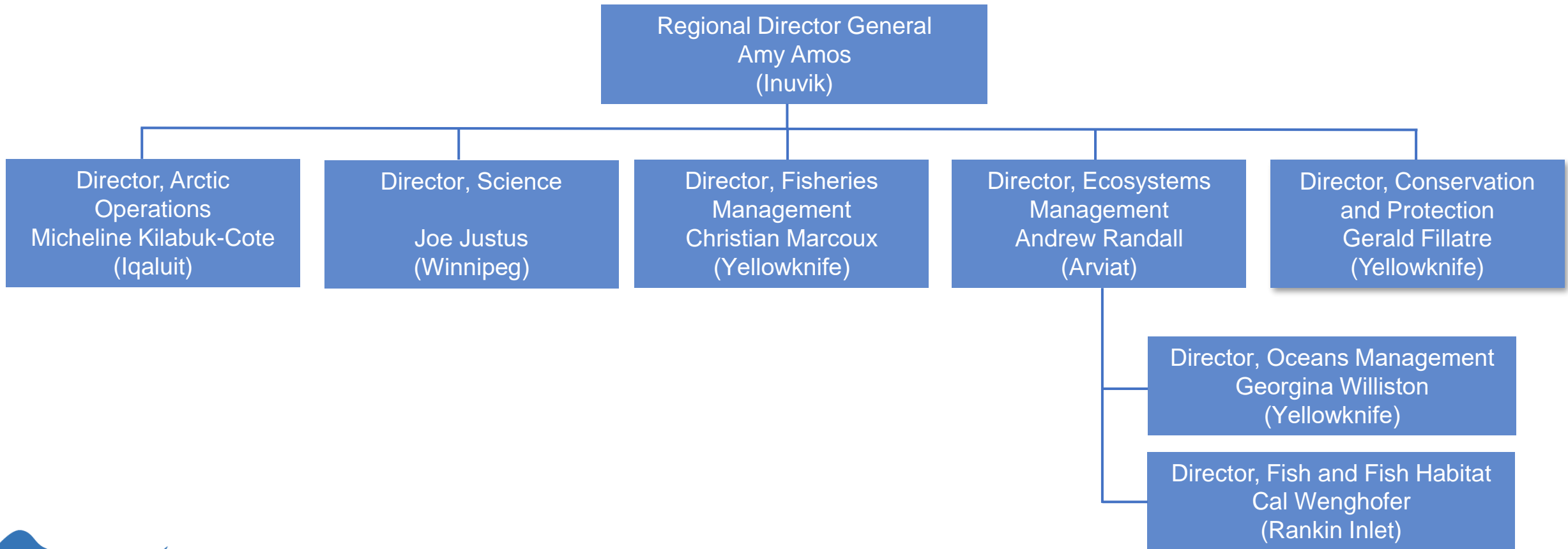
Introduction



The Creation of Arctic Region: Background

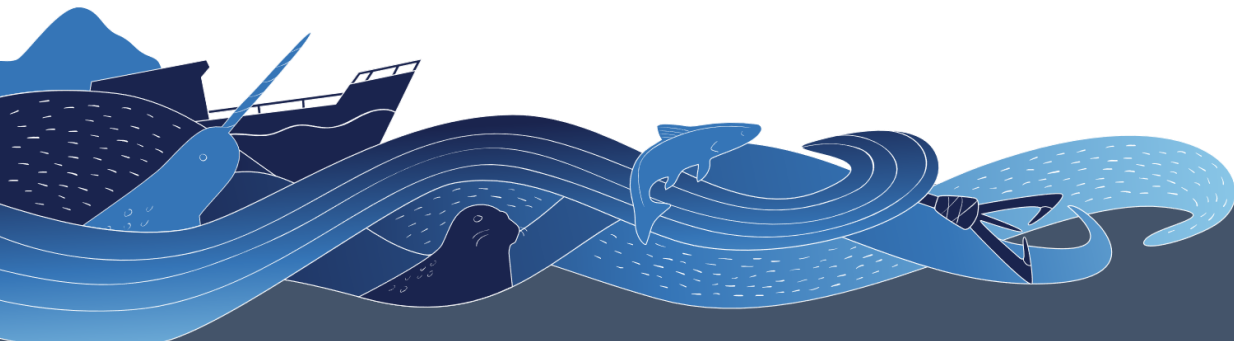


Arctic Region – Senior Executive Structure



Overview of Arctic Region Employment Implementation of Nunavut Agreement Article 23

- In 2023, 17 positions were encumbered by Nunavut Inuit. As of March 2025, 24 positions are encumbered by Nunavut Inuit, which represents a 9% increase (encumbered positions only).
- In the 2023-2033 Inuit Employment Plan, DFO-CCG committed in its short-term goal (by March 2026) to increase its percentage of Inuit in encumbered position to 40%.
- As of March 2025, DFO-CCG currently stands at 42%.



Projects supported using Nunavut Implementation Funds in 2025/26

Age Validation study of Arctic Char in Cambridge Bay

Developing the Inshore Greenland Halibut Fishery

Cumberland Sound Turbot Management Area Fish Plan Sampling

Fisheries Research of key Cumberland sound Arctic Char stocks

Monitoring Interactions of subarctic whale species with Baffin Bay Fisheries

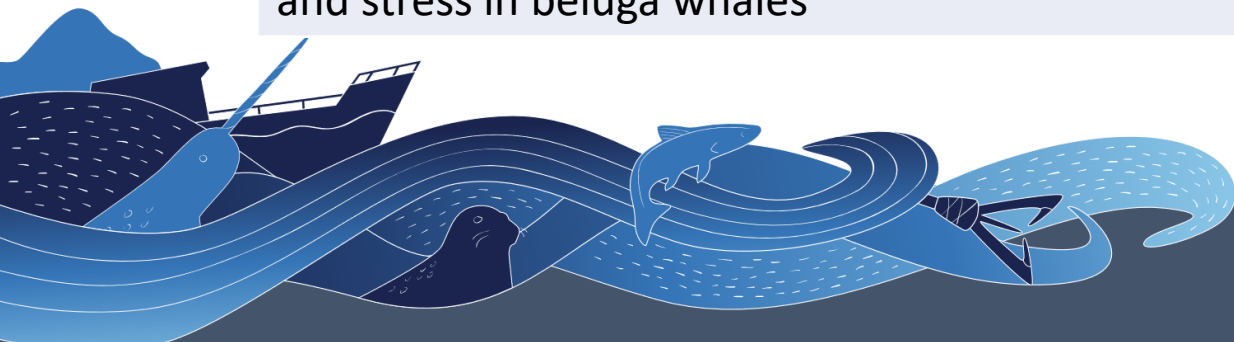
Collaborative Fieldwork to advance ECWG Bowhead Whale population using genetics and drone imagery

Monitoring of key Arctic Char stocks near Qikiqtarjuaq using community-based monitoring

Narwhal and Beluga Tagging, biopsy, and drone work in Admiralty Inlet, Foxe Basin, and Hudson Strait

Community Based Assessment of Walrus Vulnerability to disturbance

Determining of epigenetic and chronological aging methods correlate with environmental change and stress in beluga whales



Our continued collaboration is key to our shared objectives

Thank you for your time

Mársı | Kinanāskomitin | Thank you | Merci | Haḷ' | Mutna | Quana |
Qujannamiik | Nakurmiik | Quyanainni | Máhsı | Máhsı | Mahsı |
Gunalchéesh | Kwänäschis | Máhsin cho | Tsin'jj choh | Sógá sénlá'
| Quanaqqutit | ᐱᐅᐅᐅ

